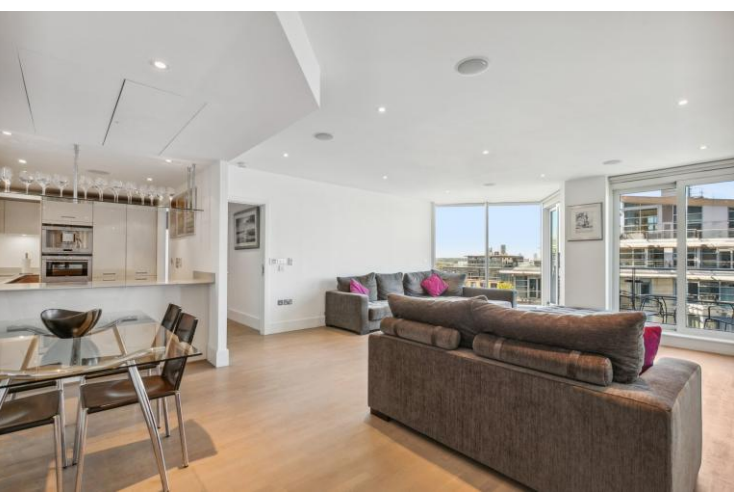




Ensign House
Juniper Drive, SW18

CHESTERTONS





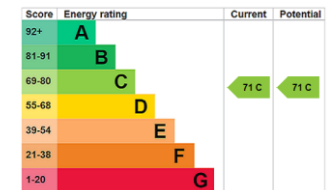
Spacious three-bedroom apartment situated on the eleventh floor of a sought-after riverside development in SW18, benefiting from two private balconies and far-reaching river views.

The property offers bright and well-proportioned space throughout, centred around a generous reception room with floor to ceiling windows and ample space for both living and dining. There is also direct access to a private balcony. A separate kitchen sits adjacent to the reception room and is complemented by a useful utility area. There are three bedrooms, including a generous principal bedroom with built in storage and an ensuite. The flat also benefits from an additional family bathroom, balcony and excellent storage space.

Ensign House forms part of the popular Riverside West development, which benefits from a 24-hour concierge, on-site amenities and attractive riverside surroundings. The property is ideally located for the shops, cafés and restaurants of Wandsworth Town, with Southside Shopping Centre nearby and excellent transport links via Wandsworth Town station.

- 3 Double Bedrooms
- 2 Bathrooms
- 2 Balconies with River Views
- Underground Private Parking
- Concierge
- Onsite Residents Gym

Asking Price £1,000,000



Tenure: Leasehold 977 years 3 months
Service Charge: TBC
Ground Rent: TBC
Local Authority: Wandsworth Council
Council Tax Band: H

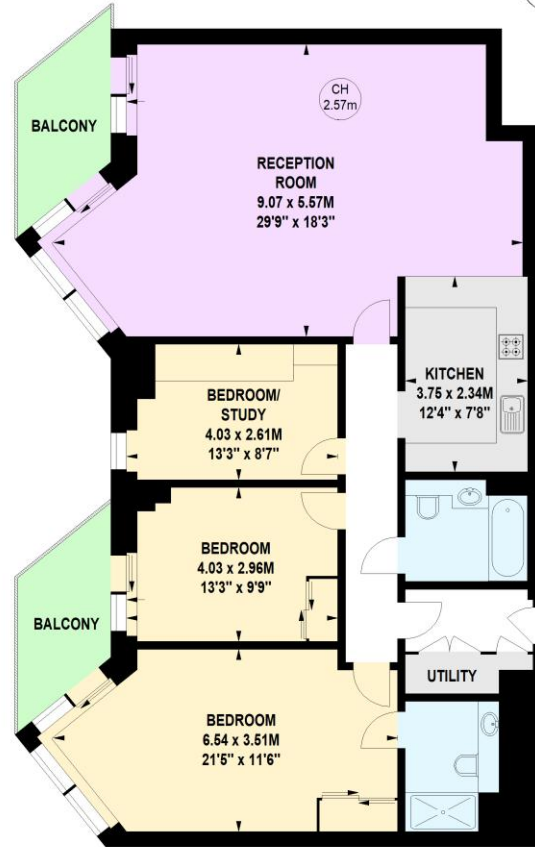
Chestertons Battersea Park & Nine Elms Sales

62-64 Battersea Bridge Road
 London
 SW11 3AG
 batterseapark@chestertons.co.uk
 0203 040 8700
 chestertons.co.uk

Ensign House, SW18

Key :
CH - Ceiling Height

Approximate gross internal area
116.13 sq m / 1250 sq ft



Eleventh Floor

Not to scale, for guidance only and must not be relied upon as a statement of fact.
All measurements and areas are approximate only

Chesterton UK Services Limited trading as Chestertons for themselves and for the vendor of this property whose agents they are, give notice that (i) these particulars do not constitute any part of an offer or contract, (ii) all statements contained within these particulars are made without responsibility on the part of Chestertons or the vendor, (iii) whilst made in good faith, none of the statements contained within these particulars are to be relied upon as a statement or representation of fact, (iv) any intending purchasers must satisfy themselves by inspection or otherwise as to the correctness of each of the statements contained within these particulars, (v) the vendor does not make or give either Chestertons or any person in their employment any authority to make or give representation or warranty whatsoever in relation to this property. Wide angle lenses may be used. ©Copyright Chestertons | Chesterton UK Services Limited | Registered Office 5th Floor, The Lantern, 75 Hampstead Road, London, NW1 2PL Registered Company Number 05334580.



This paper is
100% recyclable