



11 Arosa Drive, Birmingham

£155,000 Leasehold

Hadleigh Estate Agents are delighted to offer this excellent first floor two bedroom apartment for sale. Located within the ever popular Arosa Drive, the property is offered with no upward chain and further benefits from garage en-bloc.

The property briefly comprises of modern fitted kitchen, spacious lounge and dining room, two double bedrooms and bathroom.





Location

Arosa Drive is a quiet and well-presented residential development featuring mature lawned areas and easy access to picturesque walks along Bourn Brook. Ideally located on the outskirts of Harborne, the property is close to the Queen Elizabeth Hospital, the University of Birmingham, and within walking distance of local shops and transport links to Birmingham City Centre and Harborne High Street.

Entrance Hallway

Accessed through the front door, the hallway provides entry to all rooms and includes three useful storage cupboards.

Lounge

A good-sized reception room with dual aspect windows. Includes a ceiling light point, gas central-heated radiator and power points.

Kitchen

Featuring a window to the rear elevation, a range of wall and base units, an additional storage cupboard housing the boiler, ceiling light point, plumbing for utilities and power points.





Master Bedroom

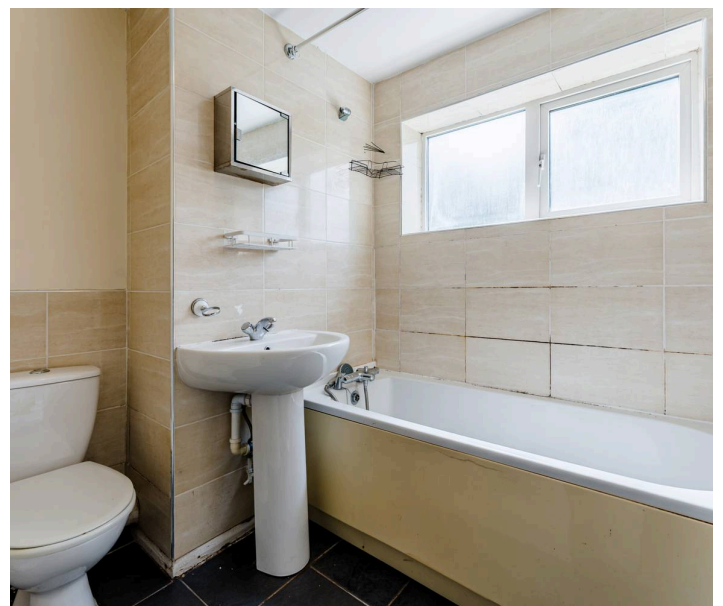
A double bedroom facing the rear elevation, with a gas central-heated radiator, power points and ceiling light point.

Bedroom Two

A second well-proportioned bedroom located to the front elevation, with ceiling light point, gas central-heated radiator and power points.

Bathroom

Partially tiled bathroom suite, with fitted bath and shower over. Low level flush WC, hand wash basin and towel radiator. Frosted glass window, ceiling light point and tiled flooring.



Council Tax band: B

Tenure: Leasehold

Years remaining: 938

Service Charge PA: £1,206.10

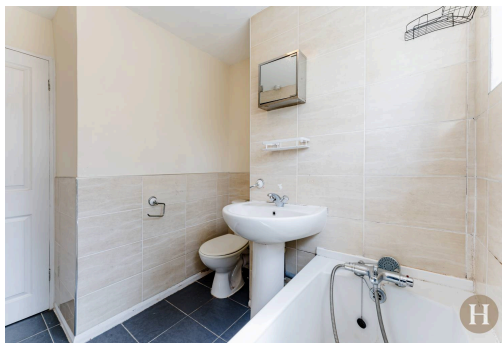
Ground Rent PA: £0

EPC Energy Efficiency Rating: C

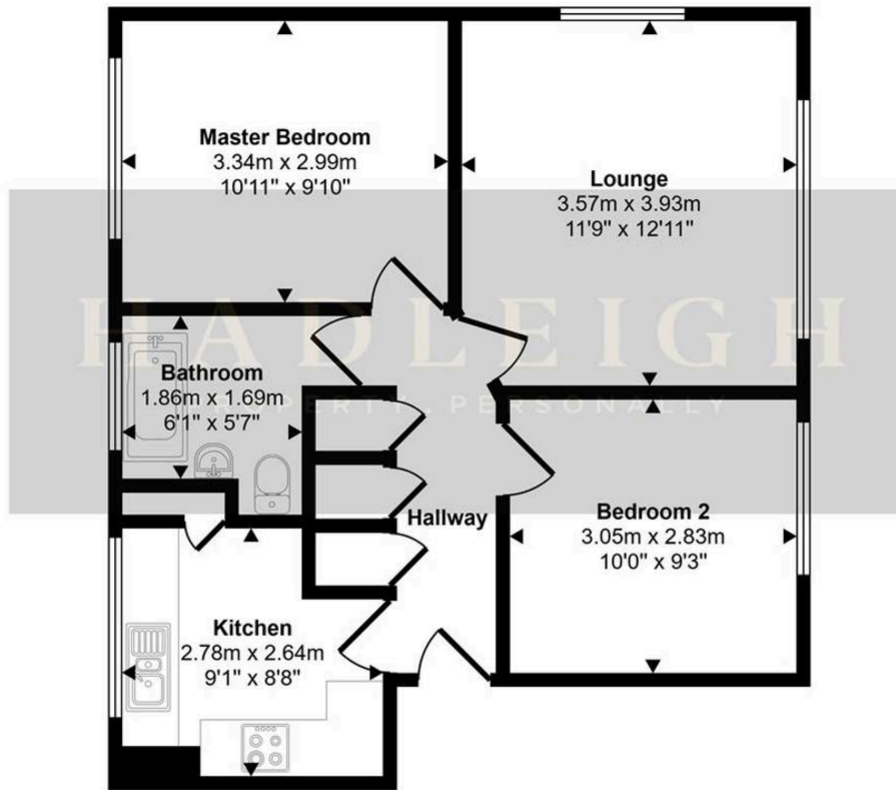
EPC Environmental Impact Rating: C



- › First floor two bedroom apartment
- › Spacious lounge/diner
- › Two double bedrooms & bathroom
- › No upward chain
- › Garage en-bloc



Approx Gross Internal Area
52 sq m / 562 sq ft



Floorplan

This floorplan is only for illustrative purposes and is not to scale. Measurements of rooms, doors, windows, and any items are approximate and no responsibility is taken for any error, omission or mis-statement. Icons of items such as bathroom suites are representations only and may not look like the real items. Made with Made Snappy 360.