



3 BROWNLEY ROAD MANSFIELD

£800 PCM

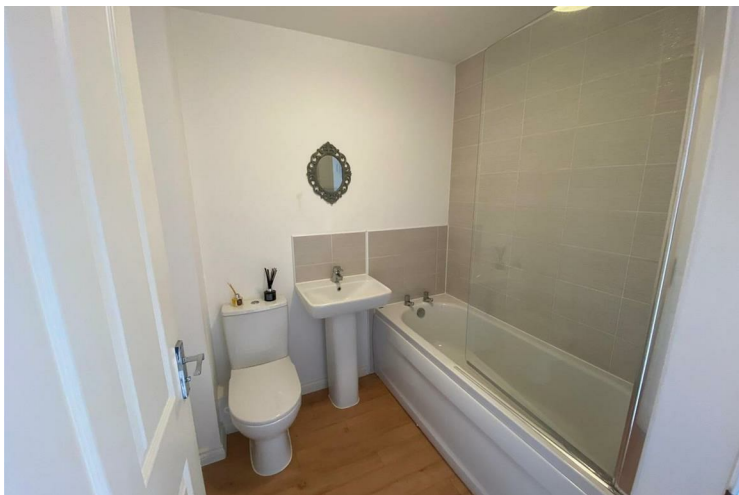
A modern 2 bedroom town house located on a popular modern development on the edge of Sherwood Forest.

The house consists of:

- Entrance door, into lounge. (4.01m x 3.72m)
- Downstairs WC. (1.46m x 1.17m)



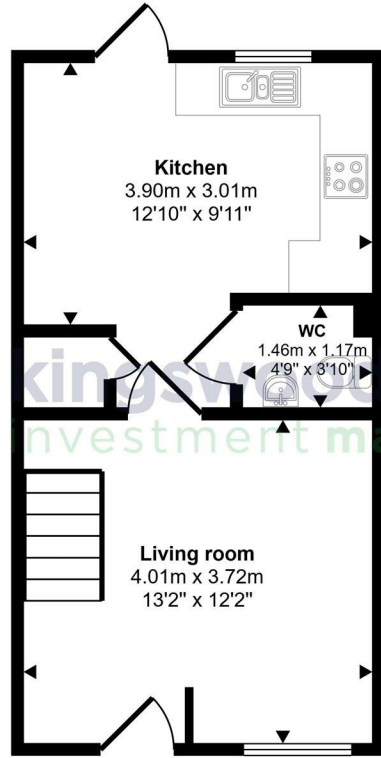
- Modern throughout • Popular modern estate • 2 double bedrooms • Kitchen includes washer and dishwasher



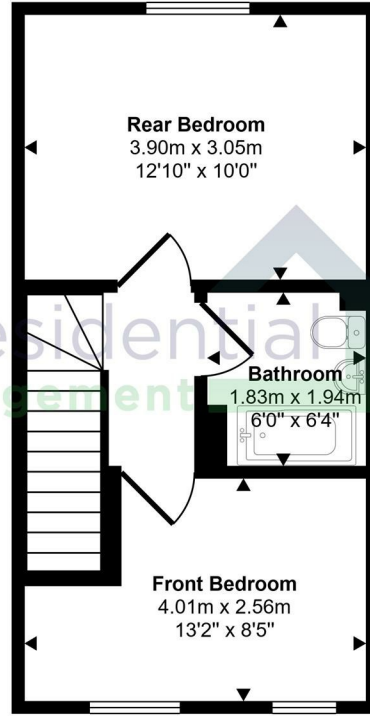
- Bathroom with shower over bath • Downstairs WC • Driveway parking to front • Enclosed rear garden • COOP store and other amenities on the development



Approx Gross Internal Area
62 sq m / 668 sq ft



Ground Floor
Approx 31 sq m / 334 sq ft



First Floor
Approx 31 sq m / 334 sq ft

This floorplan is only for illustrative purposes and is not to scale. Measurements of rooms, doors, windows, and any items are approximate and no responsibility is taken for any error, omission or mis-statement. Icons of items such as bathroom suites are representations only and may not look like the real items. Made with Made Snappy 360.



Energy Efficiency Rating		
	Current	Potential
Very energy efficient - lower running costs		
(92 plus) A		97
(81-91) B	84	
(69-80) C		
(55-68) D		
(39-54) E		
(21-38) F		
(1-20) G		
Not energy efficient - higher running costs		
England & Wales		EU Directive 2002/91/EC

EPC Rating: B Council Tax Band: A

Agents Note: Whilst every care has been taken to prepare these particulars, they are for guidance purposes only. All measurements are approximate and are for general guidance purposes only and whilst every care has been taken to ensure their accuracy, they should not be relied upon and potential buyers/tenants are advised to recheck the measurements

Nottinghamshire
1 East Circus Street
Nottingham
NG1 5AF

01157043163
enquiries@kingswoodrim.co.uk
www.kingswoodrim.co.uk

