



## Parkland Walk, SW6

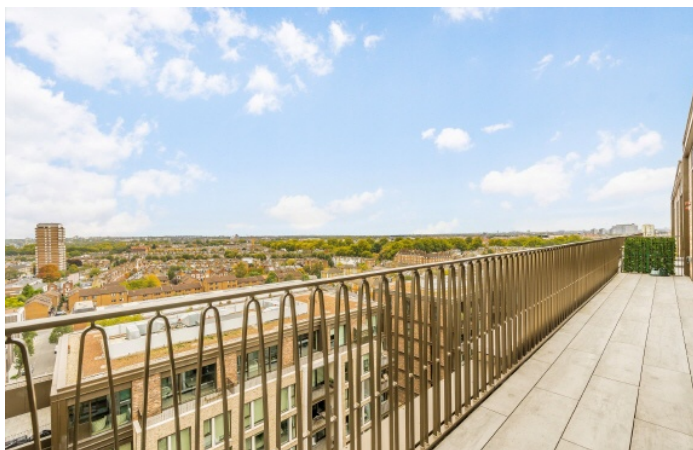
£2,000,000

An exceptional and newly-built three bedroom Penthouse with far reaching views situated on the Tenth floor of one of London's opulent new developments in King's Road Park by St Williams Homes, Berkeley Group.

Ideally located within the sought-after King's Road Park development, Saxon House enjoys a prime position near King's Road, Chelsea Harbour and Imperial Wharf. Residents are moments from the world-famous King's Road, offering an exceptional array of fashion, dining and entertainment, as well as superb transport connections from Imperial Wharf and Fulham Broadway stations.

### Features

- Three Double Bedrooms
- Top Floor Lateral Penthouse
- Two Private Balconies
- Chain Free
- 24/7 Concierge
- Array of On Site Facilities



## Parkland Walk, SW6

This stunning residence offers over 1,500 sq ft of beautifully designed internal space, complemented by more than 350 sq ft of private terrace area. The bright and spacious reception and dining room features floor-to-ceiling windows and glass sliding doors that open onto a south-facing terrace, flooding the space with natural light. The fully fitted, integrated kitchen is equipped with premium Miele appliances, seamlessly combining contemporary style with exceptional functionality.

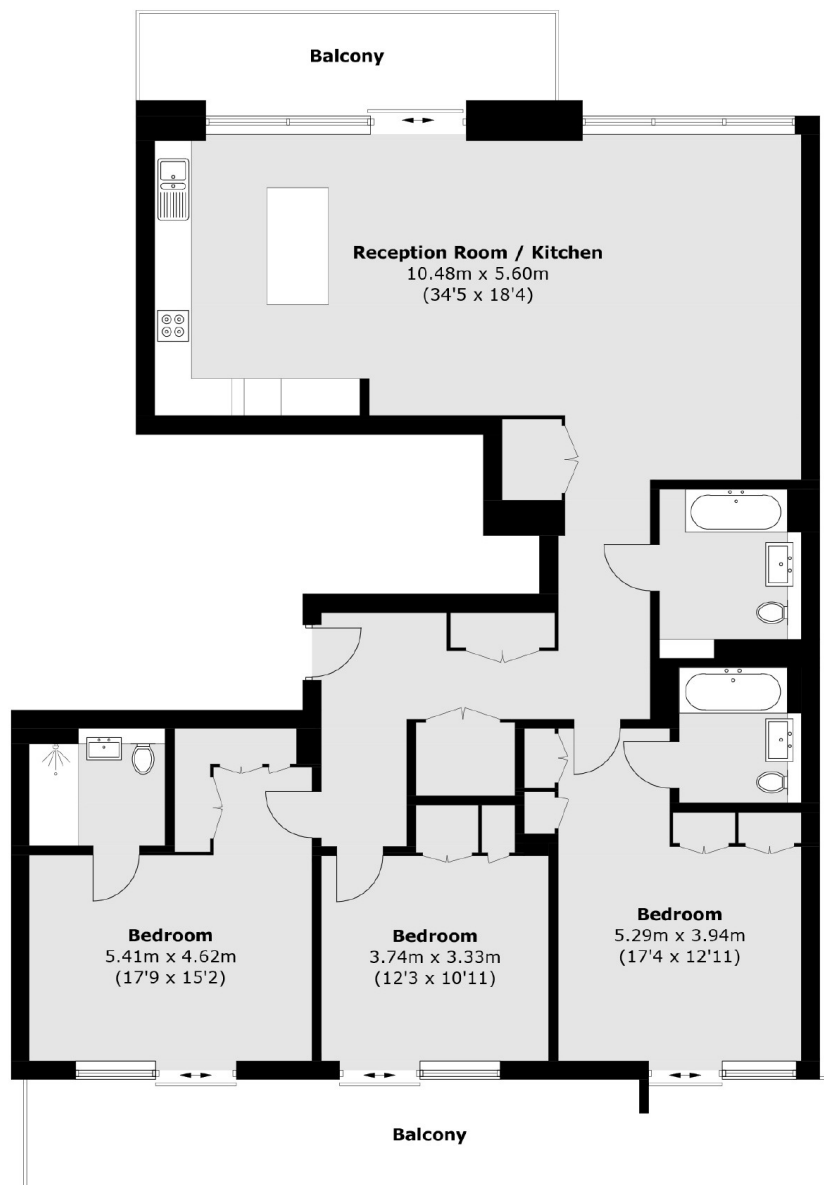
Accommodation comprises three generous double bedrooms, all with built-in wardrobes. Two bedrooms include luxurious en-suite marble bath/shower rooms, while all rooms offer direct access to a terrace. A stylish, contemporary family bathroom completes the layout.

Residents enjoy access to an array of exceptional on-site amenities, including a swimming pool, steam room, fully equipped gym, massage services, virtual golf and games room, cinema, meeting rooms, private dining facilities, and an elegant residents' lounge set around an atrium courtyard garden.





# Parkland Walk, London, SW6



## Tenth Floor

Total area (approx.): 144.1 sq. m (1,551.1 sq. ft)  
Balcony: 33.7 sq. m (362.7 sq. ft)

# Dexters

Fulham  
569 Fulham Road  
London  
SW6 1ES  
Sales  
020 7386 5386

Energy Rating: B. We aim to make our particulars both accurate and reliable. However they are not guaranteed; nor do they form part of an offer or contract. If you require clarification on any points then please contact us, especially if you're traveling some distance to view. Please note that appliances and heating systems have not been tested and therefore no warranties can be given as to their good working order.

 **RICS** | Regulated  
Estate Agent  
and Letting Agent

[dexters.co.uk](https://www.dexters.co.uk)