





Spring Way,Sible Hedingham Halstead CO9 3SB

William Hall

Spring Way, Sible Hedingham Halstead

- Kitchen
- Dining Room
- Landing
- Bedroom One
- En-Suite
- Bedroom 2
- Bedroom 3
- Bathroom
- Front Garden
- Rear Garden

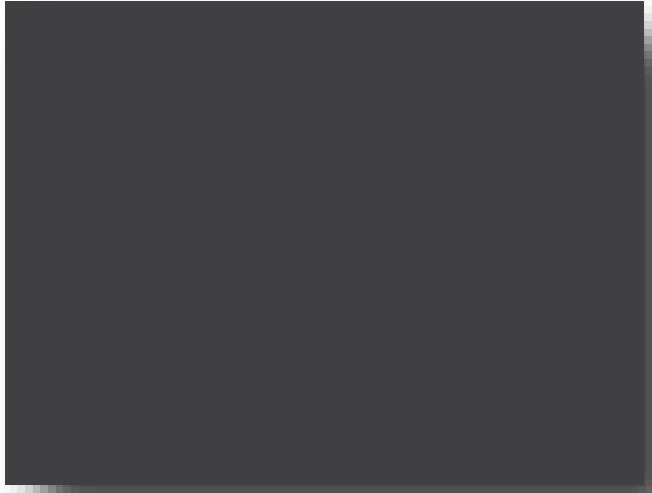
Tenure: Freehold EPC Rating: C

Condition: C

£390,000

This stunning family home has been meticulously planned and finished to a very high standard throughout.

Located in on a highly popular development in the village of Sible Hedingham is this beautiful property that is ready for you to move in, unpack and enjoy.



check out more properties at williambrown.co.uk



Property Ref:
HST108379 - 0002

Not for marketing purposes INTERNAL USE ONLY



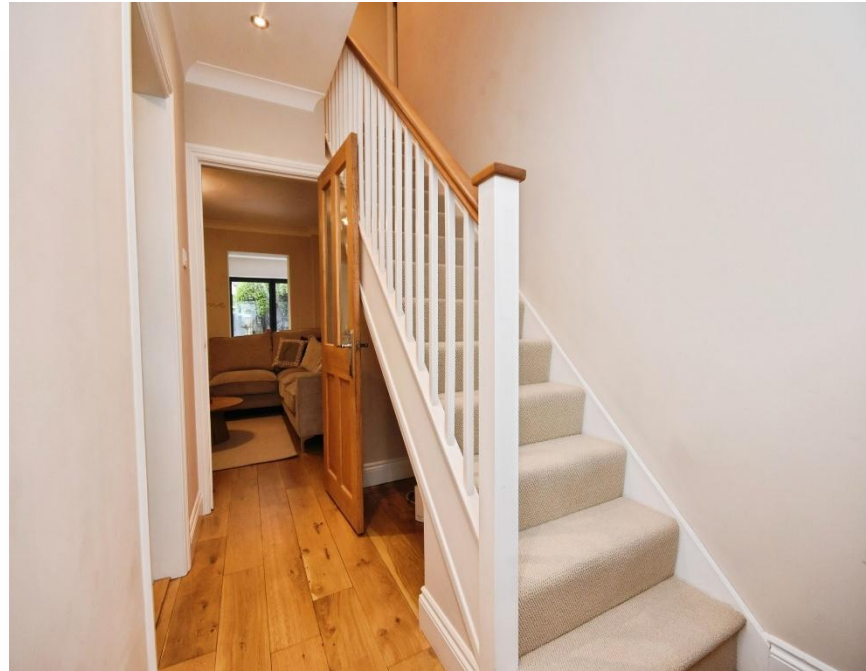
01787 472491



Halstead@williambrown.co.uk



30 High Street, HALSTED, **Not for marketing purposes INTERNAL USE ONLY**



1. MONEY LAUNDERING REGULATIONS Intending purchasers will be asked to produce identification documentation at a later stage and we would ask for your co-operation in order that there is no delay in agreeing the sale. 2. These particulars do not constitute part or all of an offer or contract. 3. The measurements indicated are supplied for guidance only and as such must be considered incorrect. Potential buyers are advised to recheck measurements before committing to any expense. 4. We have not tested any apparatus, equipment, fixtures or services and it is in the buyers interest to check the working condition of any appliances. 5. Where an EPC, or a Home Report (Scotland only) is held for this property, it is available for inspection at the branch by appointment. If you require a printed version of a Home Report, you will need to pay a reasonable production charge reflecting printing and other costs. 6. We are not able to offer an opinion either written or verbal on the content of these reports and this must be obtained from your legal representative. 7. Whilst we take care in preparing these reports, a buyer should ensure that his/her legal representative confirms as soon as possible all matters relating to title including the extent and boundaries of the property and other important matters before exchange of contracts.

