

Lorcan Court

West Drayton • Middlesex • UB7 0FB

PCM: £1,350 PCM



coopers
est 1986

Superb one bedroom apartment situated within a unique contemporary development within close proximity of Heathrow Airport. This stunning apartment benefits from one double bedroom, spacious lounge, fully tiled luxury fitted kitchen with appliances, bathroom with shower, triple glazing, balcony, gas central heating and allocated parking.

Part Furnished.

Entry phone

Double Glazing

Well-presented

Amenities

Fitted Kitchen

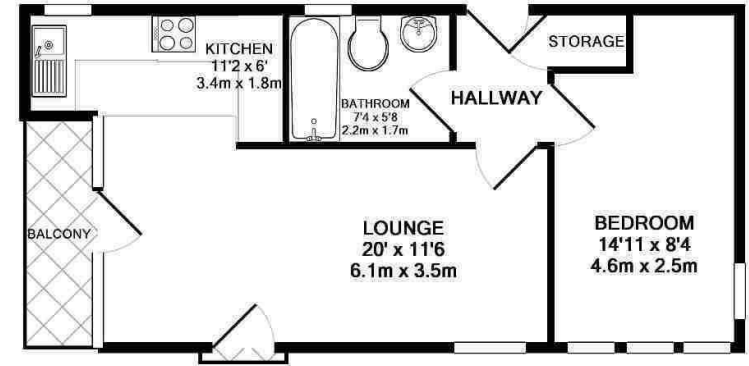
Close to Heathrow Airport

Ample storage space

Part Furnished

Allocated parking space

Transportation links



TOTAL APPROX. FLOOR AREA 438 SQ.FT. (40.7 SQ.M.)

Whilst every attempt has been made to ensure the accuracy of the floor plan contained here, measurements of doors, windows, rooms and any other items are approximate and no responsibility is taken for any error, omission, or mis-statement. This plan is for illustrative purposes only and should be used as such by any prospective purchaser. The services, systems and appliances shown have not been tested and no guarantee as to their operability or efficiency can be given.
 Made with Metropix ©2014



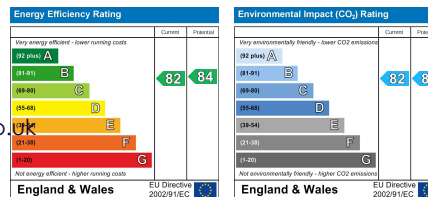
Available Date

20th July 2026

01895 230 103

109 Hillingdon Hill, Hillingdon Village,
 Middlesex, UB10 0JQ
 propertymanagement@coopersresidential.co.uk

CoopersResidential.co.uk



Important Notice: These particulars, whilst believed to be accurate are set out as a general outline only for guidance and do not constitute any part of an offer or contract. Intending purchasers should not rely on them as statements or representation of fact, but must satisfy themselves by inspection or otherwise has the authority to make or give any representation or warranty in respect of the property.

coopers
 est 1986