



Walkers
People & Property

Birch Lane, Stock. CM4 9NA
£1,300,000



Birch Lane

Stock, CM4 9NA

Lane End, Birch Lane - An acre of tranquillity with views that take your breath away. Tucked away at the very end of Birch Lane, Lane End is a modern detached bungalow of circa 2,500 sq ft set on a magnificent one-acre plot, presenting a rare combination of complete privacy, panoramic countryside views, and an easy stroll to Stock's village centre.

Approached via electric gates, the property immediately conveys a sense of seclusion. The house itself has been thoughtfully designed to make the most of its elevated position, with every principal room framing the most spectacular open views across rolling farmland and mature woodland.

Internally, the accommodation is versatile, offering up to four bedrooms depending on layout preference. The principal suite enjoys a large walk-in wardrobe and en-suite, while the guest bedroom also benefits from its own en-suite. A further bathroom serves the remaining rooms. The spacious living room opens directly onto the terrace through French doors, allowing the landscape to become an ever-changing backdrop throughout the seasons. The kitchen/breakfast room, similarly positioned to take in the views, is a bright and sociable space with an adjoining utility room.

Outside, the wraparound patio provides an idyllic setting from which to enjoy the glorious surroundings. The garden transitions naturally into a part-wooded area, home to mature shrubs and majestic oak trees, creating a true haven for wildlife.

Lane End represents an exceptional opportunity to enjoy the best of both worlds: absolute privacy and natural beauty, yet within just a few minutes' walk of Stock's charming pubs, tearooms, and village green. For those seeking a single-storey home with space and extraordinary views, few settings can compare.

Anti-Money Laundering Checks and Legal Support:

A mandatory Anti-Money Laundering (AML) check is required on all buyers and sellers and is facilitated via our legal partner at a cost of £65 per property payable upon instruction. The service also provides access to an unlimited legal advice helpline staffed by qualified solicitors to assist with any questions you may have during your moving journey, and Mover Protection which is designed to help recoup certain costs if your sale or purchase should fail to complete through no fault of your own (terms and limits apply).

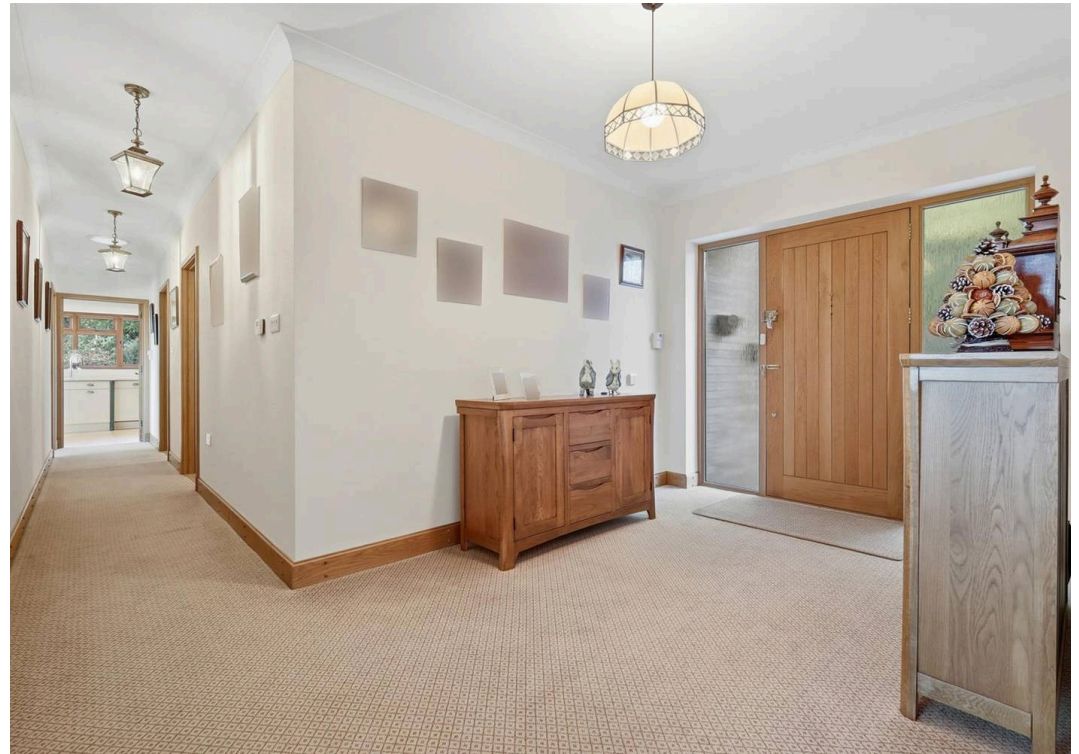
Birch Lane

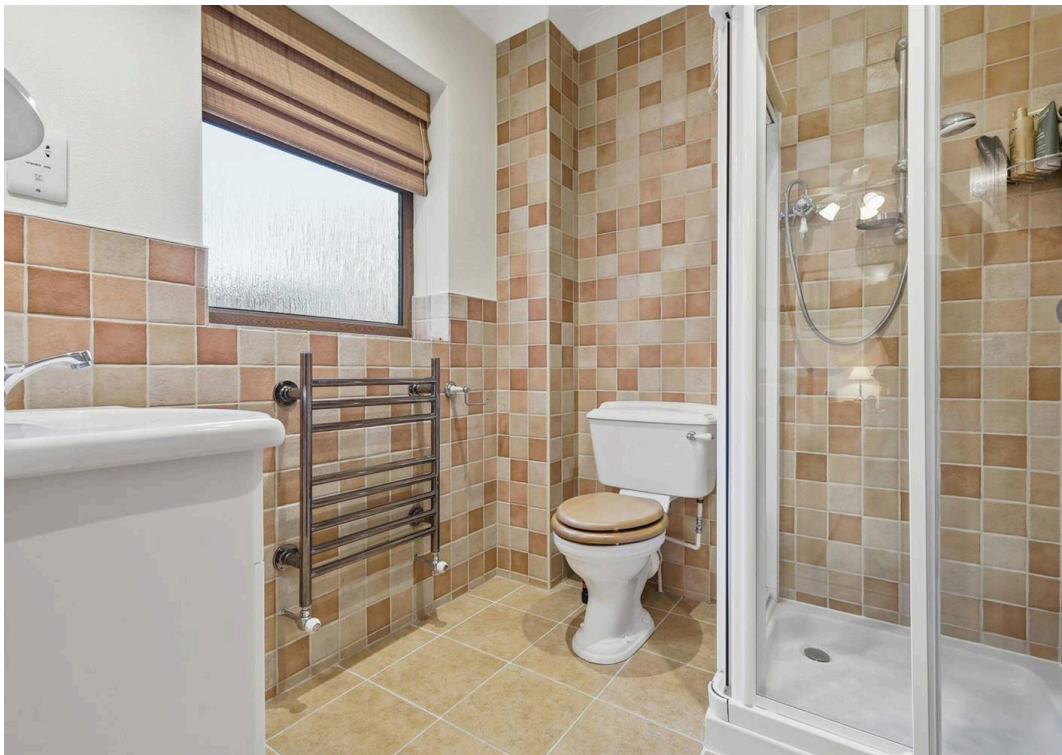
Stock, CM4 9NA

Lane End, Birch Lane - An acre of tranquillity with views that take your breath away. Tucked away at the very end of Birch Lane, Lane End is a modern detached bungalow of circa 2,500 sq ft.
Council Tax band: G

Tenure: Freehold









Ground Floor

Approx. 226.4 sq. metres (2436.8 sq. feet)



Measurements are approximate and for illustration purposes only. While we do not doubt the accuracy and completeness, we advise you conduct a careful independent assessment of the property to determine monetary value.

Psst... Have you heard of

Walkers discreet marketing?

Many people lose out on their dream home to someone in a better position.

Often, it is because they have delayed putting their house on the market, preferring to find somewhere first and then sell,

That is why we have innovated a totally unique and highly confidential moving home solution to put you in a competitive position.

Let us find you a buyer **without any advertising or pressure** and without the neighbours knowing.

Your secret is safe with us...

Get in touch for a complimentary valuation.

Looking To Sell Or Let Your Home?

Book your free valuation to see how much your home is worth.

Contact Us
01277 355005



Our Website

www.walkersstates.co.uk



Our Address

90 High Street
Ingatstone
CM4 9DW



www.walkersstates.co.uk

About Us

Walkers | People & Property is built on a lifelong family passion for homes. Martin, Gillian and Adam Walker lead a respected, professional team who live and breathe all aspects of property. With over 30 years of experience, we understand the moving process on a personal level and are committed to delivering exceptional results. Most of all, helping people move is our hobby, and handing over the keys to excited buyers remains our favourite moment.

Get In Touch



Browse Properties

