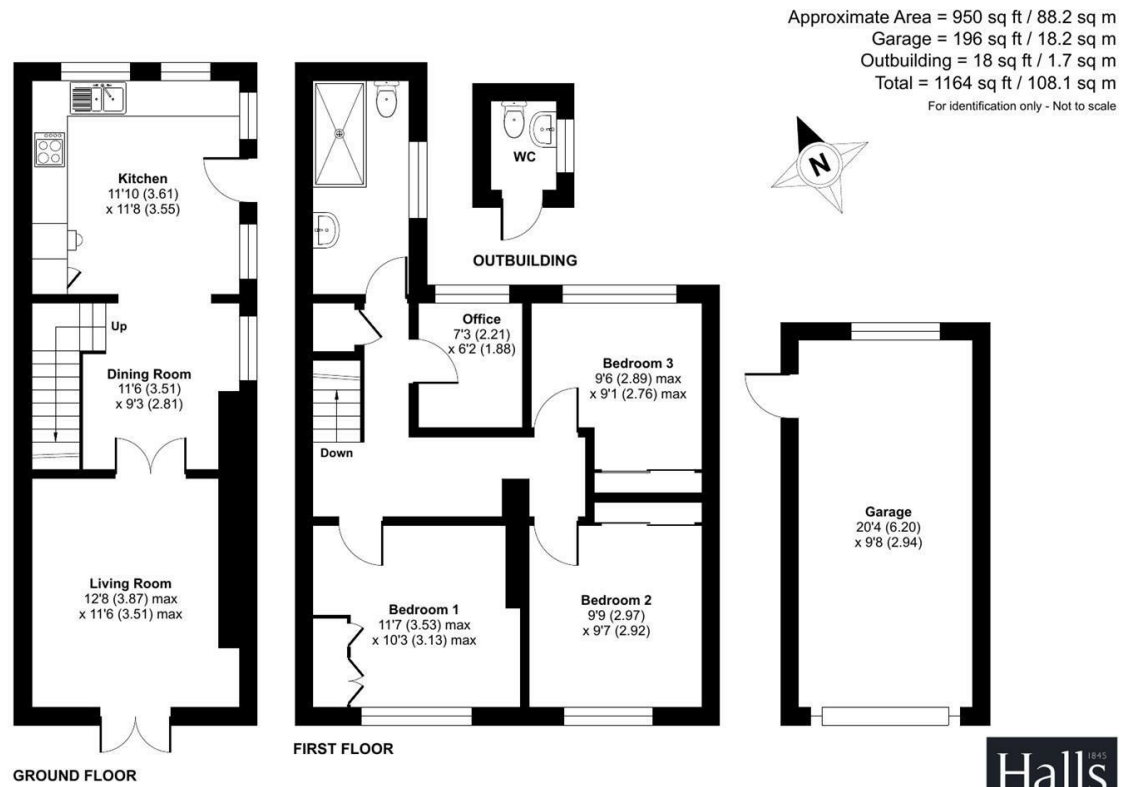


FOR SALE

2, Poplar View Kimberley Lane, St. Martins, Oswestry, SY11 3BB



Floor plan produced in accordance with RICS Property Measurement 2nd Edition, incorporating International Property Measurement Standards (IPMS Residential). © nichcom 2026. Produced for Halls. REF: 1423253



FOR SALE

Offers in the region of £210,000

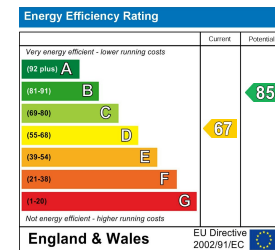
2, Poplar View Kimberley Lane, St. Martins, Oswestry, SY11 3BB

2 Poplar View is a well-proportioned four-bedroom semi-detached home in the popular village of St Martins, offering spacious accommodation, driveway parking with car port and detached garage, and an enclosed rear garden with patio and lawn. Conveniently located close to village amenities and within easy reach of Oswestry, the property is ideal for families or first-time buyers.

**Property to sell?** We would be delighted to provide you with a free no obligation market assessment of your existing property. Please contact your local Halls office to make an appointment. **Mortgage/financial advice.** We are able to recommend a completely independent financial advisor,

who is authorised and regulated by the FCA. Details can be provided upon request. **Do you require a surveyor?** We are able to recommend a completely independent chartered surveyor. Details can be provided upon request.

Energy Performance Rating



01691 670320

Oswestry Sales  
20 Church Street, Oswestry, Shropshire, SY11 2SP  
E: oswestry@hallsgb.com



IMPORTANT NOTICE. Halls Holdings Ltd and any joint agents for themselves, and for the Vendor of the property whose Agents they are, give notice that: (i) These particulars are produced in good faith, are set out as a general guide only and do not constitute any part of a contract (ii) No person in the employment of or any agent of or consultant to Halls Holdings has any authority to make or give any representation or warranty whatsoever in relation to this property (iii) Measurements, areas and distances are approximate, Floor plans and photographs are for guidance purposes only (photographs are taken with a wide angled / zoom lenses) and dimensions shapes and precise locations may differ (iv) It must not be assumed that the property has all the required planning or building regulation consents. Halls Holdings, Bowmen Way, Shrewsbury, Shropshire SY4 3DR. Registered in England 06597073.



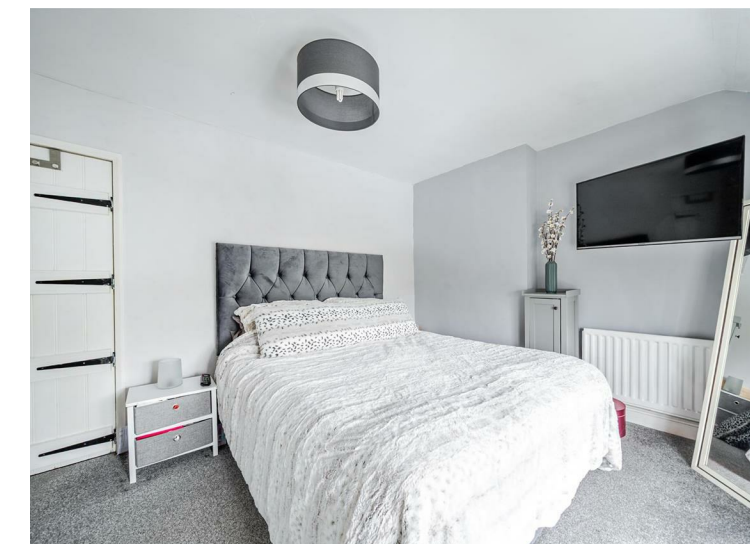
2 Reception Room/s



4 Bedroom/s



2 Bath/Shower Room/s



- Four bedroom semi-detached family home
- Driveway parking with covered car port
- Enclosed rear garden with patio and lawn
- Popular village location in St Martins
- Good road links to Oswestry, Wrexham and Shrewsbury

To the first floor the property offers four bedrooms, including a well-proportioned principal bedroom, together with two further double bedrooms and a fourth bedroom currently used as a home office, offering flexibility for modern living. A family bathroom serves the first-floor accommodation.

Externally, the property benefits from a rear garden providing a pleasant outdoor space suitable for relaxing, gardening or family use. The combination of driveway parking, covered car port and detached garage offers particularly useful parking and storage facilities.

The property occupies a convenient position within St Martins, a well-regarded village offering a range of local amenities including a supermarket, shops, public houses and schooling. The market town of Oswestry is only a short drive away and provides a wider range of shopping, leisure and educational facilities.

This property represents an excellent opportunity for families, first-time buyers or investors seeking a spacious home in a popular village location.

**DESCRIPTION**

2 Poplar View is a well-proportioned four-bedroom semi-detached family home situated in the popular village of St Martins, offering spacious accommodation, excellent parking and a car port leading to a detached garage, together with an enclosed rear garden.

The property is approached via a gated driveway providing off-road parking and access to the covered car port, which leads through to a detached garage, offering excellent storage and further parking potential.

The accommodation briefly comprises an entrance leading into the living room, a comfortable reception space enjoying good natural light. From here access leads through to a separate dining room, providing an ideal space for family dining and entertaining, with the kitchen positioned to the rear of the property and fitted with a range of base and wall units along with space for appliances and access to the outside.

**SITUATION**

The property is situated in the popular village of St Martins, approximately 3 miles from the market town of Oswestry, which offers a comprehensive range of shopping, leisure and educational facilities. St Martins itself provides a good selection of local amenities including a supermarket, convenience stores, public houses, takeaway outlets and primary schooling. The village is well placed for commuting with good road links to Oswestry, Wrexham and Shrewsbury, while the surrounding countryside offers pleasant walks and outdoor pursuits.

**OUTSIDE**

The property is approached via a gated driveway providing off-road parking, which leads to a covered car port positioned to the side of the property. The car port provides additional sheltered parking and leads through to a detached garage, offering useful storage, workshop space or additional parking.

To the rear, the property enjoys an enclosed garden featuring a patio seating area, ideal for outdoor dining and entertaining, together with a lawned garden providing space for family enjoyment and gardening. The garden offers a pleasant and private outdoor setting which complements the property well.

**SCHOOLING**

The property is well placed for schooling, with St Martins School located within the village, offering education for primary and secondary pupils. A wider range of highly regarded schools can also be found in nearby Oswestry, including The Marches School, Oswestry School, and Moreton Hall, catering for both state and independent education.

**SERVICES**

We understand that the property benefits from all mains services, including mains water, electricity, drainage and gas central heating.

**TENURE**

Freehold with vacant possession on completion.

**W3W**

W3W///vessel.uptown.comet

**LOCAL AUTHORITY**

Shropshire County Council.

**COUNCIL TAX BAND**

Council Tax Band: C

**VIEWINGS**

Strictly by appointment with the selling agent.

**ANTI-MONEY LAUNDERING (AML) CHECKS**

We are legally obligated to undertake anti-money laundering checks on all property purchasers. Whilst we are responsible for ensuring that these checks, and any ongoing monitoring, are conducted properly; the initial checks will be handled on our behalf by a specialist company, Movebutler, who will reach out to you once your offer has been accepted. The charge for these checks is £30 (including VAT) per purchaser, which covers the necessary data collection and any manual checks or monitoring that may be required. This cost must be paid in advance, directly to Movebutler, before a memorandum of sale can be issued, and is non-refundable. We thank you for your cooperation.