



Oxford Crescent, KT3

£800,000

An attractive 1930s three bedroom semi-detached family home, presented in excellent condition throughout. The property benefits from off street parking for several vehicles to the front and a beautifully landscaped, west facing rear garden, thoughtfully designed and planted to maximise outdoor living and entertaining.

Oxford Crescent is a peaceful residential street in a sought after area, located less than a mile from New Malden town centre, which offers a wide range of shops and convenient access to the mainline station. For drivers, the nearby A3 provides excellent links both into central London and out towards the surrounding areas.

Features

- Three Bedrooms
- Semi Detached
- Landscaped Rear Garden
- Large Through Lounge
- Backing Onto Parkland
- Off Street Parking



Oxford Crescent, KT3

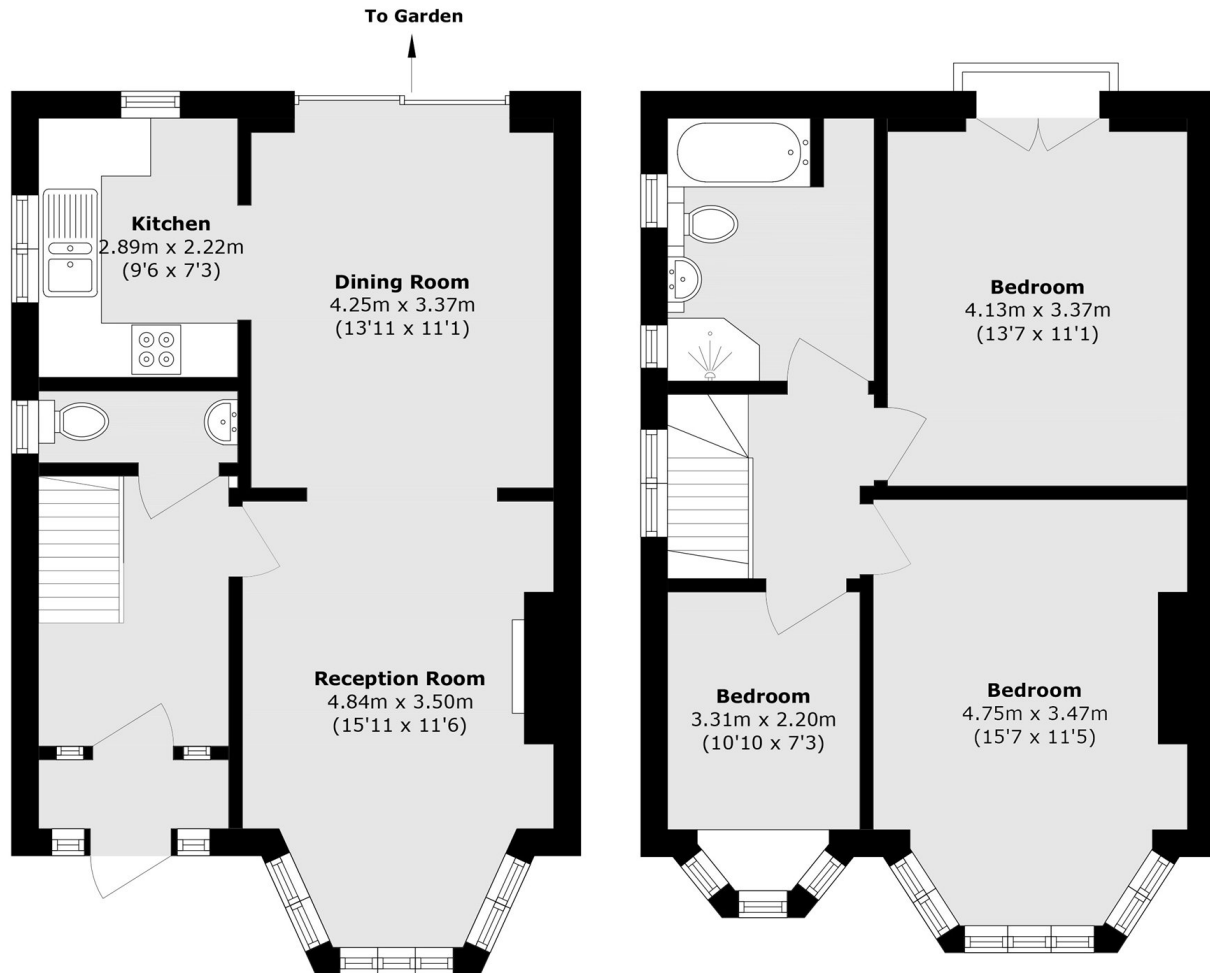
You enter the property through a convenient entrance porch leading into a spacious and welcoming entrance hall, which also provides access to the ground floor WC. The through lounge comprises a bay fronted living room to the front, featuring a charming fireplace and attractive stripped wood flooring that extends into the dining area, which in turn opens onto the rear garden via large sliding patio doors. The modern kitchen, accessed from the dining room, is fitted with work surfaces on three sides and a tiled floor.

On the first floor, there are two double bedrooms, a single bedroom, and a family bathroom. The front double bedroom enjoys a large bay window, while the rear double offers opening doors with views over the garden and parkland beyond.

Externally, the front of the property features a generous brick paved area providing off street parking for multiple vehicles and wide side access to the rear. The west facing rear garden has been thoughtfully landscaped, incorporating a patio directly off the house, a central lawn, additional patio areas, and a covered pergola tucked into the corner. Mature flower and shrub borders complete this impressive and secluded outdoor space, perfect for relaxing and entertaining.



Oxford Crescent, New Malden, KT3



Ground Floor

First Floor

Total area (approx.): 97.2 sq. m (1046.2 sq. ft)