



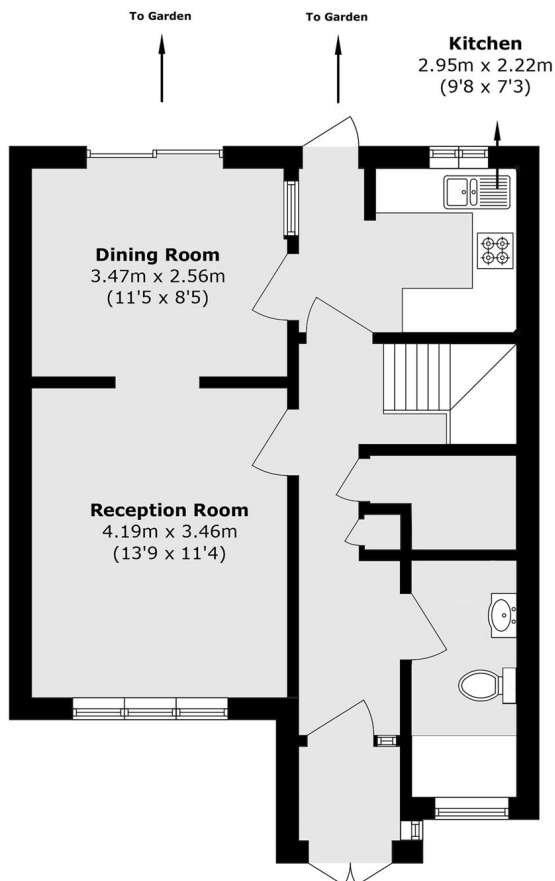
Hanger View Way, W3

£715 pw (£3100 pcm)

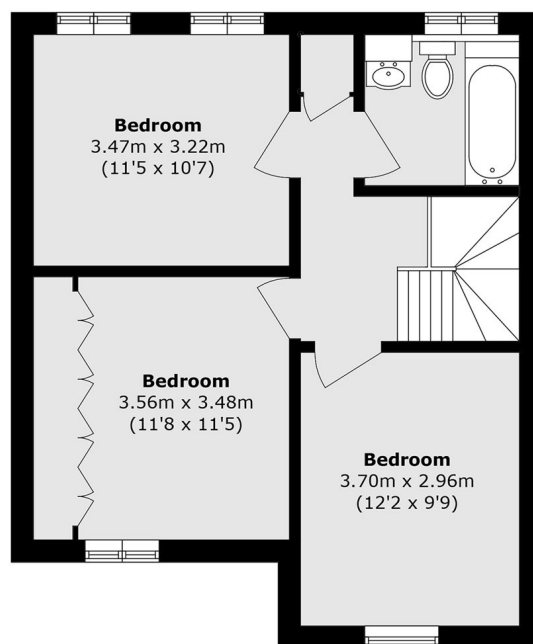
A beautifully presented three-bedroom townhouse ideally located within easy reach of North Ealing and West Acton tube stations. The property features three generous double bedrooms, a spacious through-lounge reception, a well-appointed separate kitchen, and a dedicated dining area. A bright and modern bathroom suite complements the home, along with the added convenience of two W/Cs, a utility area, and a private driveway. Further benefits include gas central heating and double glazing throughout.

Hanger View Way is located 0.5 Miles walk to North Ealing Station (Piccadilly Line) and 0.4 Miles Walk to West Acton Station (Central Line)

- Three Bedrooms • Downstairs W/C • North Ealing Station •



Ground Floor



First Floor

Total area (approx.): 99.7 sq. m (1073.2 sq. ft)

Robertson Smith & Kempson Acton Lettings
137 High Street,
Acton, London, W3
020 8896 3967
actonlettings@robertsonsmithandkempson.co.uk

Energy Rating: . We aim to make our particulars both accurate and reliable. However they are not guaranteed; nor do they form part of an offer or contract. If you require clarification on any points then please contact us, especially if you're traveling some distance to view. Please note that appliances and heating systems have not been tested and therefore no warranties can be given as to their good working order.