



Sinclair Gardens W14

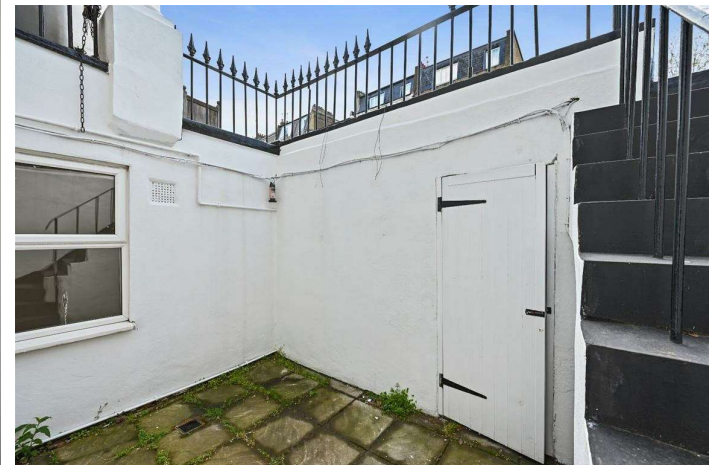


Sinclair Gardens W14

DOUBLE BEDROOM
OPEN PLAN RECEPTION / KITCHEN
BATHROOM
STORAGE
TERRACE
EPC RATING D 61
COUNCIL TAX BAND C
LEASE LENGTH: 959 YRS APX
SERVICE CHARGE: £1,880 PA APX
(including building insurance)

A very well configured 1 bedroom apartment situated on the lower ground floor of an imposing stucco fronted Victorian Building. The open plan reception/kitchen is spacious and bright with storage and a large south facing bay window with French doors opening onto the terrace. The double bedroom is beside and has ample built-in storage. There is a contemporary bathroom to the rear. This Victorian conversion of approximately 423 sq ft has a wood floor throughout and is ideally located for Brook Green's many gastro pubs, restaurants and shops. Westfield London is within easy walking distance along with the recent wonderful Olympia London development.

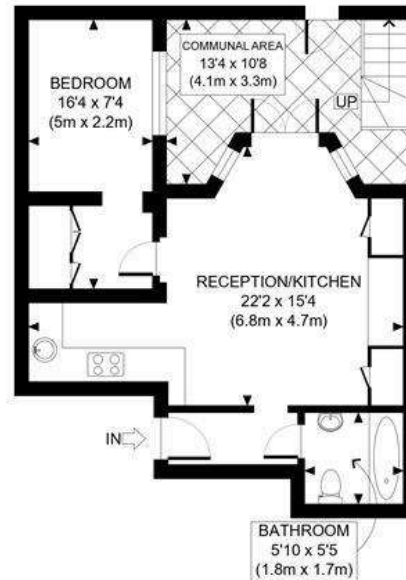
PRICE GUIDE £365,000
LEASEHOLD
SUBJECT TO CONTRACT







SINCLAIR GARDENS, W14



LOWER GROUND FLOOR



APPROX. GROSS INTERNAL FLOOR AREA: 423 SQ FT/ 39 SQM