



Laburnum Road, SW19  
£900,000

**Dexters**



## Laburnum Road, SW19

A three/four bedroom, two bathroom Victorian house. Lovingly restored, with real wood flooring running throughout the house, an exceptional kitchen, luxury family bathroom and two bedroom loft conversion.

The ground floor has a separate reception room to the front, with a fireplace and wood flooring. There is a separate dining room to the rear, with an exceptional, modern, refitted kitchen, complete with a large range, Belfast sink and quartz work surfaces. A utility room resides to the back with access to the garden.

The first floor offers two double bedrooms, the larger of the two has built in wardrobes and three large sash windows. To the rear of the first floor, the current owners have meticulously renovated the large family bathroom to create an exquisite four piece luxury bathroom, with marble flooring, a double ended free standing stone bath and walk in shower.

The loft has been converted, offering a study/ bedroom four, as well as a principle bedroom and bathroom, also with a marble floor.

A popular and quiet, no through road between Wimbledon and Colliers Wood. The road is peaceful, quiet and close to Wandle Park and Haydons Recreation Grounds, with the Northern Line just a stone's throw away.

### Features

- Three/Four Bedrooms
- Two Bathrooms
- Mid Terrace Victorian
- Large Rear Garden
- Cul De Sac Street
- Luxury Kitchen And Bathroom







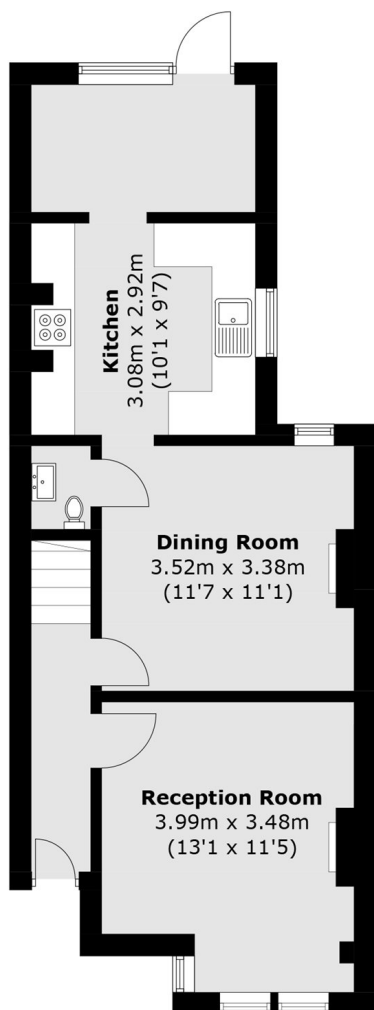




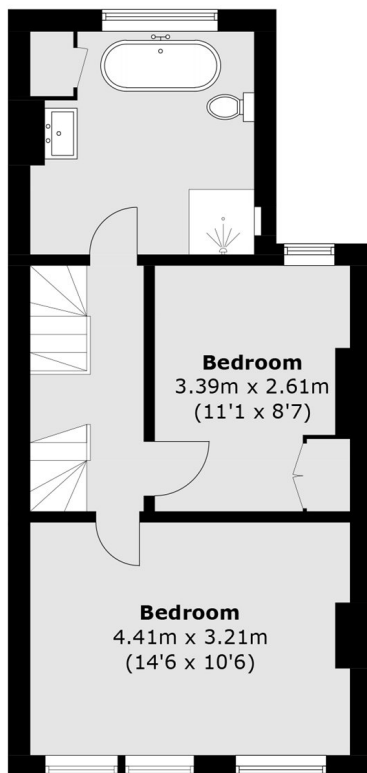




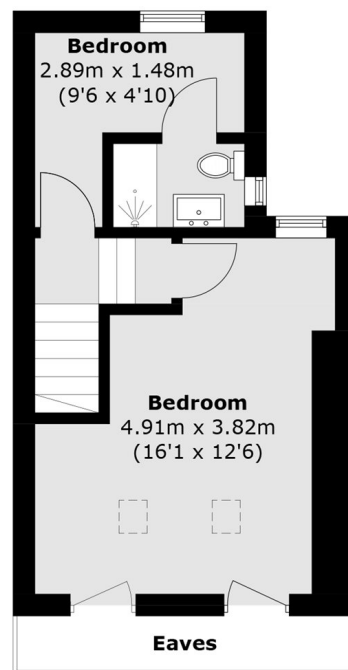
# Laburnum Road, London, SW19



**Ground Floor**



**First Floor**



**Second Floor**

Total area (approx.): 114.8 sq. m (1235.6 sq. ft)  
(Excluding Eaves)