



The Abbey and The Abbott

1 bedroom cottage flats

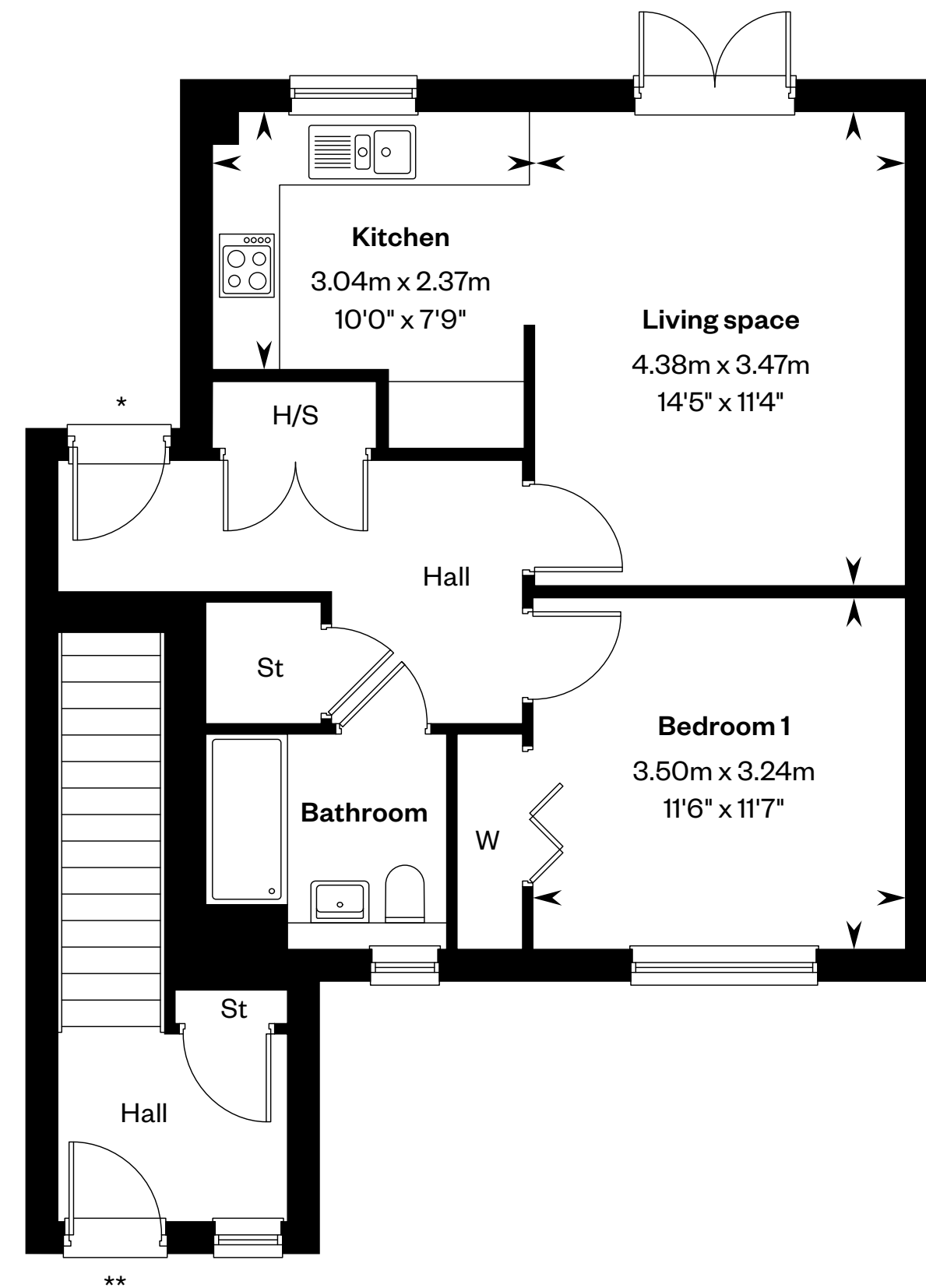


The Abbey and The Abbott

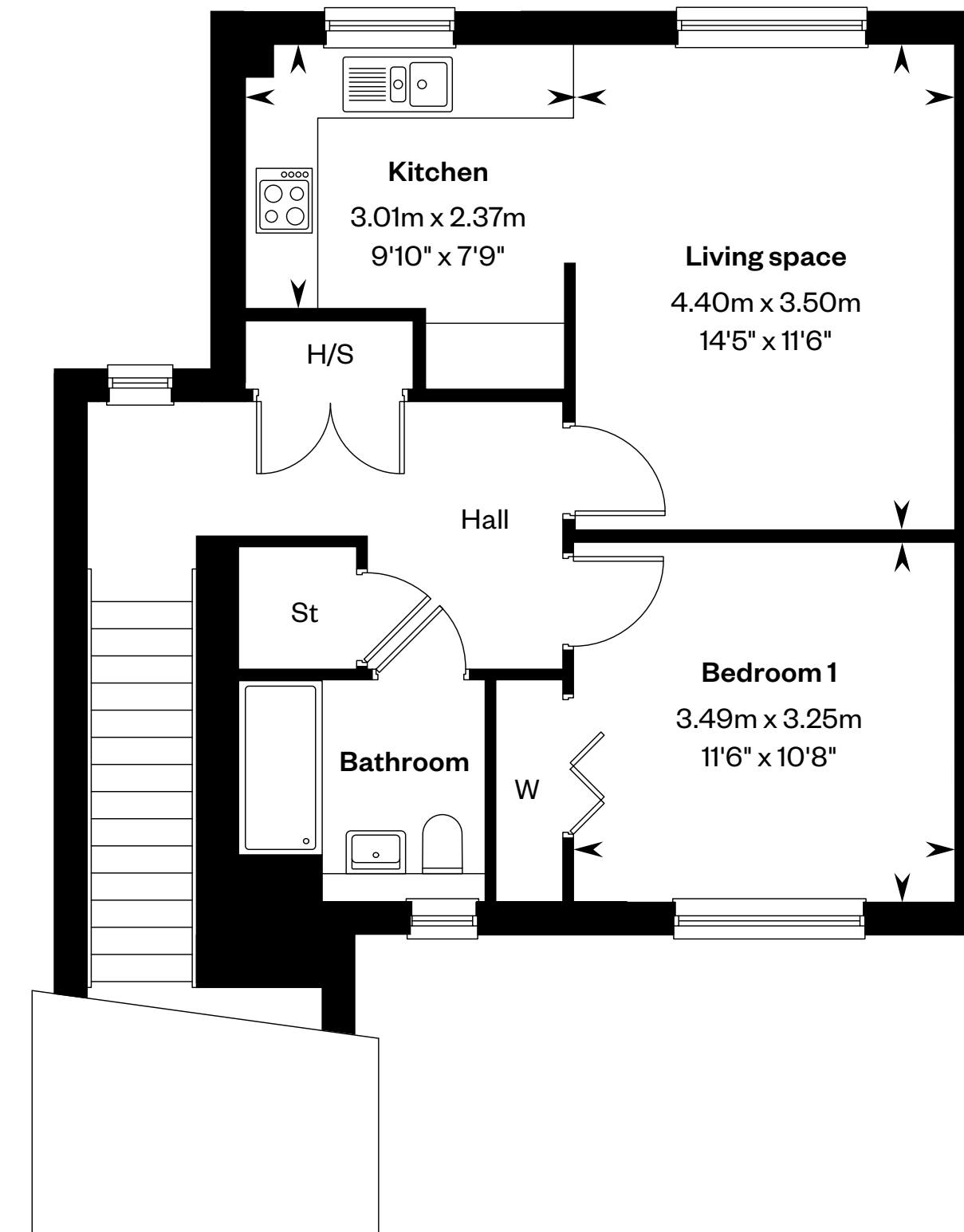
1 bedroom cottage flats

Plots 49 & 50 – as shown

Plots 51 & 52 – handed



Ground floor – The Abbey



First floor – The Abbott

*Entrance to Ground floor Abbey. **Entrance to First floor Abbott.

H/S: Heating source cupboard. St: Store cupboard. W: Wardrobe.

IMPORTANT NOTICE TO CUSTOMERS: The Consumer Protection from Unfair Trading Regulations 2008. Cala Homes (West) Limited operates a policy of continual product development and the specifications outlined in this brochure are indicative only. The computer generated images and photographs do not necessarily represent the actual finishings/elevation or treatments, landscaping, furnishings and fittings at this development. Information contained is accurate at date of publication on 11.03.26. See the main brochure for the full Consumer Protection statement.



The Allan

3 bedroom mid-terraced home

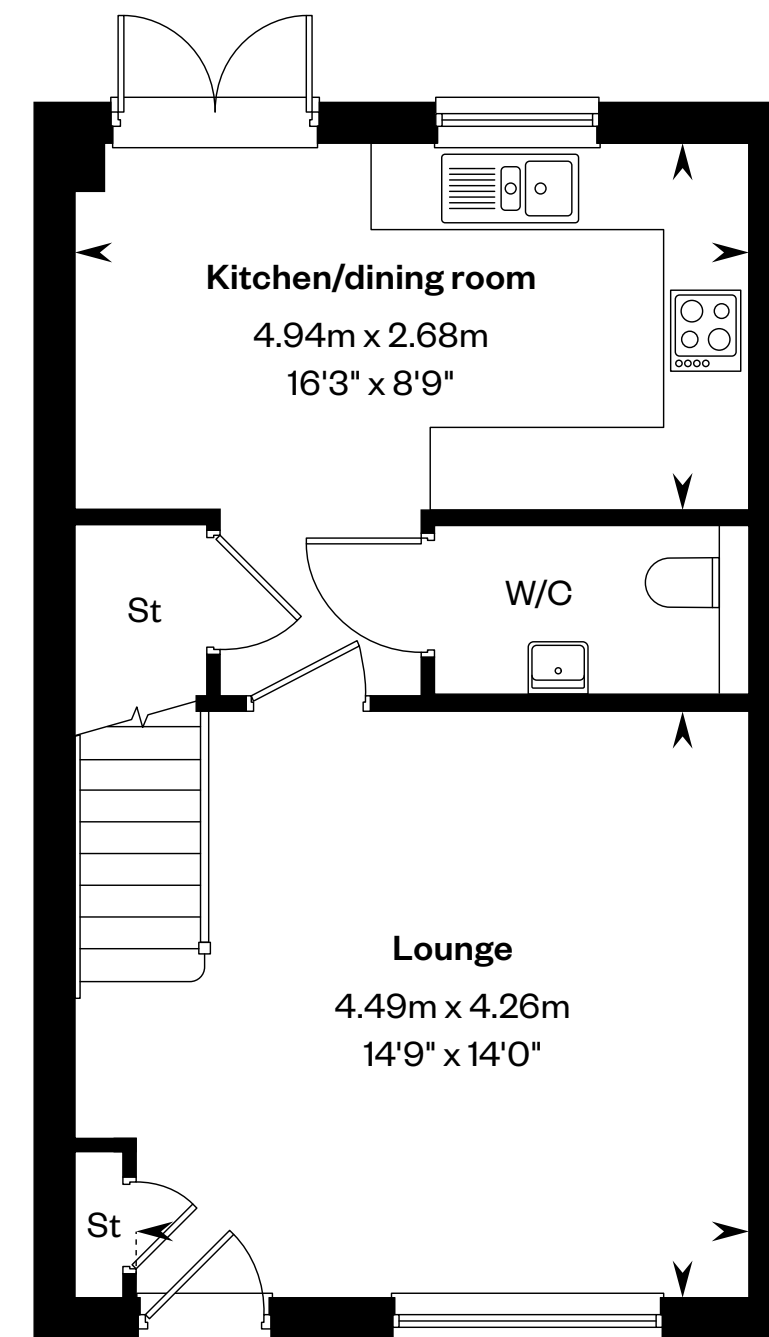


The Allan

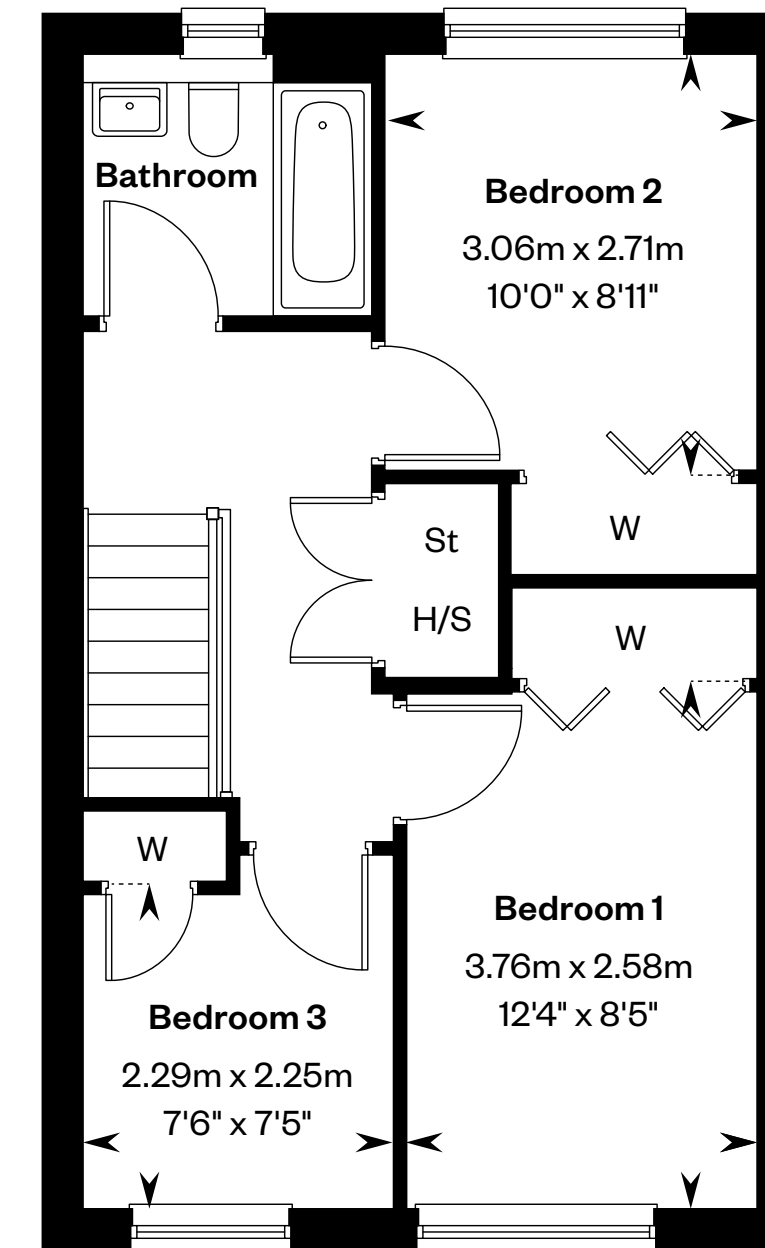
3 bedroom mid-terraced home

Plot 42 – as shown

Plot 43 – handed



Ground floor



First floor

St: Store cupboard. W: Wardrobe.

IMPORTANT NOTICE TO CUSTOMERS: The Consumer Protection from Unfair Trading Regulations 2008. Cala Homes (West) Limited operates a policy of continual product development and the specifications outlined in this brochure are indicative only. The computer generated images and photographs do not necessarily represent the actual finishings/elevation or treatments, landscaping, furnishings and fittings at this development. Information contained is accurate at date of publication on 11.03.26. See the main brochure for the full Consumer Protection statement.



The Arisaig

3 bedroom mid-terraced home

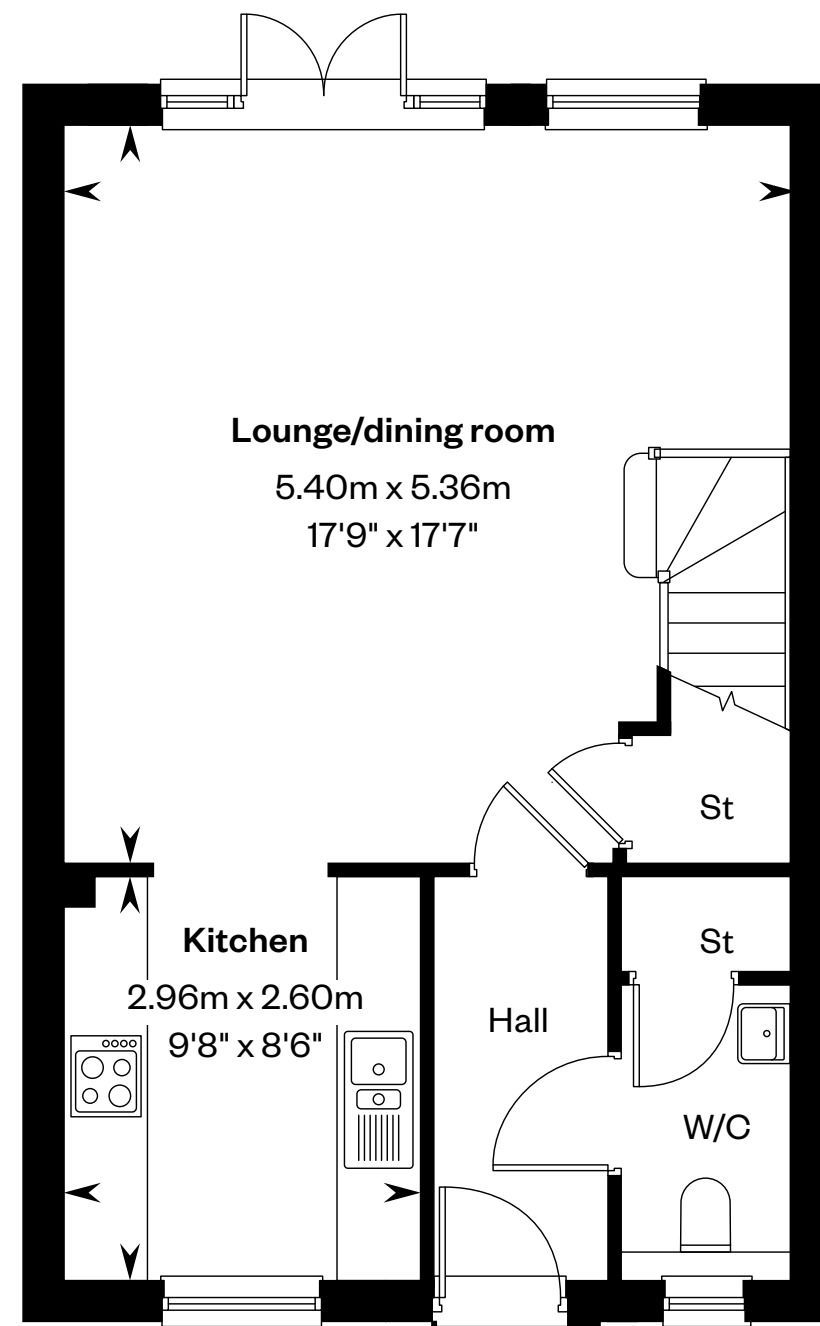


The Arisaig

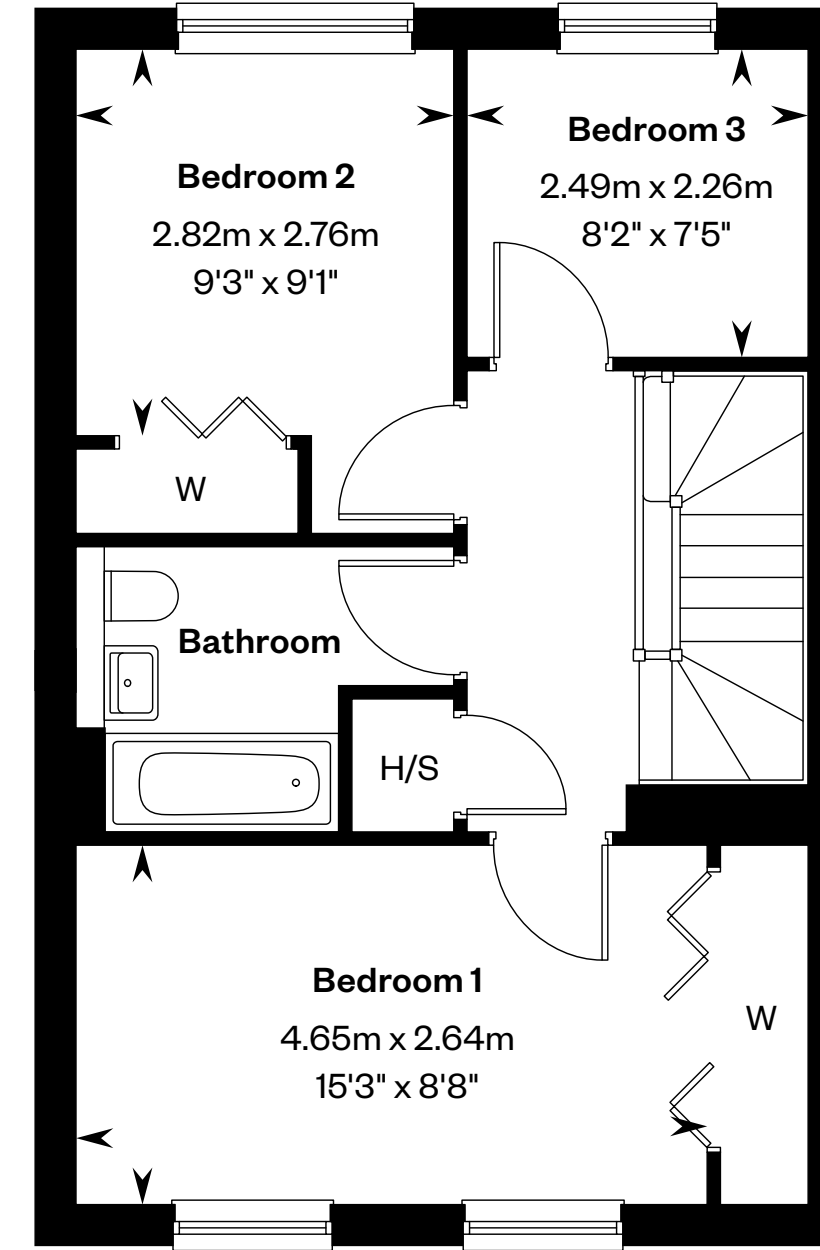
3 bedroom mid-terraced home

Plot 29 – as shown

Plot 30 – handed



Ground floor



First floor

H/S: Heating source cupboard. St: Store cupboard. W: Wardrobe.

IMPORTANT NOTICE TO CUSTOMERS: The Consumer Protection from Unfair Trading Regulations 2008. Cala Homes (West) Limited operates a policy of continual product development and the specifications outlined in this brochure are indicative only. The computer generated images and photographs do not necessarily represent the actual finishings/elevation or treatments, landscaping, furnishings and fittings at this development. Information contained is accurate at date of publication on 11.03.26. See the main brochure for the full Consumer Protection statement.



The Avon

3 bedroom semi-detached
or terraced home



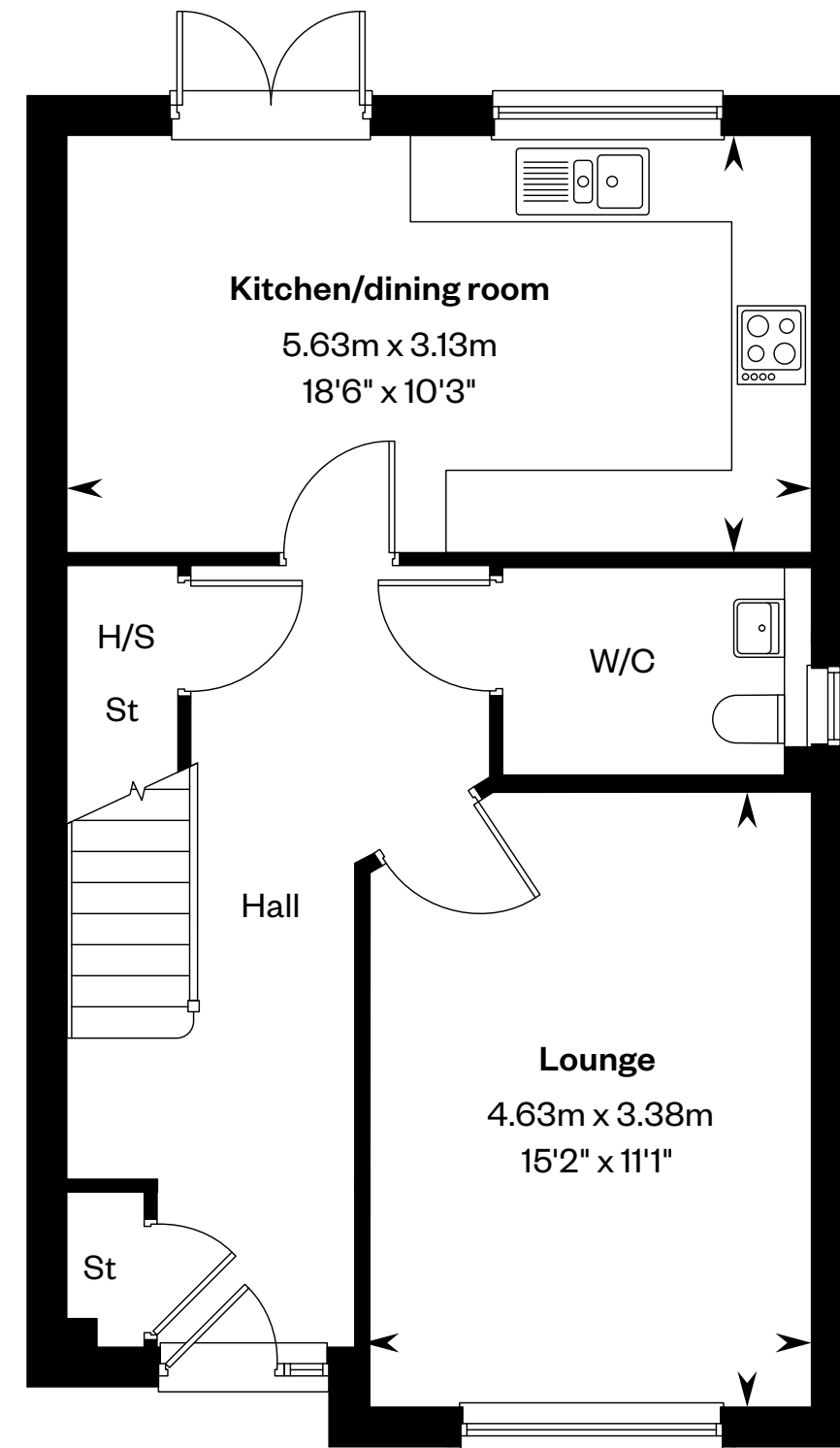
The Avon

The Avon

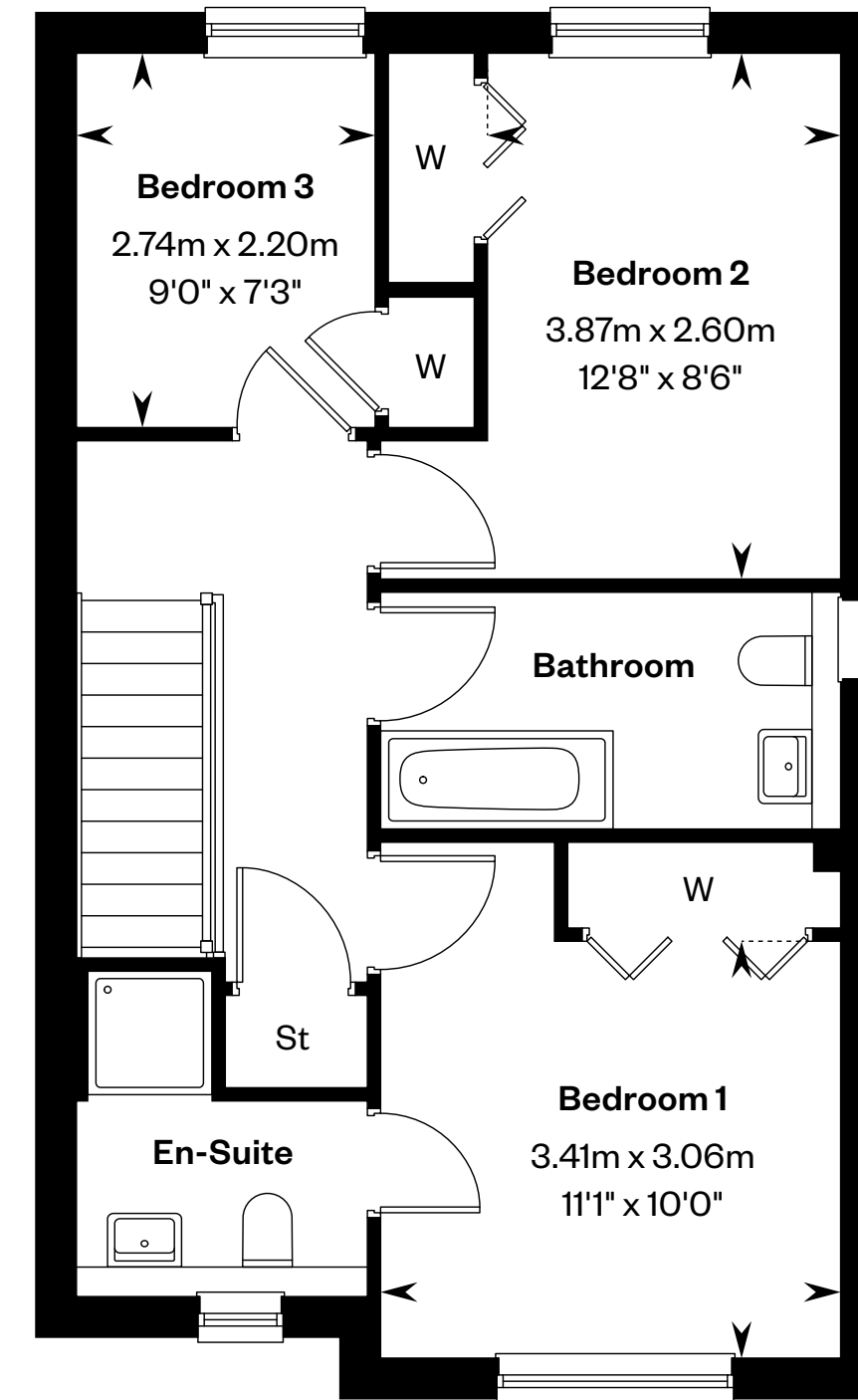
3 bedroom semi-detached or terraced home

Plots 31, 44 & 48 – as shown

Plots 28, 41 & 47 – handed



Ground floor



First floor

St: Store cupboard. W: Wardrobe.

IMPORTANT NOTICE TO CUSTOMERS: The Consumer Protection from Unfair Trading Regulations 2008. Cala Homes (West) Limited operates a policy of continual product development and the specifications outlined in this brochure are indicative only. The computer generated images and photographs do not necessarily represent the actual finishings/elevation or treatments, landscaping, furnishings and fittings at this development. Information contained is accurate at date of publication on 11.03.26. See the main brochure for the full Consumer Protection statement.



The Banton

3 bedroom semi-detached home

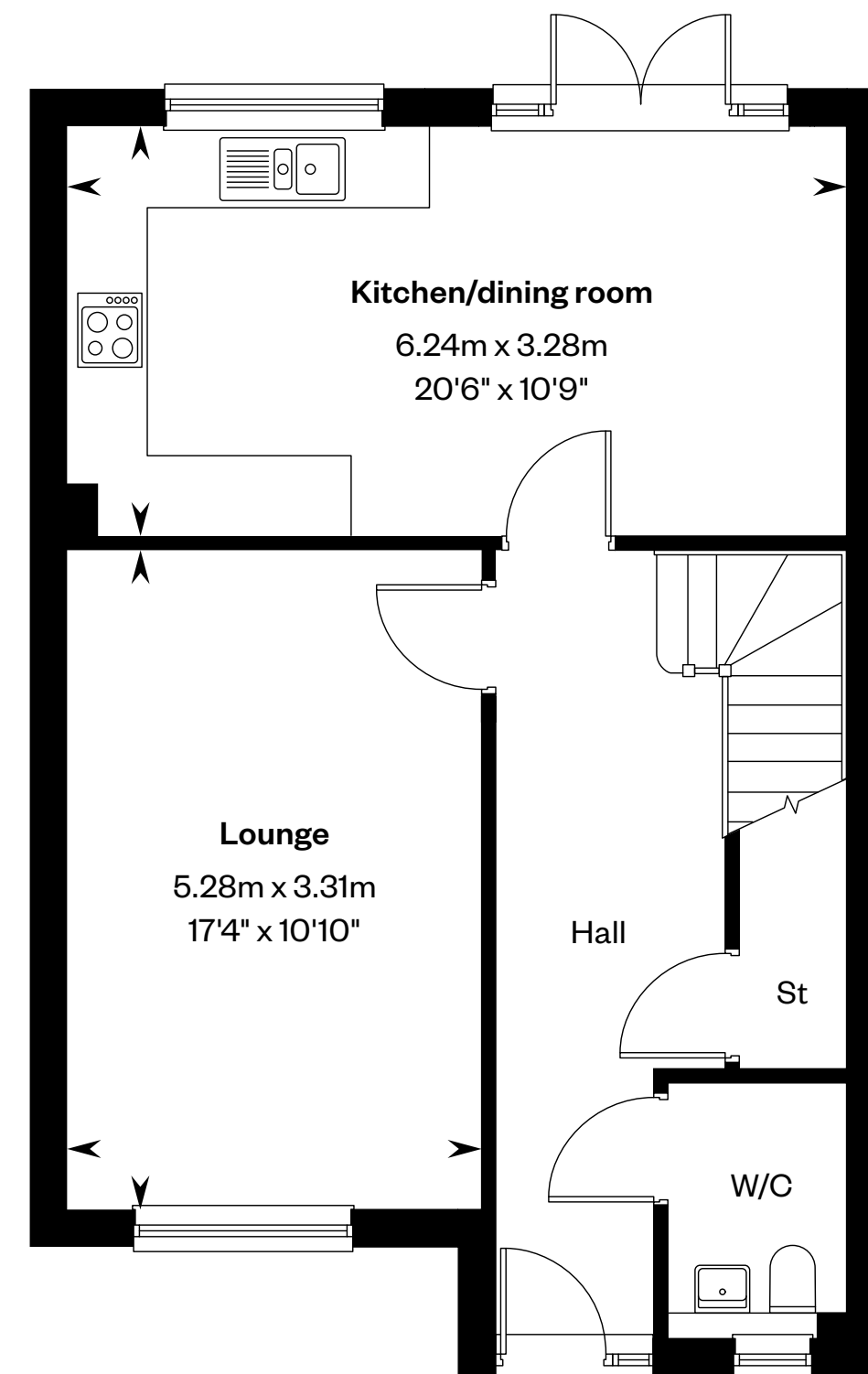


The Banton

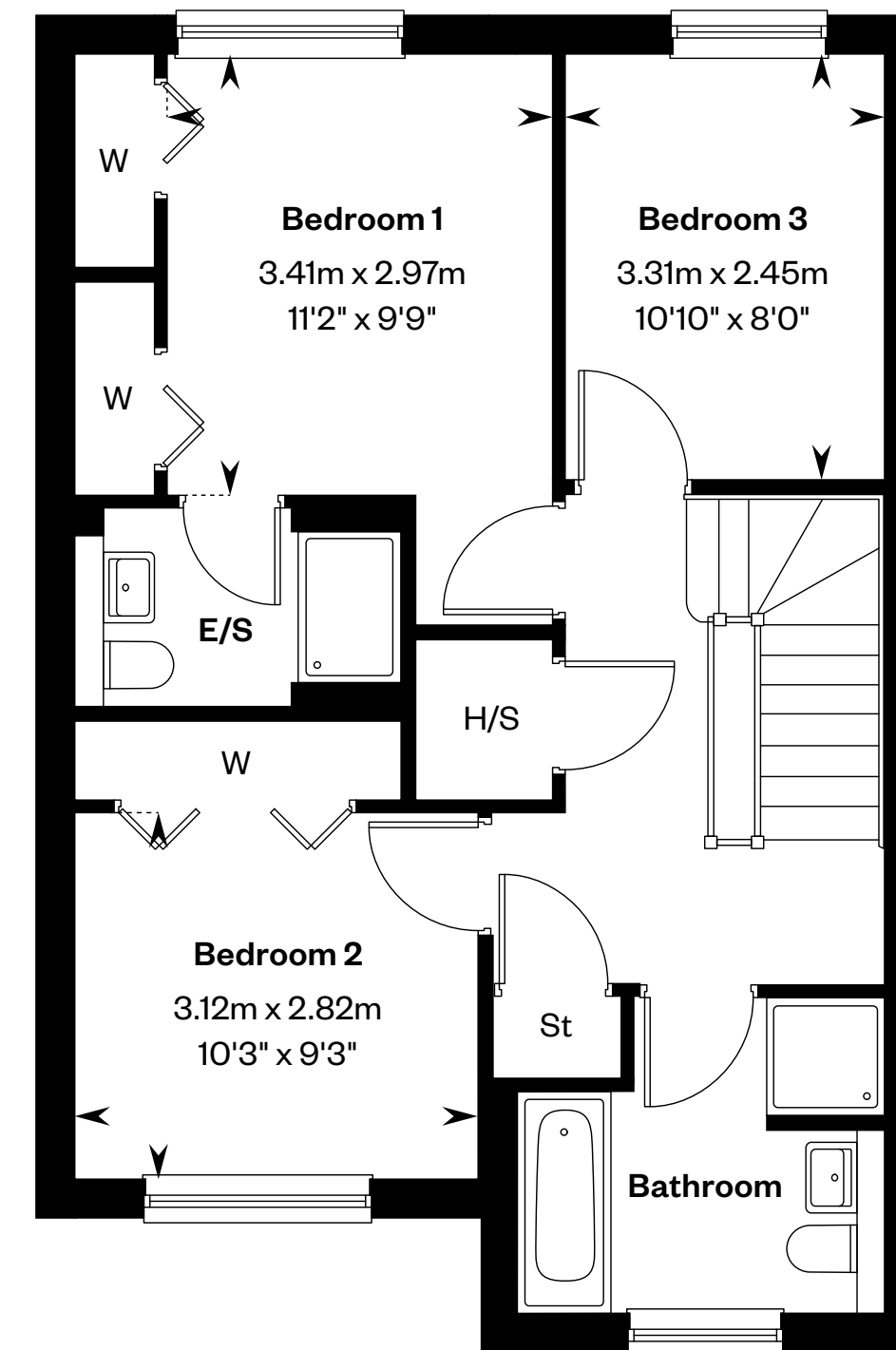
3 bedroom semi-detached home

Plots 17, 37 & 40 – as shown

Plots 16, 36 & 39 – handed



Ground floor



First floor

E/S: En-Suite. St: Store cupboard. W: Wardrobe.

IMPORTANT NOTICE TO CUSTOMERS: The Consumer Protection from Unfair Trading Regulations 2008. Cala Homes (West) Limited operates a policy of continual product development and the specifications outlined in this brochure are indicative only. The computer generated images and photographs do not necessarily represent the actual finishings/elevation or treatments, landscaping, furnishings and fittings at this development. Information contained is accurate at date of publication on 11.03.26. See the main brochure for the full Consumer Protection statement.



The Bargower

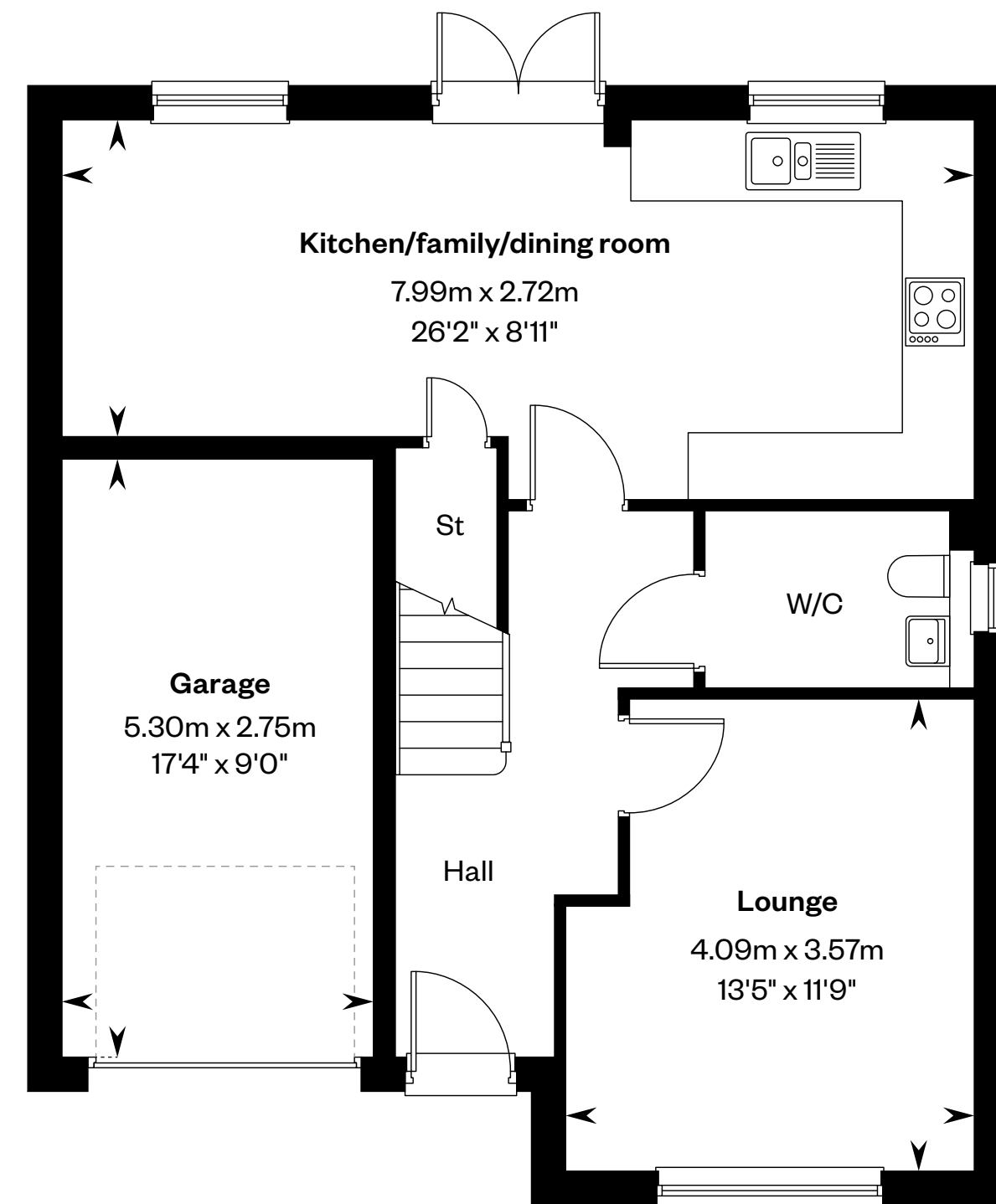
4 bedroom detached home



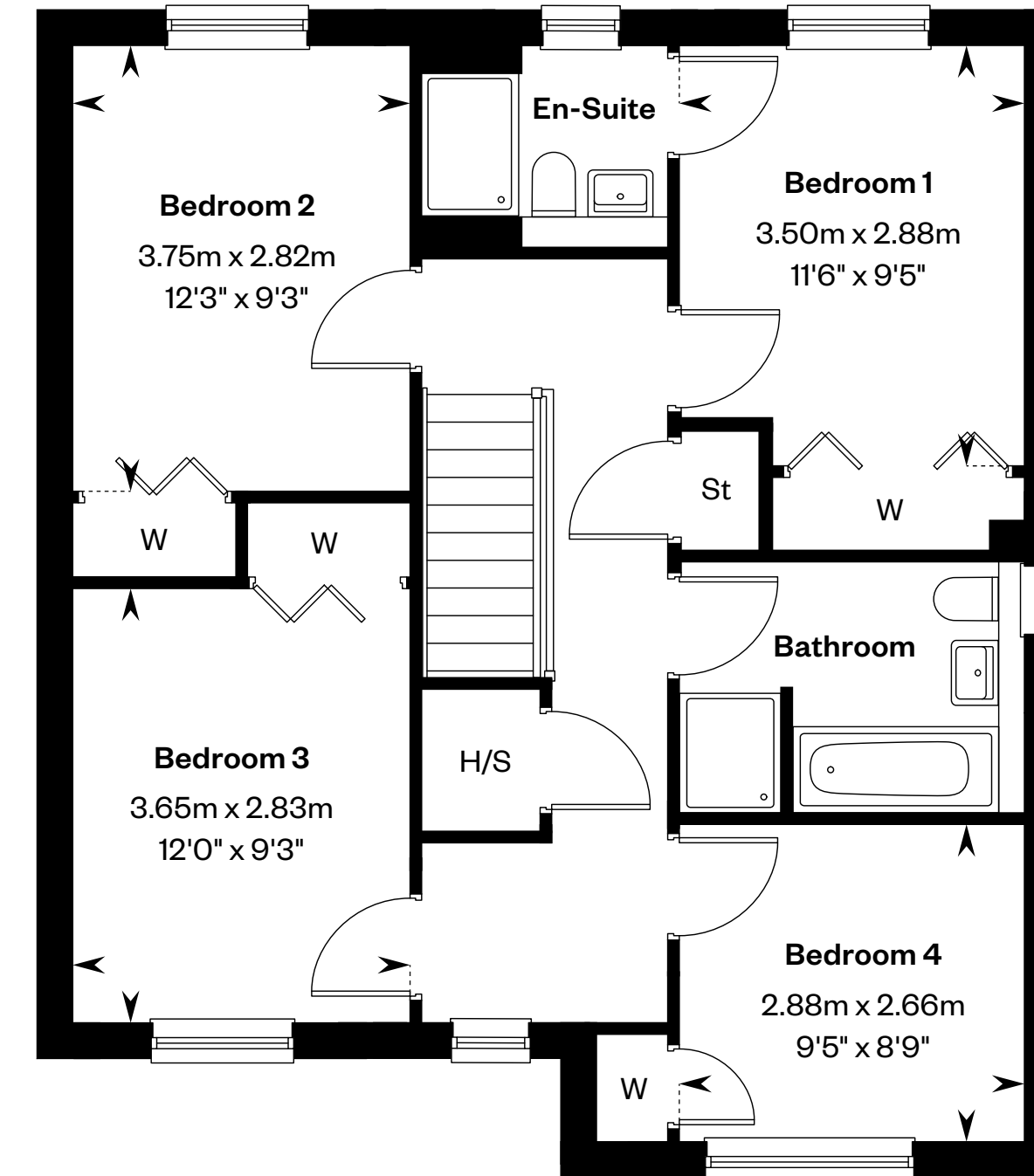
The Bargower

4 bedroom detached home

Plots 34 & 38 – handed



Ground floor



First floor

H/S: Heating source cupboard. St: Store cupboard. W: Wardrobe.

IMPORTANT NOTICE TO CUSTOMERS: The Consumer Protection from Unfair Trading Regulations 2008. Cala Homes (West) Limited operates a policy of continual product development and the specifications outlined in this brochure are indicative only. The computer generated images and photographs do not necessarily represent the actual finishings/elevation or treatments, landscaping, furnishings and fittings at this development. Information contained is accurate at date of publication on 11.03.26. See the main brochure for the full Consumer Protection statement.



The Brodick

4 bedroom detached home



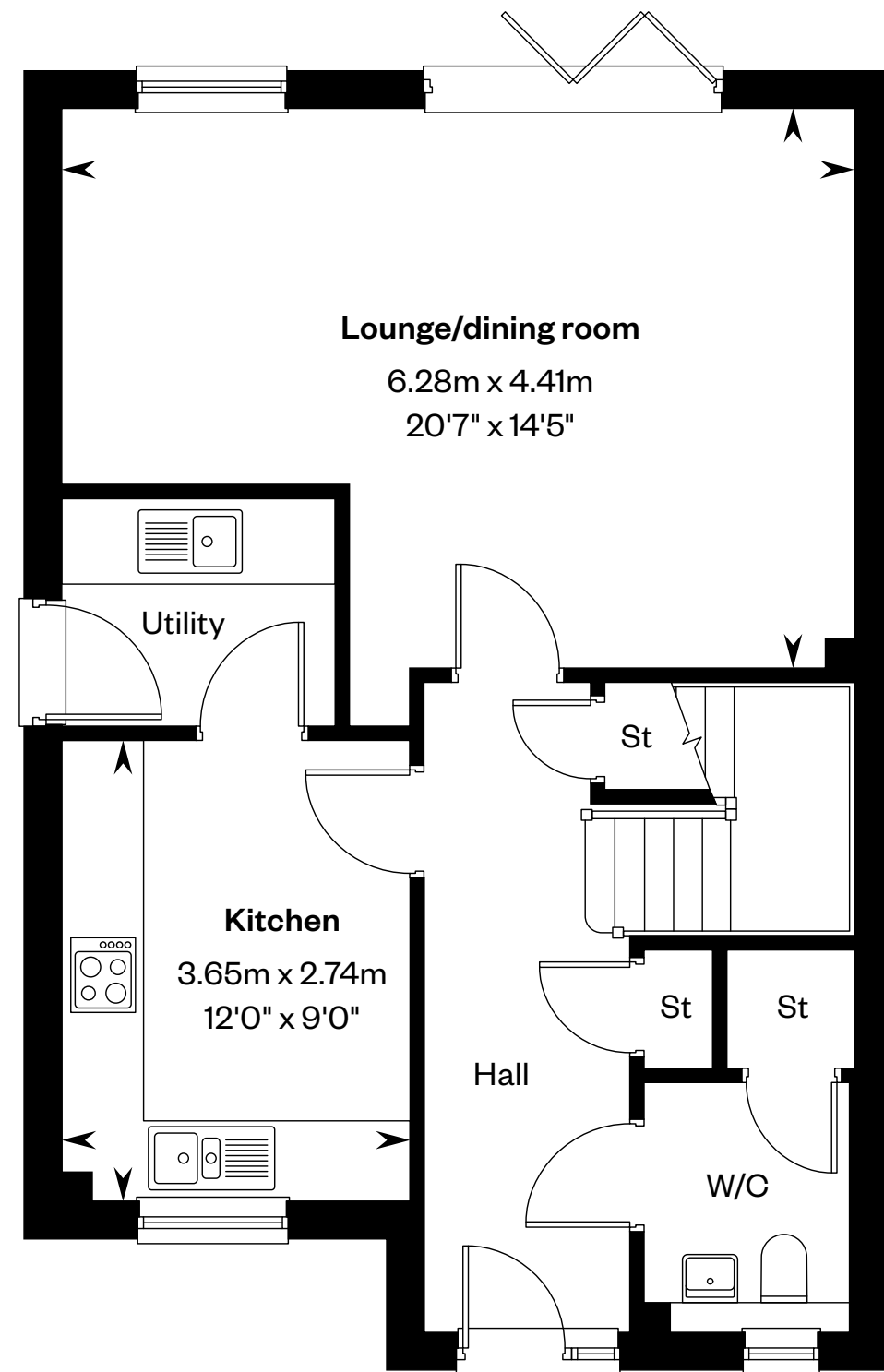
Computer Generated Image - The Brodick

The Brodick

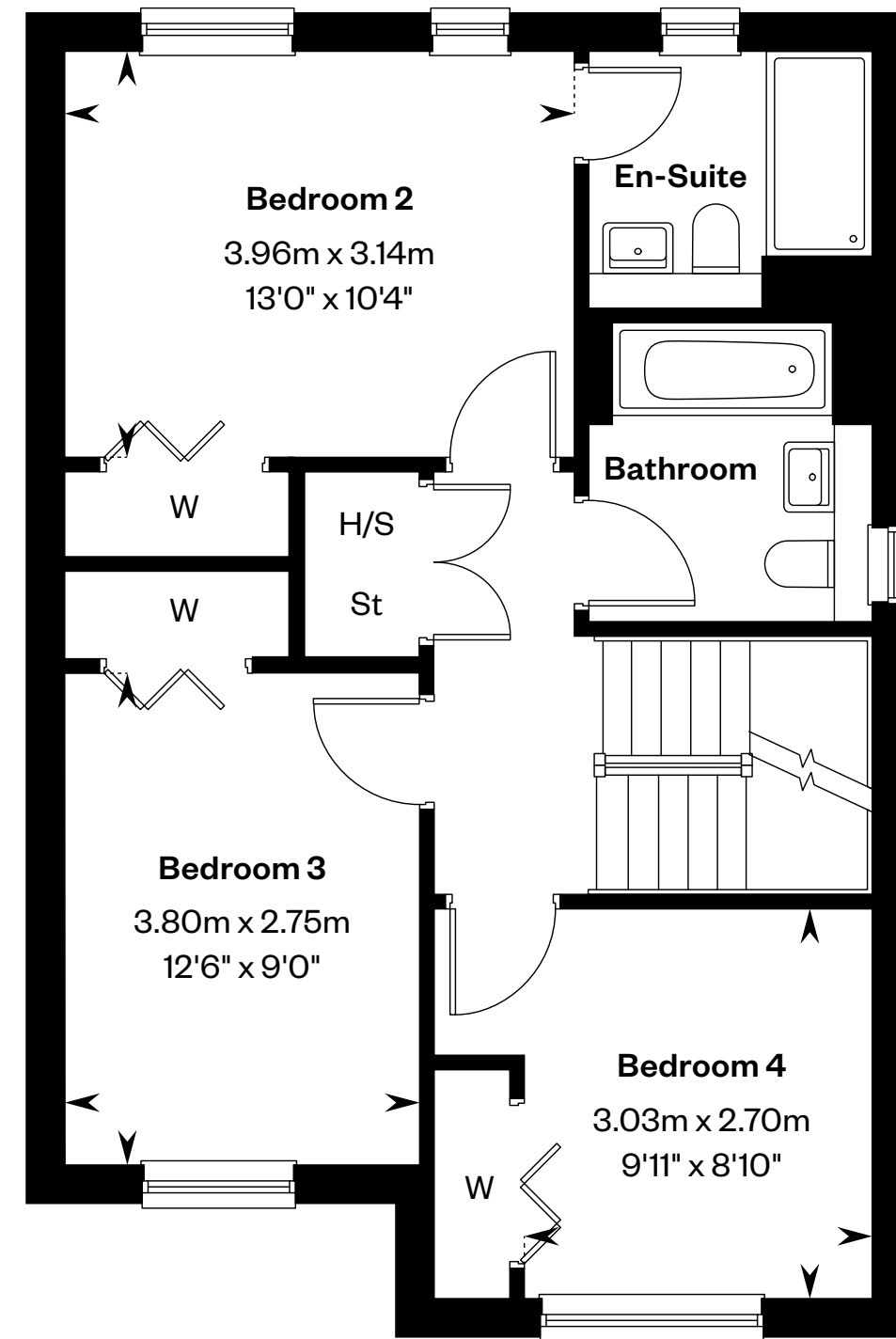
4 bedroom detached home

Plots 4, 18, 25 & 27 – as shown

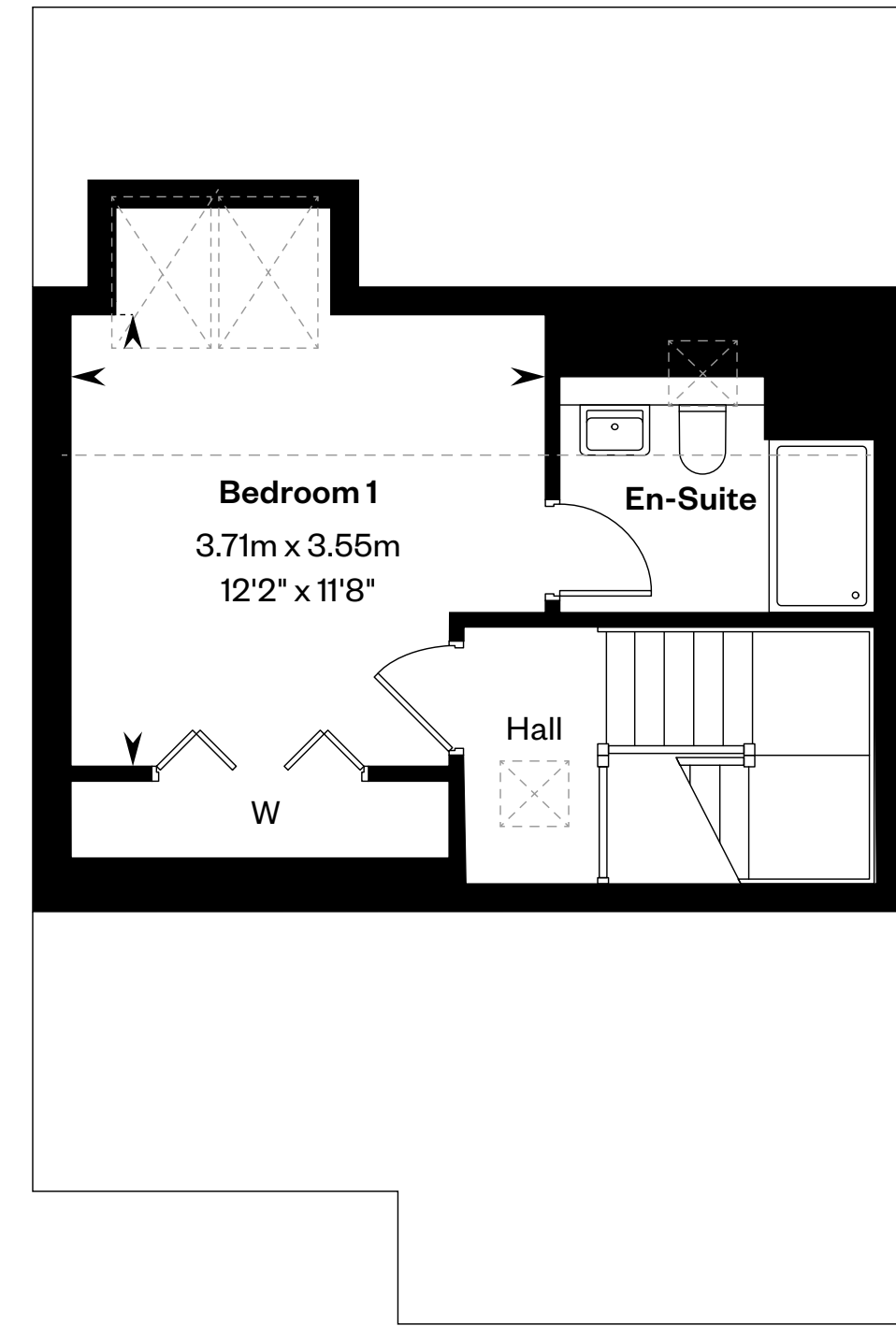
Plots 1, 22, 24, 32 & 33 – handed



Ground floor



First floor



Second floor

H/S: Heating source cupboard. St: Store cupboard. W: Wardrobe. ☒: Roof light/velux window. ----: Dotted lines denote reduced head height.

IMPORTANT NOTICE TO CUSTOMERS: The Consumer Protection from Unfair Trading Regulations 2008. Cala Homes (West) Limited operates a policy of continual product development and the specifications outlined in this brochure are indicative only. The computer generated images and photographs do not necessarily represent the actual finishings/elevation or treatments, landscaping, furnishings and fittings at this development. Information contained is accurate at date of publication on 11.03.26. See the main brochure for the full Consumer Protection statement.



The Bryce

4 bedroom detached home

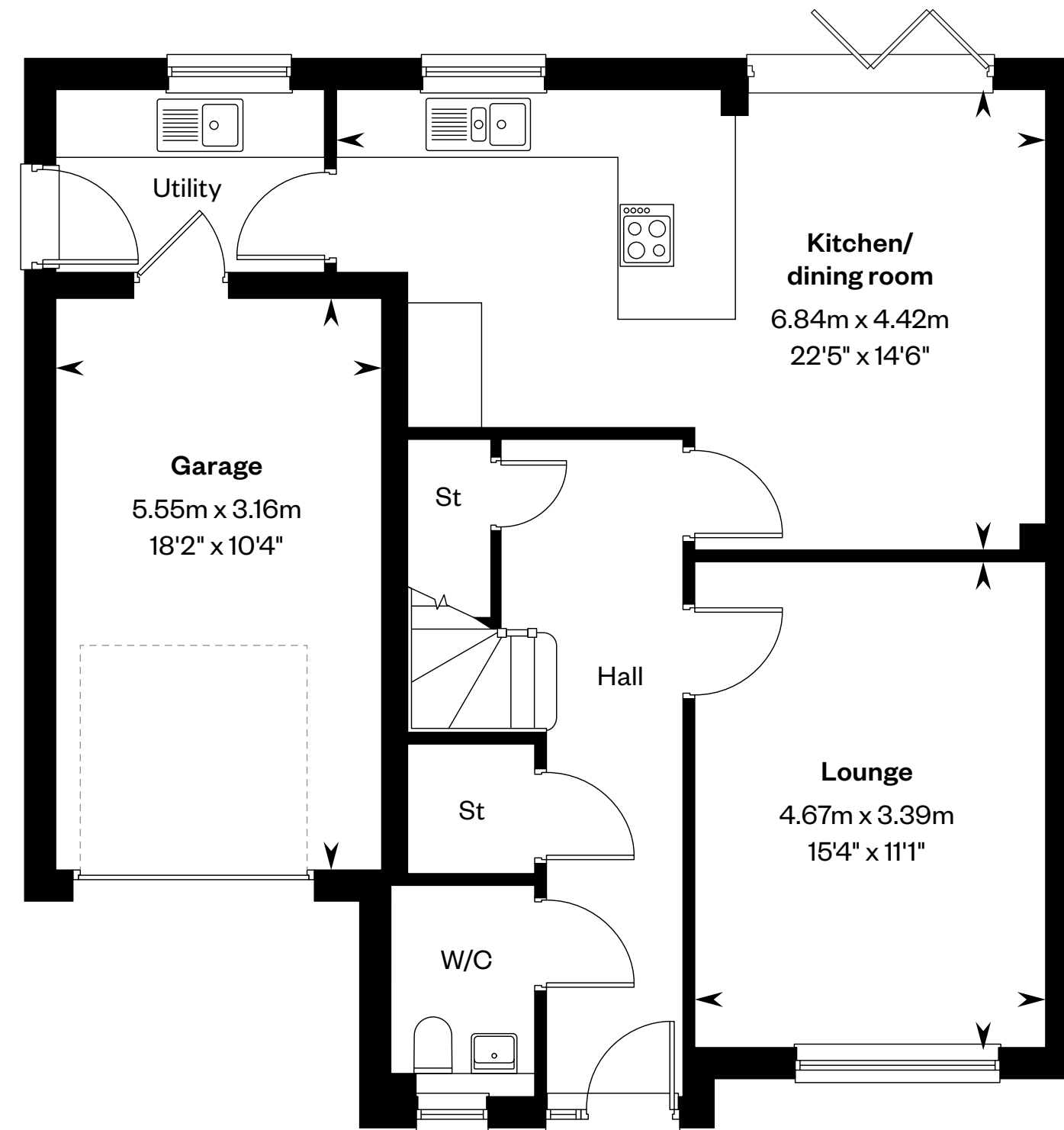


The Bryce

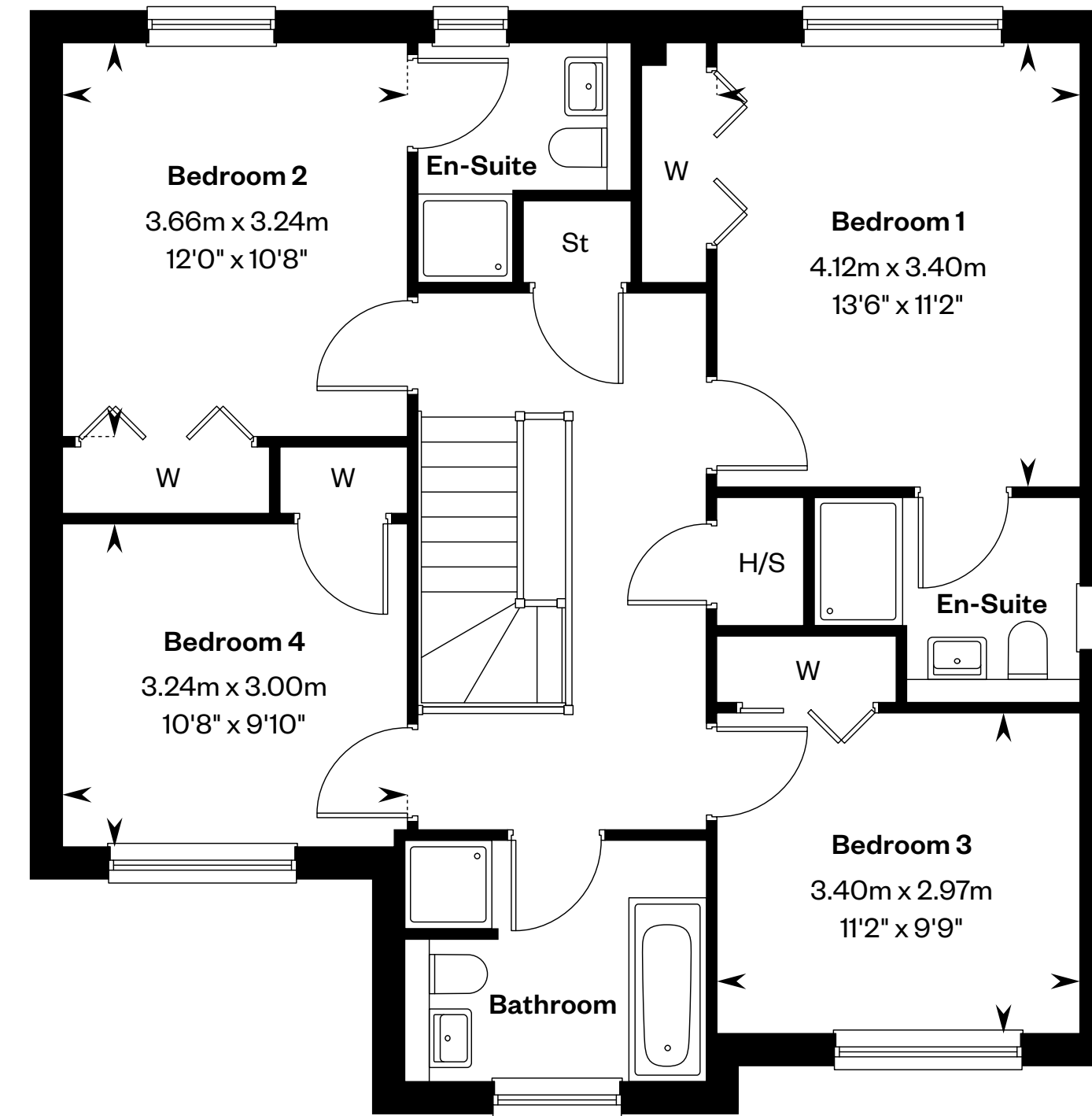
4 bedroom detached home

Plot 8 – as shown

Plot 35 – handed



Ground floor



First floor

H/S: Heating source cupboard. St: Store cupboard. W: Wardrobe.

IMPORTANT NOTICE TO CUSTOMERS: The Consumer Protection from Unfair Trading Regulations 2008. Cala Homes (West) Limited operates a policy of continual product development and the specifications outlined in this brochure are indicative only. The computer generated images and photographs do not necessarily represent the actual finishings/elevation or treatments, landscaping, furnishings and fittings at this development. Information contained is accurate at date of publication on 11.03.26. See the main brochure for the full Consumer Protection statement.



The Cleland

4 bedroom detached home



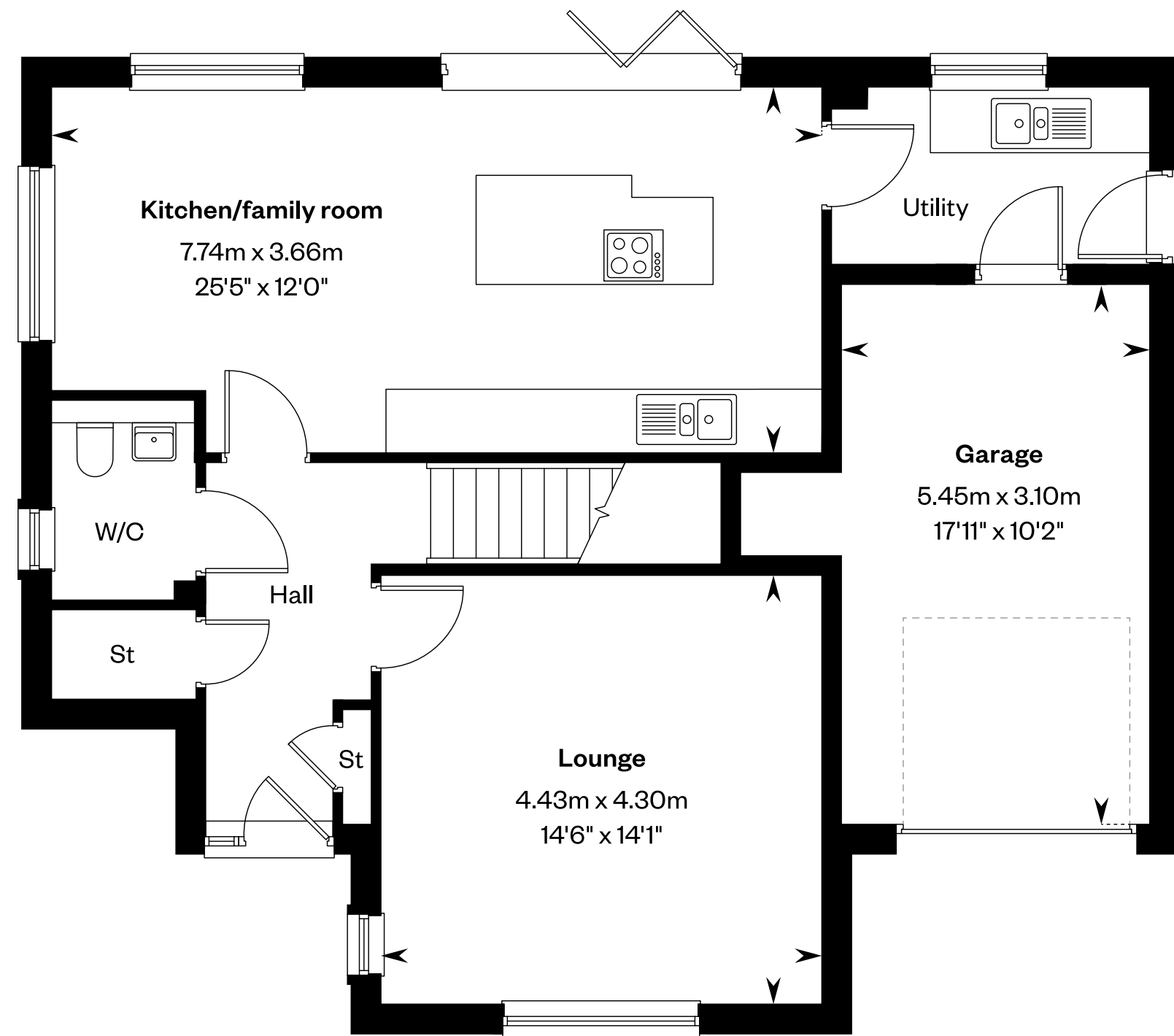
Computer Generated Image - The Cleland

The Cleland

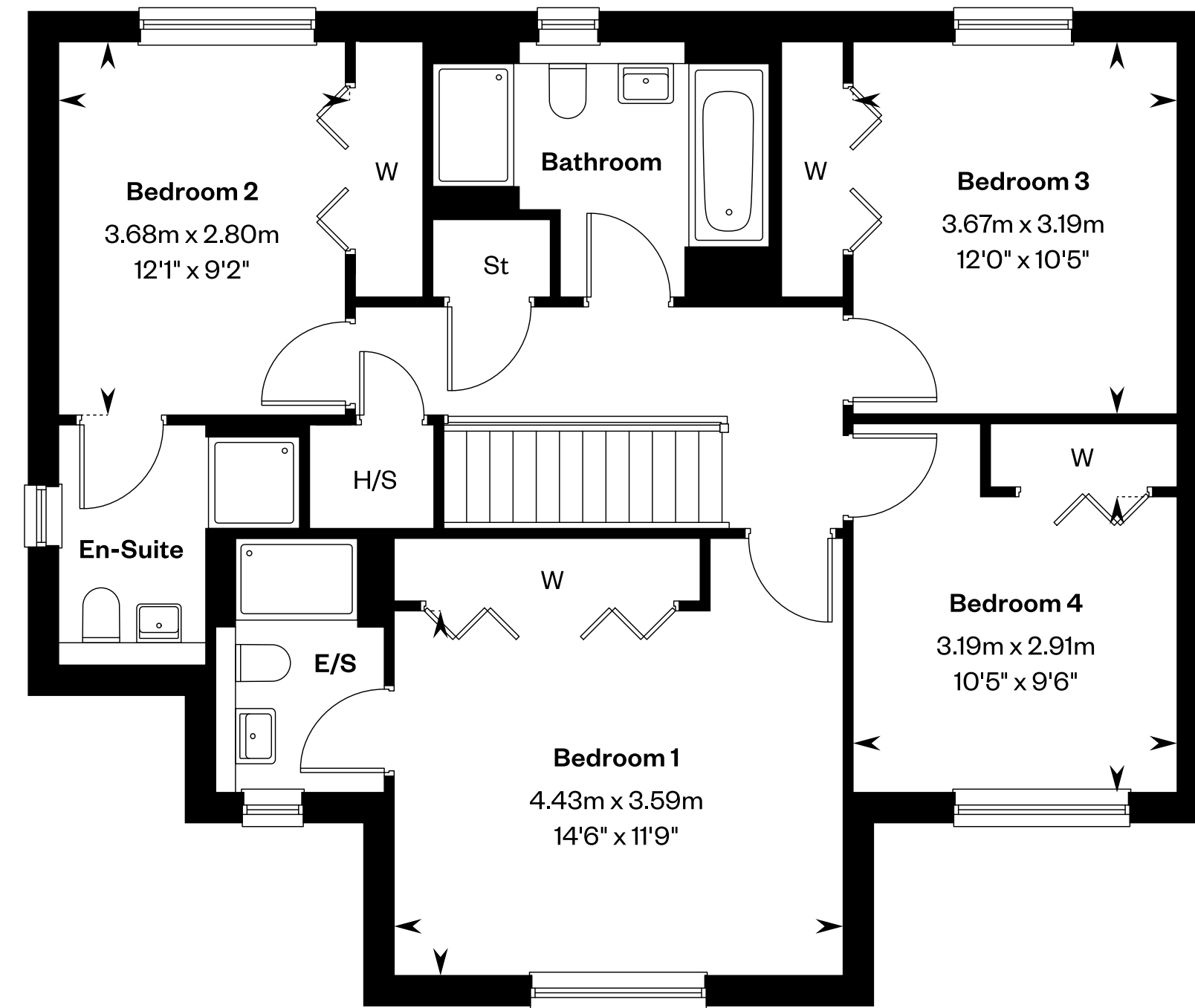
4 bedroom detached home

Plots 21 & 45 – as shown

Plot 20 – handed



Ground floor



First floor

E/S: En-Suite. St: Store cupboard. W: Wardrobe.

IMPORTANT NOTICE TO CUSTOMERS: The Consumer Protection from Unfair Trading Regulations 2008. Cala Homes (West) Limited operates a policy of continual product development and the specifications outlined in this brochure are indicative only. The computer generated images and photographs do not necessarily represent the actual finishings/elevation or treatments, landscaping, furnishings and fittings at this development. Information contained is accurate at date of publication on 11.03.26. See the main brochure for the full Consumer Protection statement.



The Crichton

5 bedroom detached home

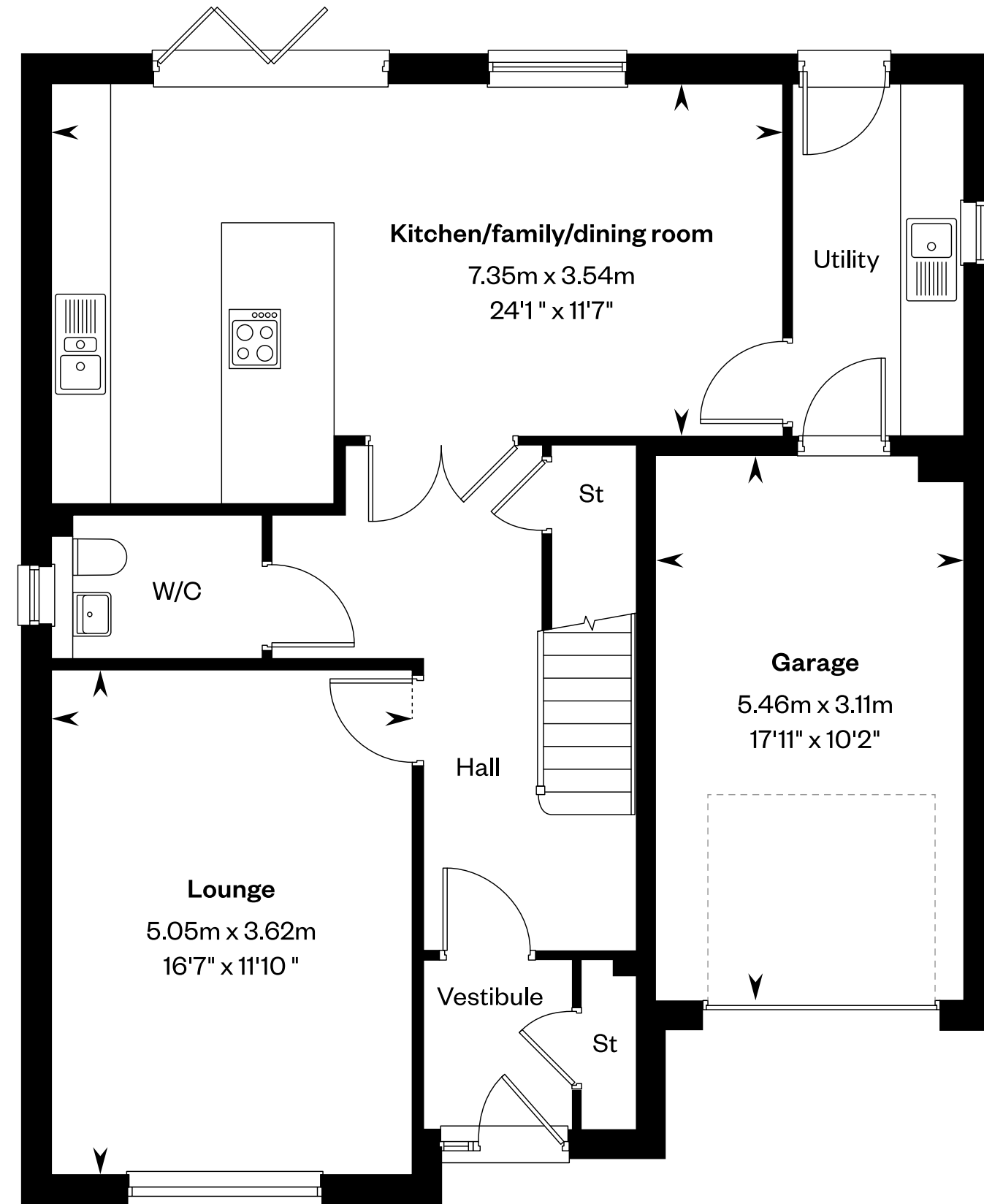


Computer Generated Image - The Crichton

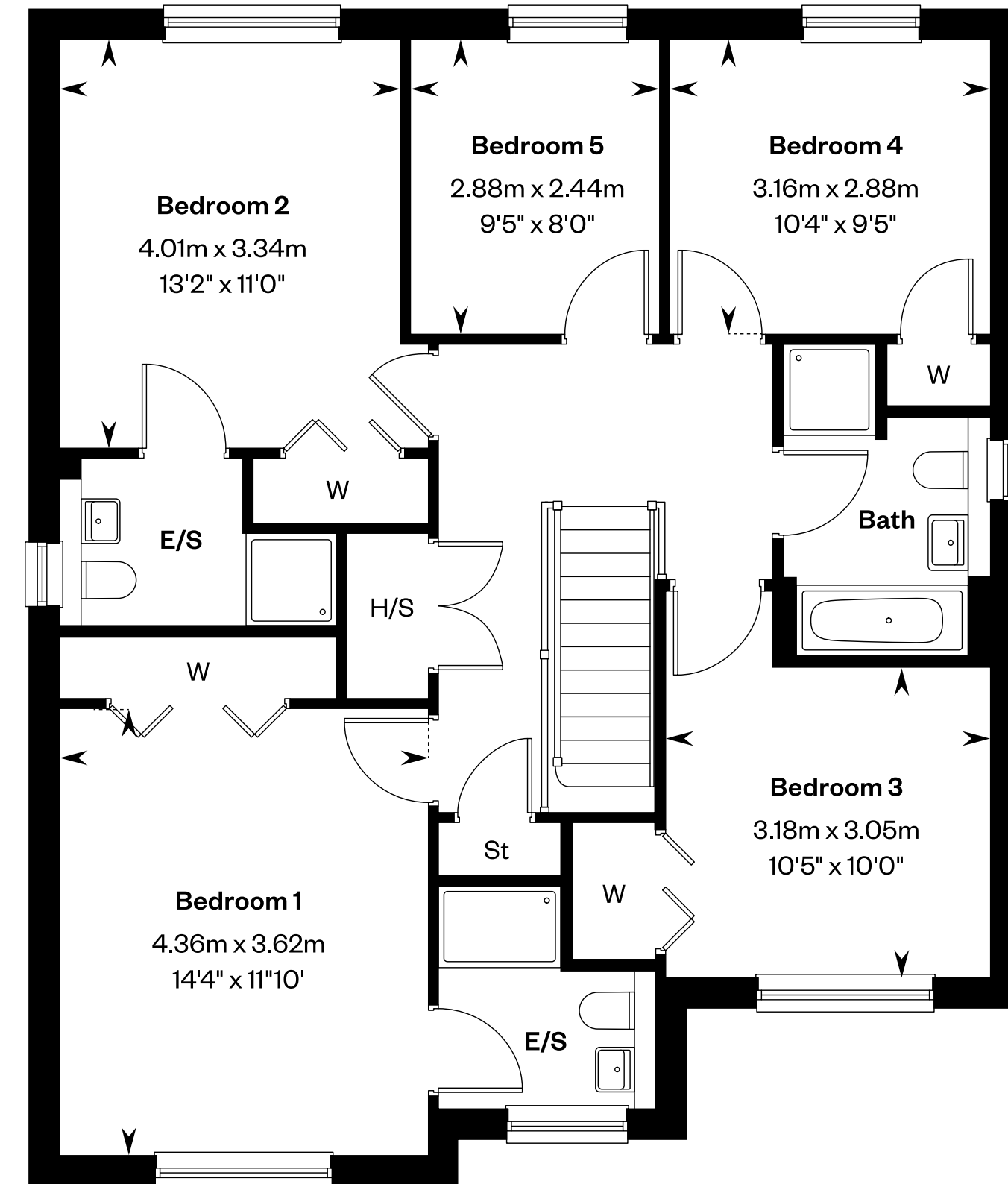
The Crichton

5 bedroom detached home

Plots 3, 15 & 46 – handed



Ground floor



First floor

H/S: Heating source cupboard. St: Store cupboard. W: Wardrobe.

IMPORTANT NOTICE TO CUSTOMERS: The Consumer Protection from Unfair Trading Regulations 2008. Cala Homes (West) Limited operates a policy of continual product development and the specifications outlined in this brochure are indicative only. The computer generated images and photographs do not necessarily represent the actual finishings/elevation or treatments, landscaping, furnishings and fittings at this development. Information contained is accurate at date of publication on 11.03.26. See the main brochure for the full Consumer Protection statement.



The Darroch

5 bedroom detached home



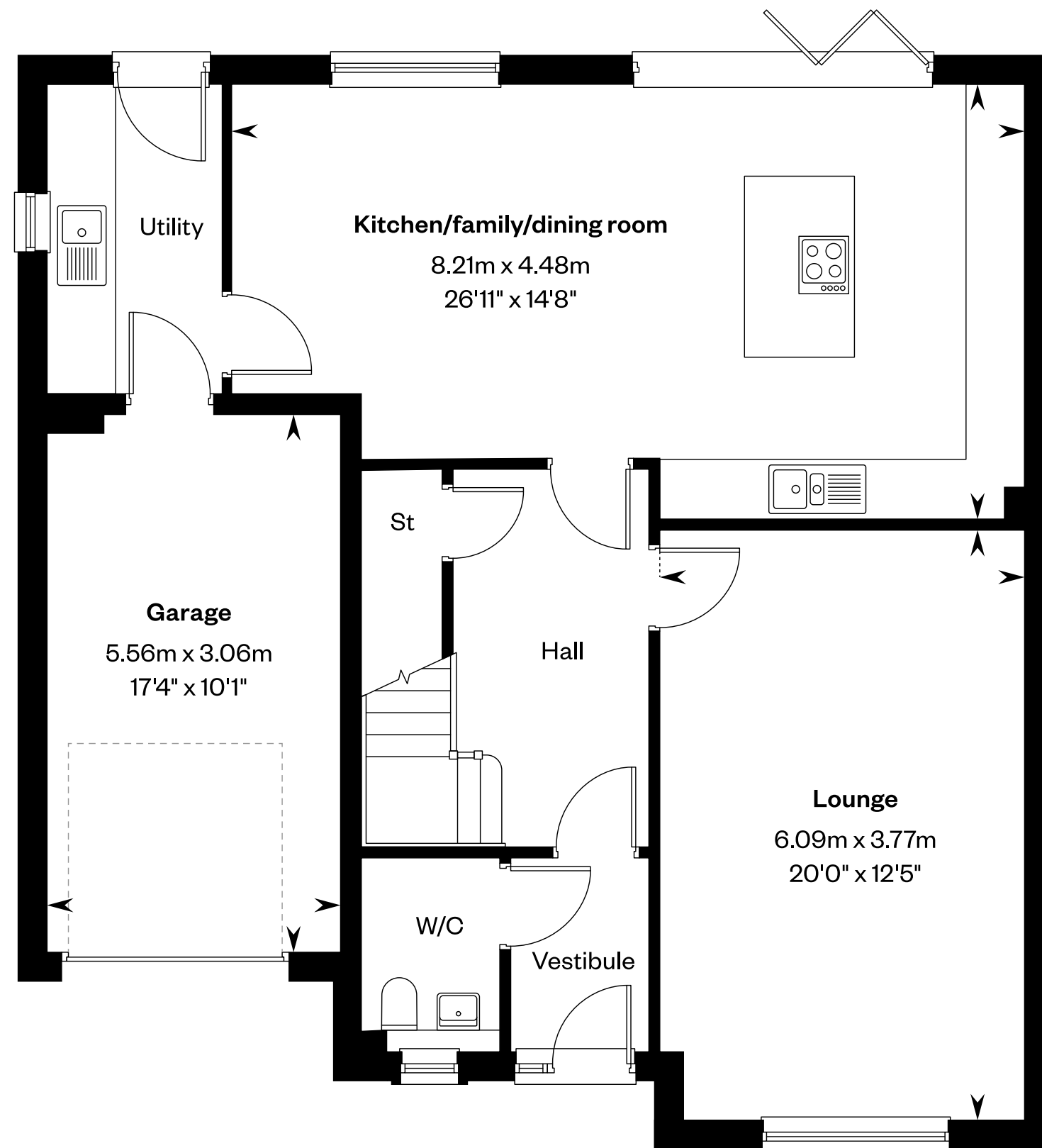
Computer Generated Image - The Darroch

The Darroch

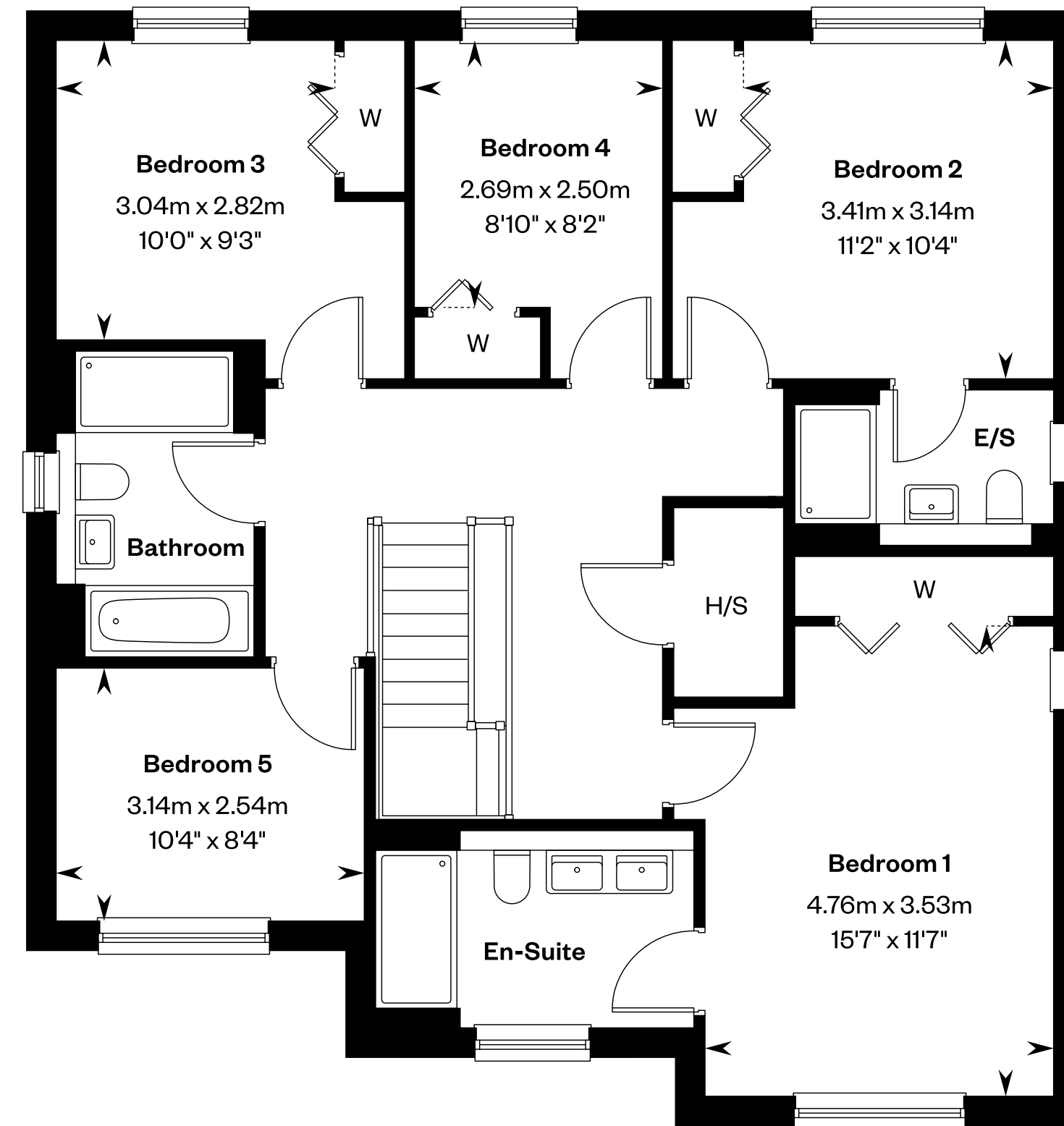
5 bedroom detached home

Plots 7, 19 & 26 – as shown

Plot 23 – handed



Ground floor



First floor

E/S: En-Suite. H/S: Heating source cupboard. St: Store cupboard. W: Wardrobe.

IMPORTANT NOTICE TO CUSTOMERS: The Consumer Protection from Unfair Trading Regulations 2008. Cala Homes (West) Limited operates a policy of continual product development and the specifications outlined in this brochure are indicative only. The computer generated images and photographs do not necessarily represent the actual finishings/elevation or treatments, landscaping, furnishings and fittings at this development. Information contained is accurate at date of publication on 11.03.26. See the main brochure for the full Consumer Protection statement.



The Evan

5 bedroom detached home
with study

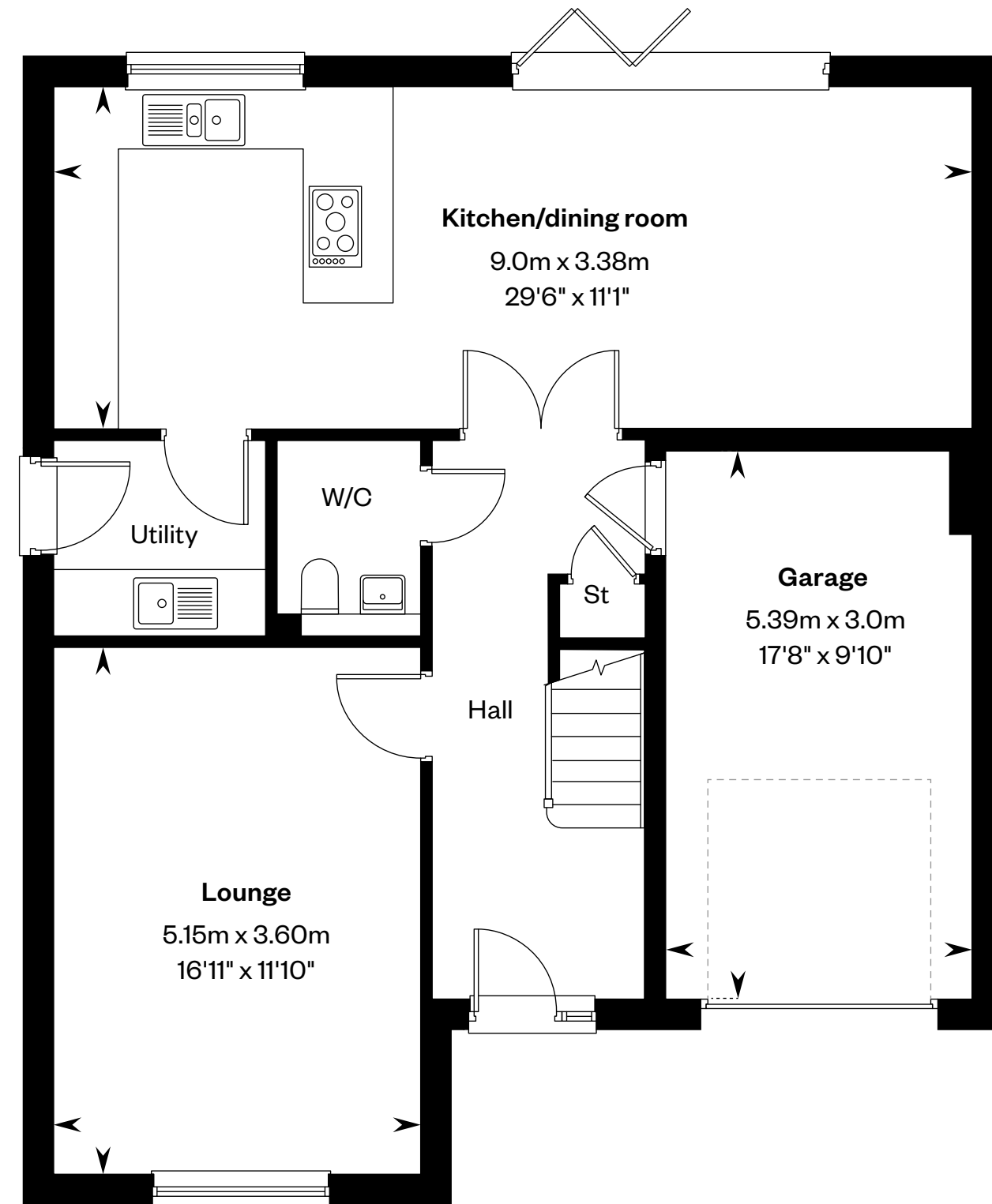


The Evan

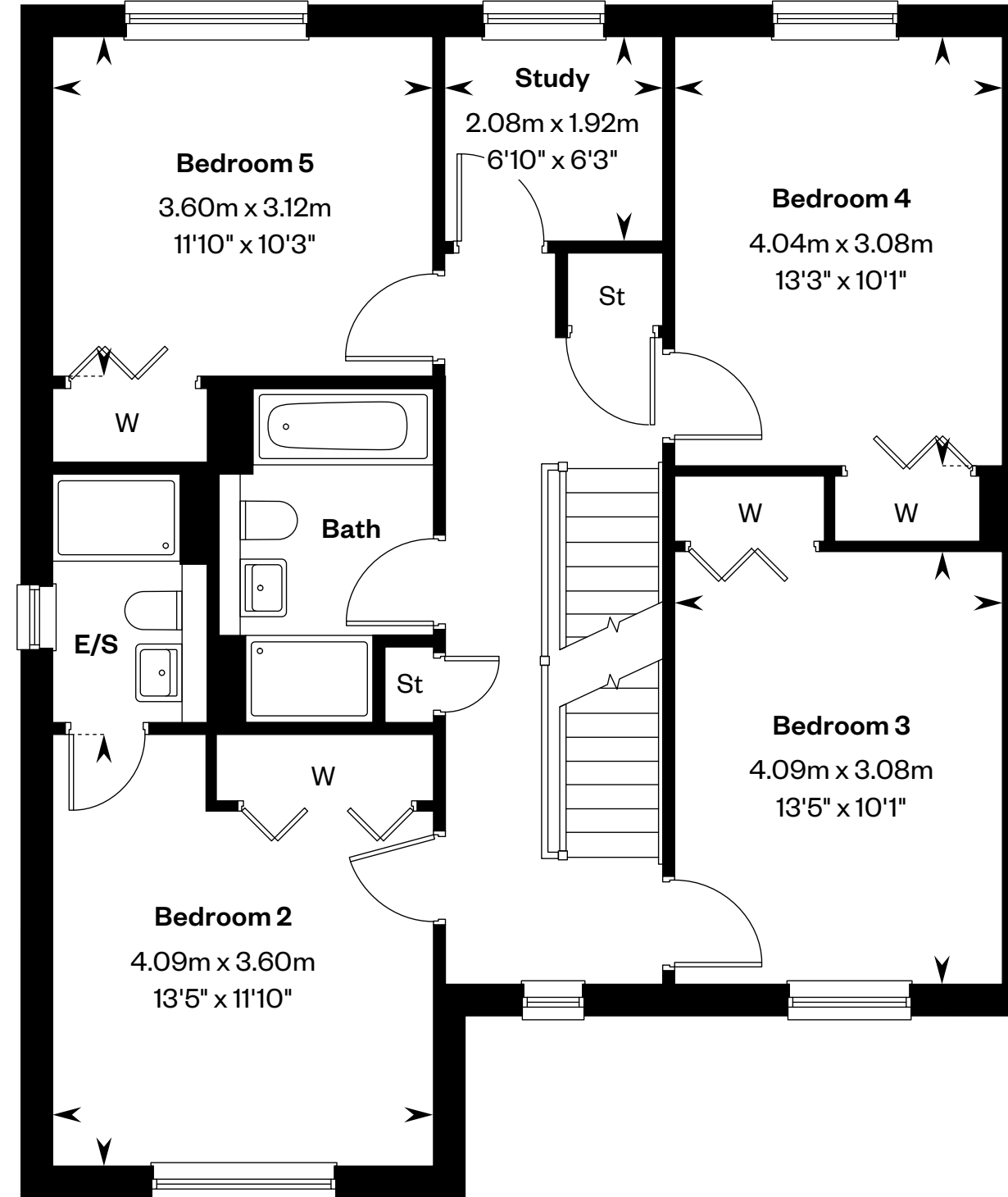
5 bedroom detached home with study

Plot 11 – as shown

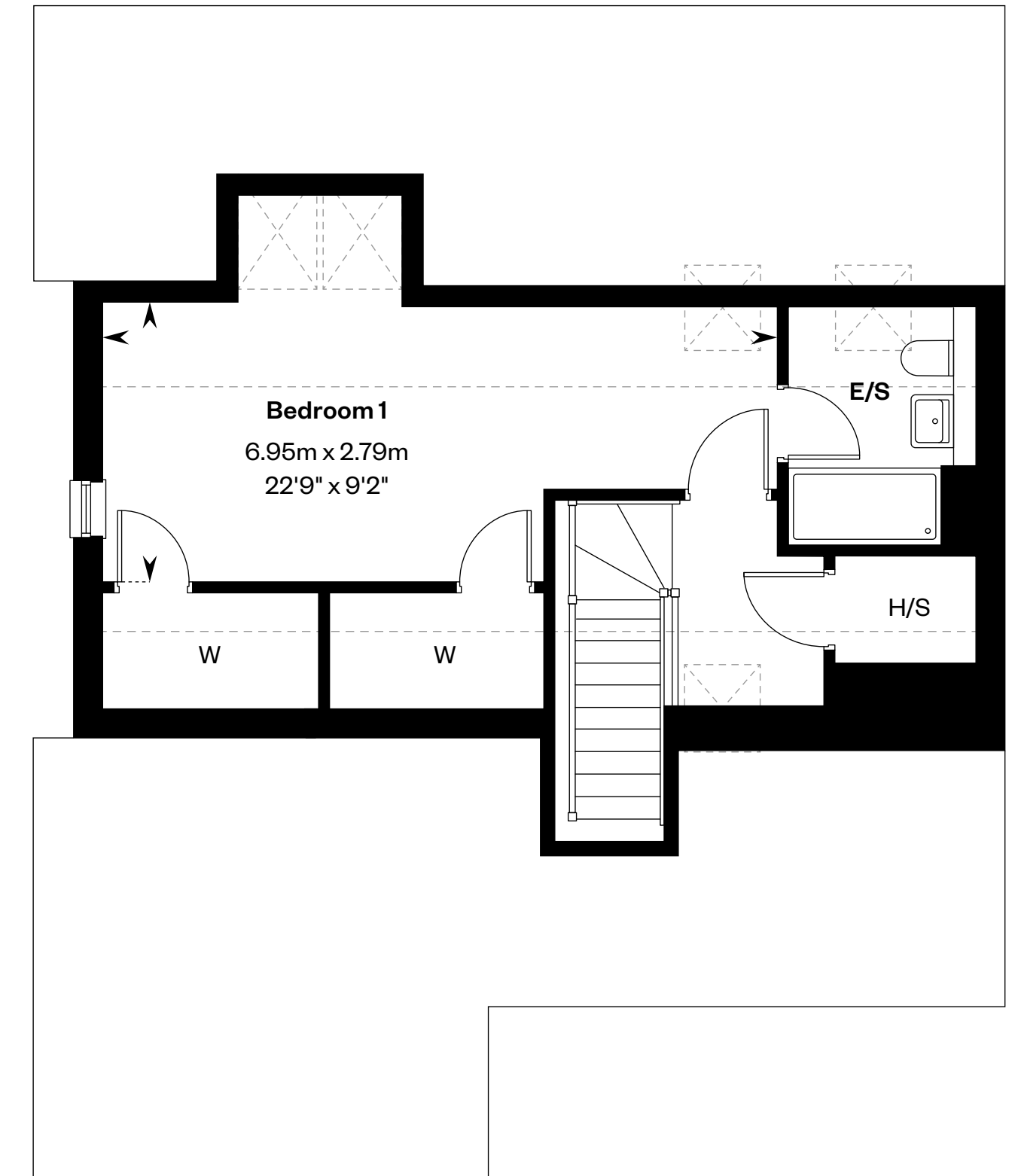
Plots 5 & 12 – handed



Ground floor



First floor



Second floor

E/S: En-Suite. H/S: Heating source cupboard. St: Store cupboard. W: Wardrobe. ☒: Roof light/velux window. ----: Dotted lines denote reduced head height.

IMPORTANT NOTICE TO CUSTOMERS: The Consumer Protection from Unfair Trading Regulations 2008. Cala Homes (West) Limited operates a policy of continual product development and the specifications outlined in this brochure are indicative only. The computer generated images and photographs do not necessarily represent the actual finishings/elevation or treatments, landscaping, furnishings and fittings at this development. Information contained is accurate at date of publication on 11.03.26. See the main brochure for the full Consumer Protection statement.



The Lewis

5 bedroom detached home

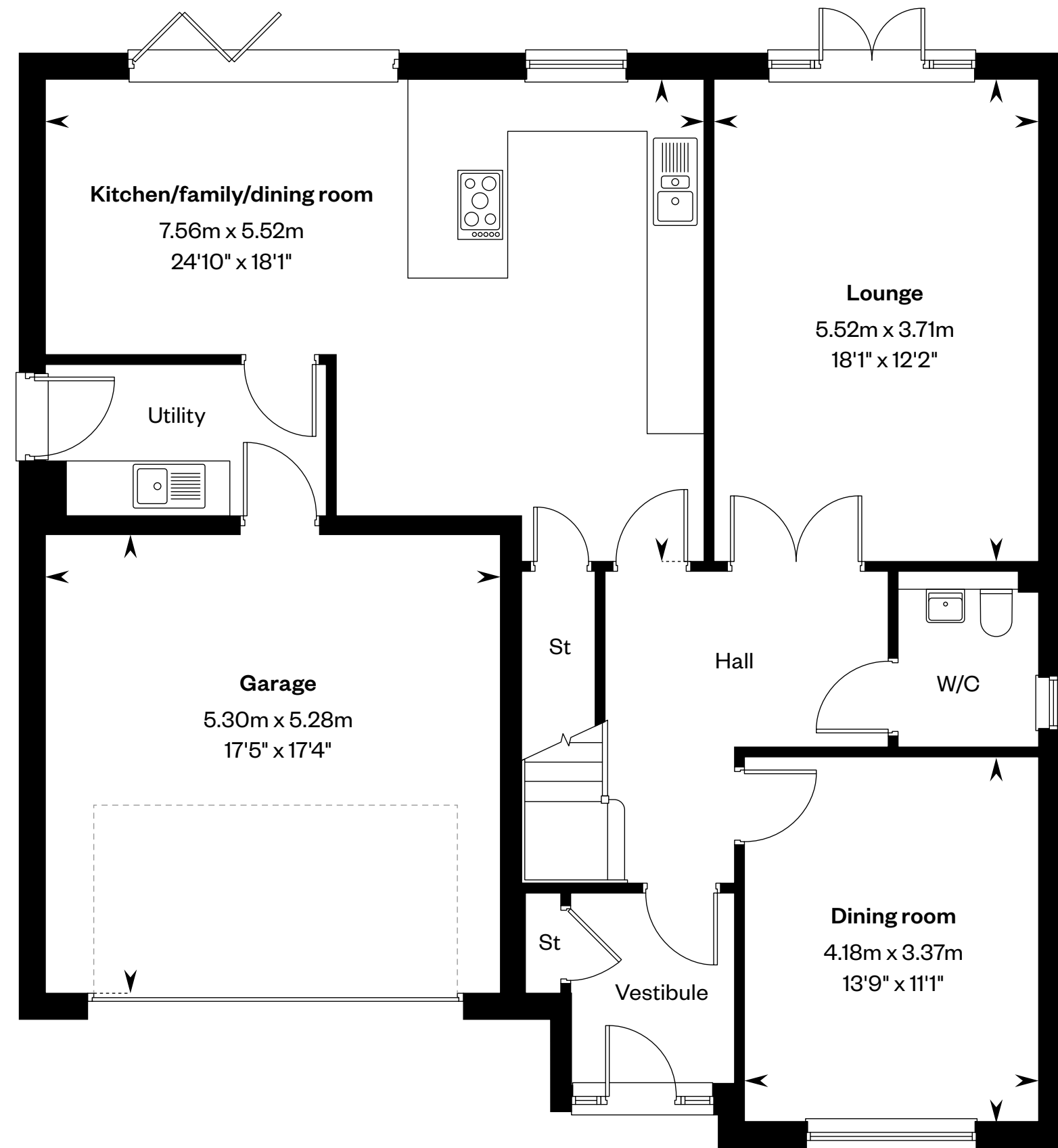


The Lewis

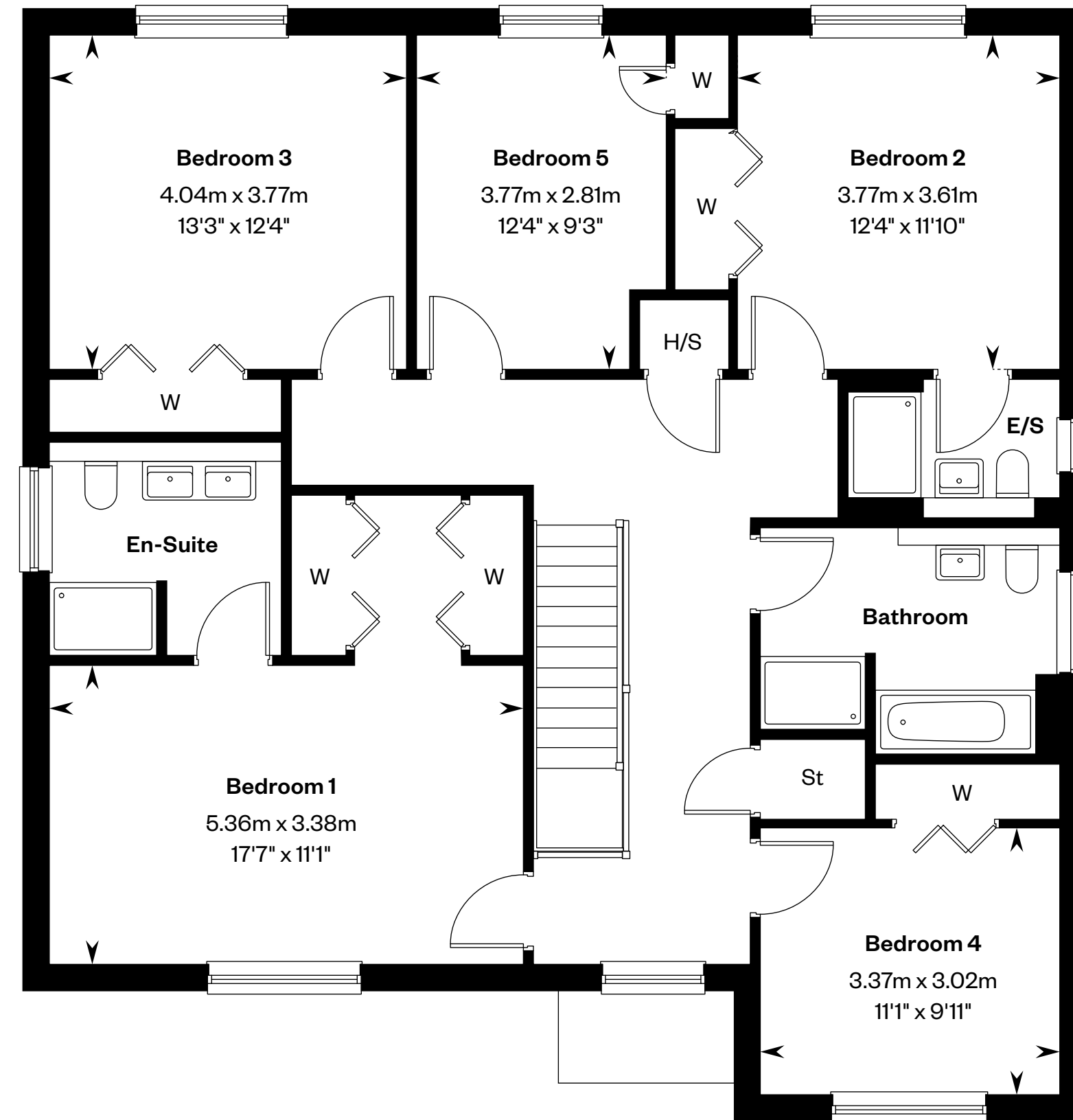
5 bedroom detached home

Plots 6 & 13 – as shown

Plot 10 – handed



Ground floor



First floor

E/S: En-Suite. H/S: Heating source cupboard. St: Store cupboard. W: Wardrobe.

IMPORTANT NOTICE TO CUSTOMERS: The Consumer Protection from Unfair Trading Regulations 2008. Cala Homes (West) Limited operates a policy of continual product development and the specifications outlined in this brochure are indicative only. The computer generated images and photographs do not necessarily represent the actual finishings/elevation or treatments, landscaping, furnishings and fittings at this development. Information contained is accurate at date of publication on 11.03.26. See the main brochure for the full Consumer Protection statement.



The Logan

5 bedroom detached home

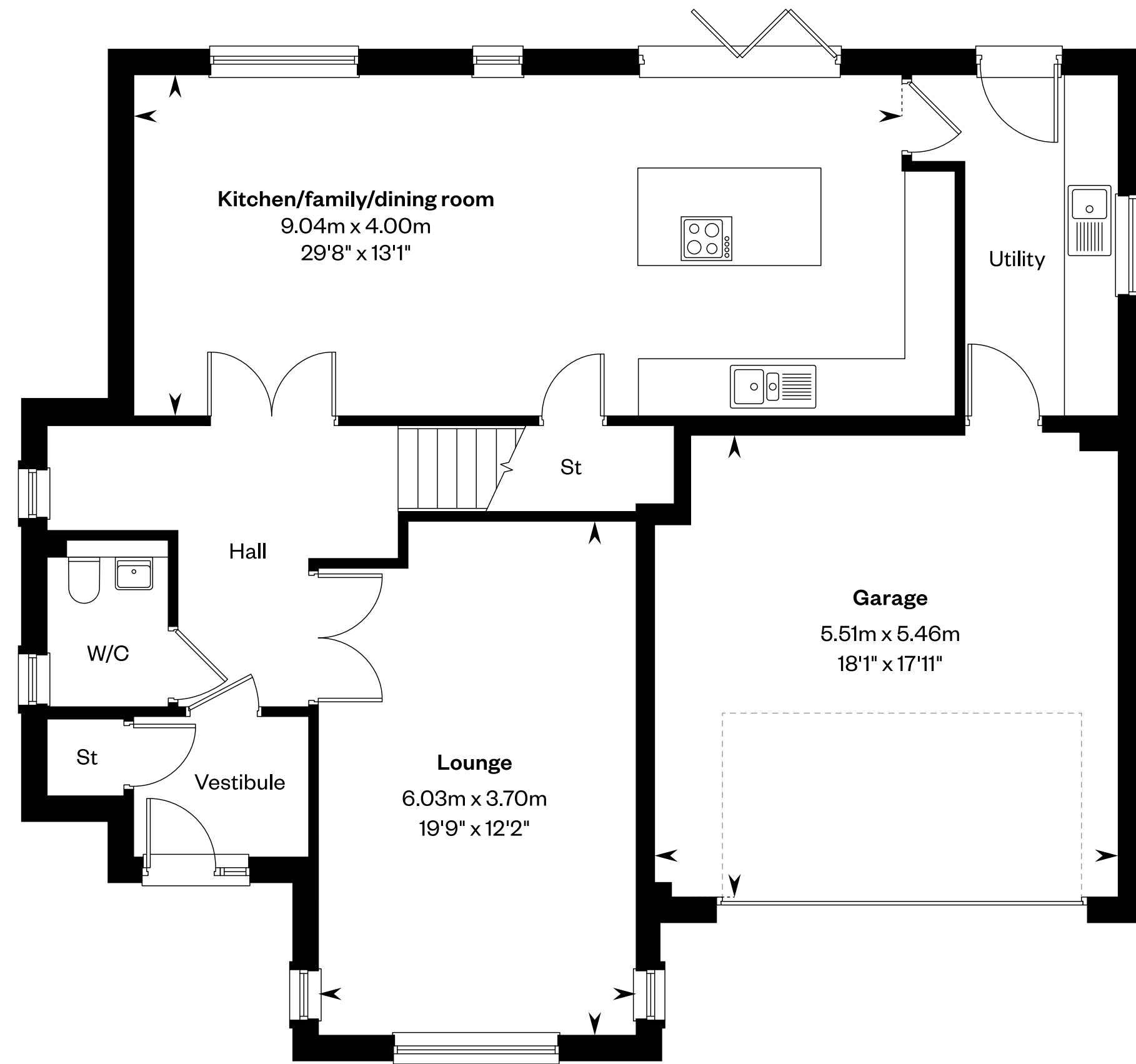


The Logan

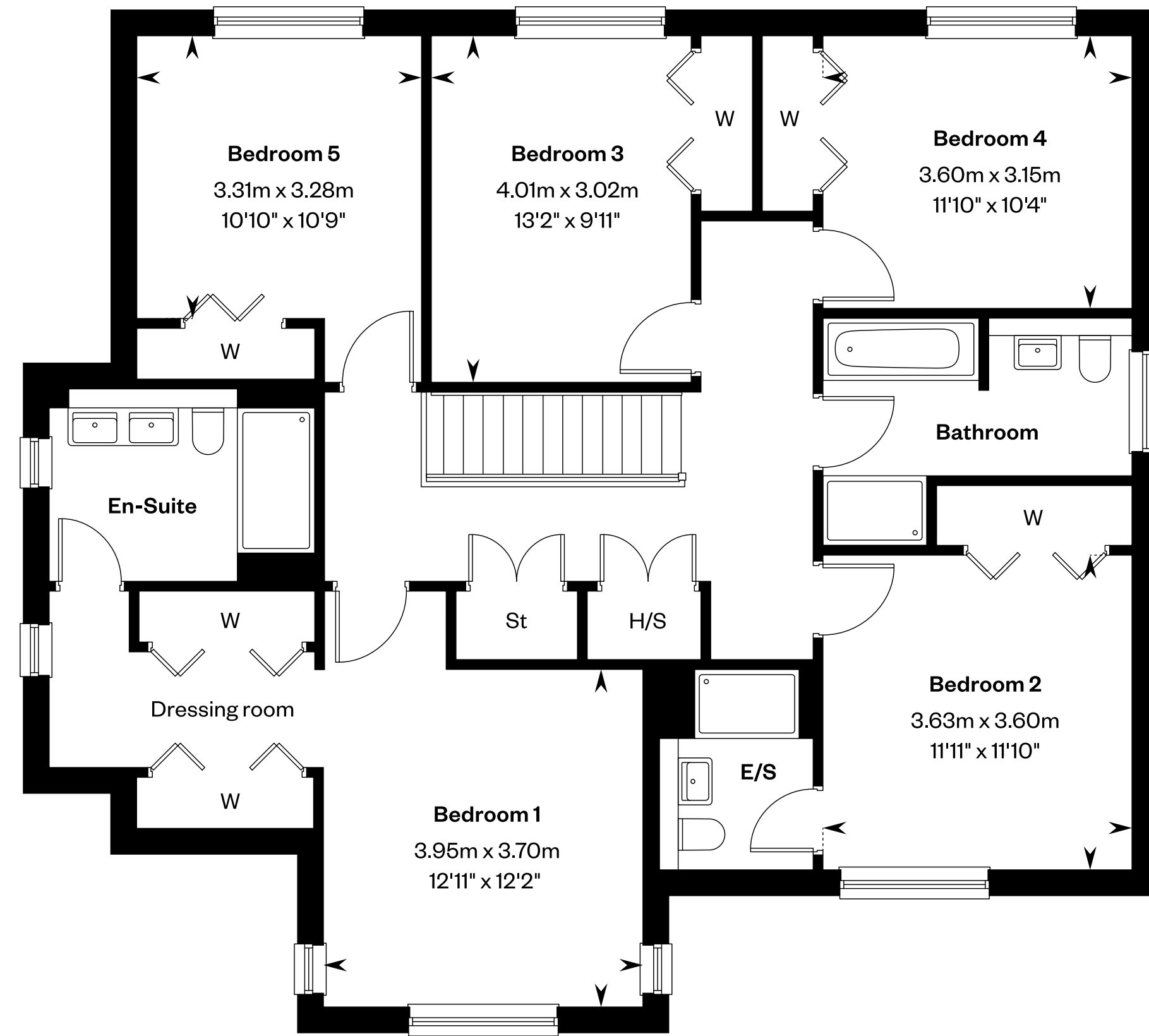
5 bedroom detached home

Plots 9 & 14 – as shown

Plot 2 – handed



Ground floor



First floor

E/S: En-Suite. H/S: Heating source cupboard. St: Store cupboard. W: Wardrobe.

IMPORTANT NOTICE TO CUSTOMERS: The Consumer Protection from Unfair Trading Regulations 2008. Cala Homes (West) Limited operates a policy of continual product development and the specifications outlined in this brochure are indicative only. The computer generated images and photographs do not necessarily represent the actual finishings/elevation or treatments, landscaping, furnishings and fittings at this development. Information contained is accurate at date of publication on 11.03.26. See the main brochure for the full Consumer Protection statement.