



Khartoum Road, SW17

£450,000

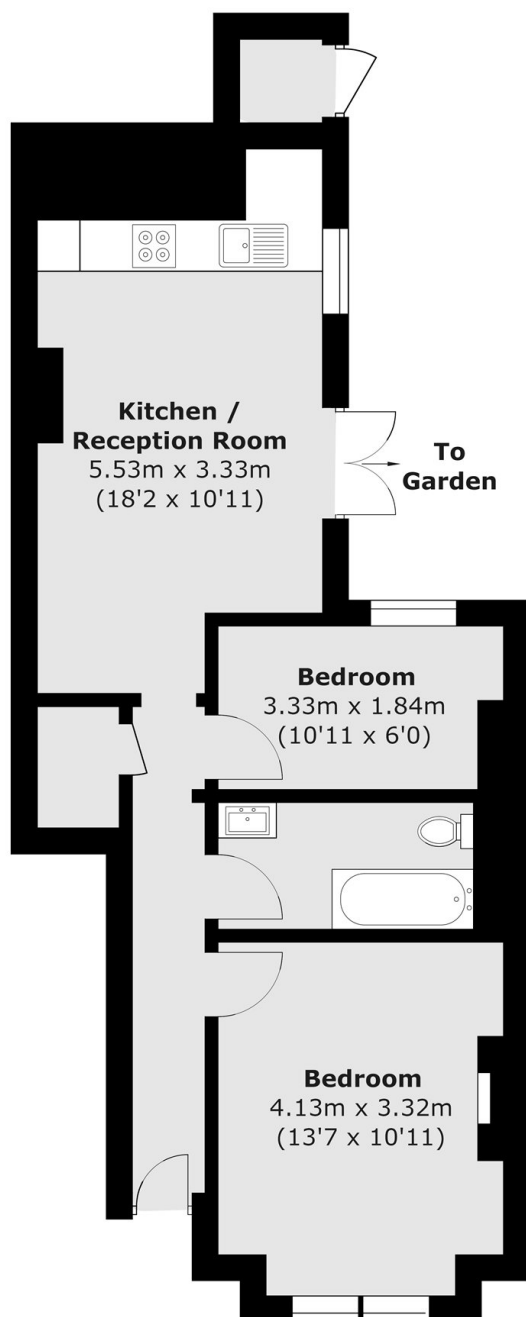
An immaculate and bright maisonette positioned in the heart of Tooting having been lovingly maintained by the current owners. The property opens onto a superb open-plan kitchen/reception room with a fitted kitchen with ample space for dining, two double bedrooms a stylish three piece family bathroom and french doors opening onto a private south facing private garden.

Khartoum Road is a quiet tree lined residential street moments away from central Tooting with a vast array of shops, bars and restaurants within walking distance. Easy access to the City can be found via Tooting Broadway Underground station which is a short stroll away.

Features

- Two Bedrooms
- Own Front Door
- Private Garden
- Immaculate Interior
- Desirable Location
- Open-Plan Kitchen

Khartoum Road, London, SW17



Total area (approx.): 53.6 sq. m (576.9 sq. ft)
External Store area (approx.): 1.1 sq. m (11.8 sq. ft)