



ASPIRE RESIDENTIAL

Service | Expertise | Accountability



Franklin Road, Worthing, BN13 2UA

Asking Price £249,995

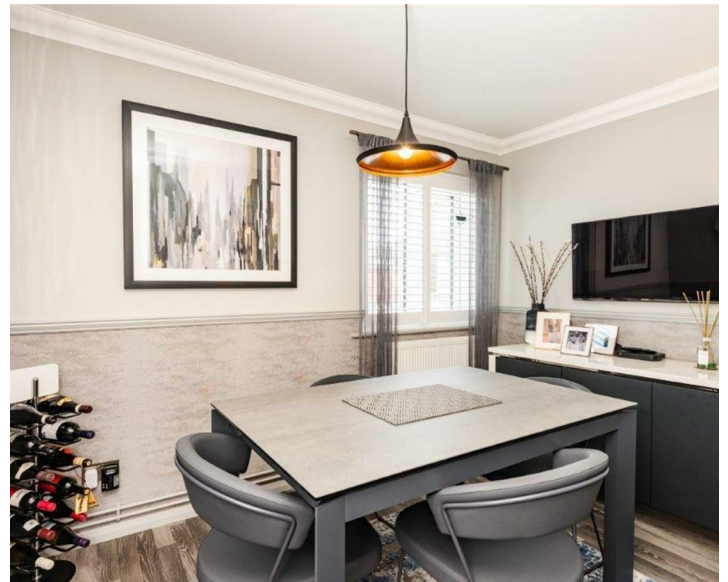
This immaculately presented home offers a superb combination of style, comfort and practicality, all accessed via its own private entrance. The bright and welcoming living room enjoys a pleasant southerly aspect, creating an inviting space to relax or entertain. A real highlight is the exceptional modern kitchen, finished with granite worktops and an impressive range of integrated appliances, providing both elegance and functionality. The accommodation is complemented by a luxurious, contemporary shower room and two well proportioned rooms, one benefitting from quality fitted furniture. Further features include double glazing, gas fired central heating with a recently installed boiler situated in the boarded loft accessed by a pull down ladder, and a long lease offering peace of mind. Outside, there is the added convenience of an allocated parking space alongside visitor bays. Offered with vacant possession and presented in truly move in ready condition, this is an excellent opportunity for buyers seeking quality and ease of living.



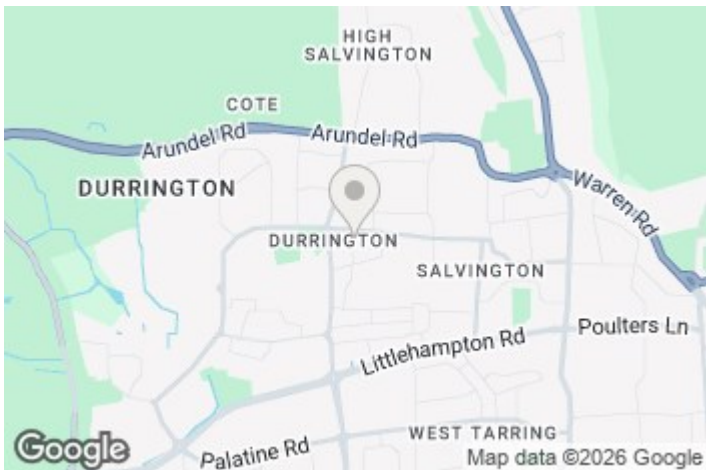
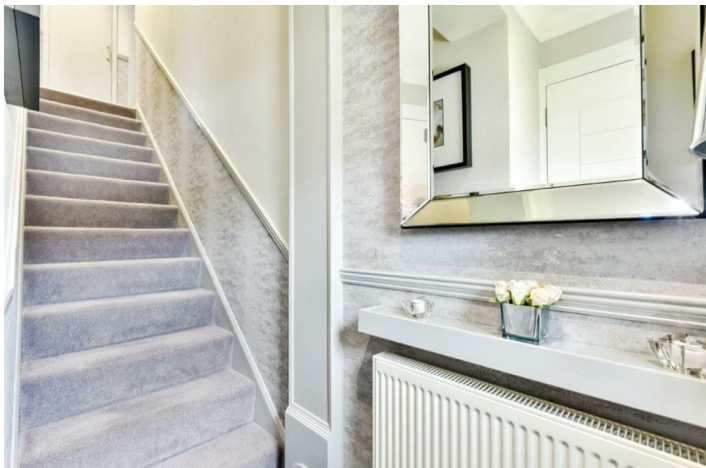
Council Tax Band: C

- Sold with vacant possession
- Immaculate, move in ready condition
- Luxury modern shower room
- Double glazing and gas heating
- Allocated parking plus visitor bays

- Own private entrance
- Stunning contemporary fitted kitchen
- Bright south facing living room
- Recently installed combination boiler
- Long 173 year lease



Worthing, a charming seaside town on the south coast of England, strikes a balance between Victorian elegance and contemporary energy. Its extensive pebble beach, historic pier and scenic promenade make for a quintessential coastal experience. A thriving cultural scene, including theatres, galleries and local events, brings vibrancy to the town. With lush green spaces such as Beach House Park and Highdown Gardens, plus a bustling town centre full of shops, restaurants and entertainment, Worthing is a well-connected, welcoming community with a rich history and enduring appeal.

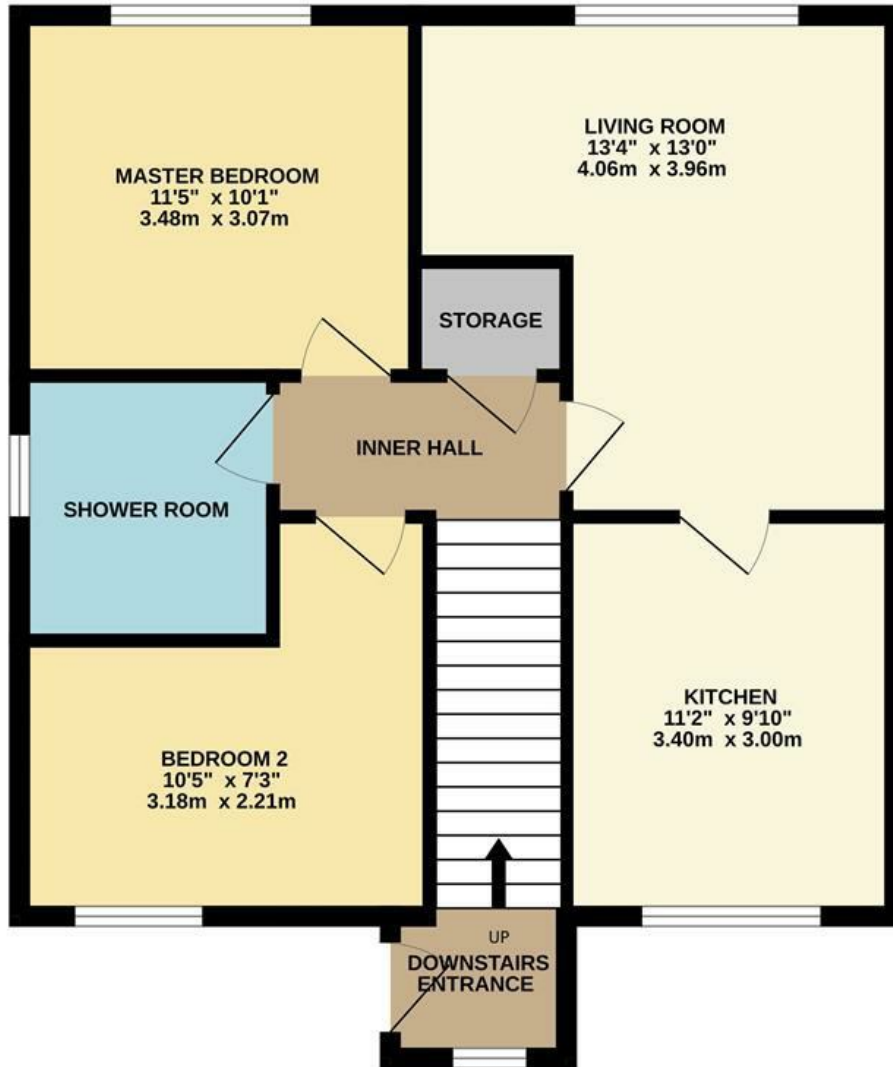


EPC Rating:
C

Energy Efficiency Rating		
	Current	Potential
Very energy efficient - lower running costs		
(92 plus) A		
(81-91) B		
(69-80) C	79	79
(55-68) D		
(39-54) E		
(21-38) F		
(1-20) G		
Not energy efficient - higher running costs		
England & Wales	EU Directive 2002/91/EC	

GROUND FLOOR

Total Floor Area: 57 sq M / 613 sq F



Whilst every attempt has been made to ensure the accuracy of the floorplan contained here, measurements of doors, windows, rooms and any other items are approximate and no responsibility is taken for any error, omission or mis-statement. This plan is for illustrative purposes only and should be used as such by any prospective purchaser. The services, systems and appliances shown have not been tested and no guarantee as to their operability or efficiency can be given.
Made with Metropix ©2025

Aspire Residential | Goring-by-Sea

28 Goring Road
Goring-by-Sea
Worthing
BN12 4AD
Telephone: 01903 259 961
Email: info@aspireresidential.co.uk



Aspire Residential | Durrington / Salvington

5 Selden Parade
Salvington Road
Worthing
BN13 2HL
Telephone: 01903 910 424
Email: enquiries@aspireresidential.co.uk

Aspire Residential and Aspire Residential Estate Agents are trading names of Aspire Residential Sales Limited, a Company registered in England and Wales with registration number 11659289. VAT No. 317450614

IMPORTANT NOTICE TO PURCHASERS: We endeavour to make our sales particulars accurate and reliable, however, they do not constitute or form part of an offer or any contract and none is to be relied upon as statements of representation or fact. The services, systems and appliances listed in this specification have not been tested by us and no guarantees as to their operating ability or efficiency are given. All measurements have been taken as a guide to prospective buyers only, and are not precise. If you require clarification or further information on any points, please contact us, especially if you are traveling some distance to view.