



The Grove, Marton-In-Cleveland Middlesbrough TS7 8AF

welcome to

The Grove, Marton-In-Cleveland Middlesbrough

Nestled within the highly sought-after area of The Grove in Marton, Roseland House is an exceptional five-bedroom detached residence, offering an abundance of space, luxury, and versatility for modern family living

Hallway

Entered via traditional style door, staircase to first floor, storage cupboard, traditional style radiators, herringbone parquet flooring throughout.

Dining Room

16' 11" x 11' 11" (5.16m x 3.63m)
UPVC double glazed bi-folding door leading into garden, radiator.

Lounge

18' 11" x 13' 1" (5.77m x 3.99m)
UPVC double glazed windows to rear and side, cast iron multi fuel log burner with decorative surround, TV and telephone point.

Impressive Kitchen / Diner

12' 7" x 25' 8" (3.84m x 7.82m)
Range of wall and base units with under floor heating, step down leading into family area which creates an open plan layout, panoramic bi-folding doors that open onto a raised patio, range of integral fixed units.

Playroom

18' 7" x 14' (5.66m x 4.27m)
UPVC double glazed windows to side, UPVC double glazed doors leading to rear garden, staircase to bedroom above the garage.

First Floor Landing

Staircase from hallway

Beautiful Master Suite

19' x 18' 10" (5.79m x 5.74m)
Gives hotel style luxury, large vaulted window which overlooks the vast garden creating a light filled room. radiator

Dressing Room

fitted wardrobes, UPVC Double Glazed window to the front.

Luxurious En Suite

Finished to a good standard, double walk in shower, floating wash hand basin, toilet, heated chrome towel rail, sky light window

Bedroom 2

20' 1" x 20' 1" (6.12m x 6.12m)
UPVC double glazed window to front, walk in wardrobe, radiator.

Bedroom 3

15' 3" x 15' 1" (4.65m x 4.60m)
UPVC double glazed window to side and rear, radiator, fitted wardrobe.

Bedroom 4

16' 8" x 13' (5.08m x 3.96m)
UPVC double glazed window to rear, radiator.

Bedroom 5

10' 7" x 12' 3" (3.23m x 3.73m)
UPVC double glazed window, radiator.

Luxury Bathroom

Free standing bath, floating WC, part tiled walls, wash hand basin with understorage and mixer tap, wall mounted TV over the bath, double walk in shower.

Bathroom 2

Bath, WC, wash hand basin with mixer tap, UPVC double glazed window to front.





Front Garden

Well maintained gardens, multi car driveway leading onto double garage with gated access.

Rear Garden

Landscaped garden, outdoor lighting, range of shrubs and feature trees, well maintained lawns, picturesque view from the rear of the property.

Double Garage



view this property online mannersandharrison.co.uk/Property/MAR112170



welcome to

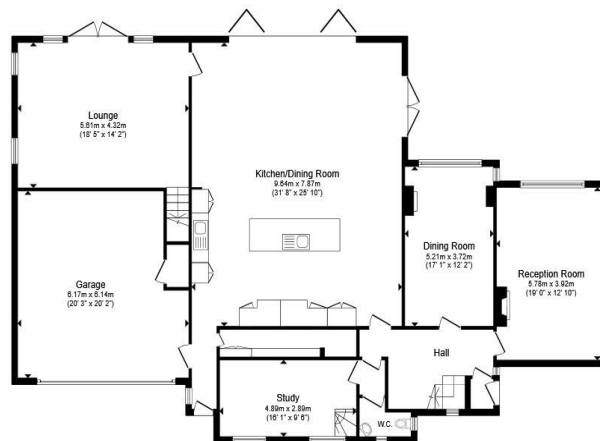
The Grove, Marton-In-Cleveland Middlesbrough

- LUXURY HOME
- GATED ACCESS
- IMPRESSIVE KITCHEN/DINER
- FIVE LARGE BEDROOMS
- DOUBLE GARAGE & MULTIPLE CAR DRIVEWAY

Tenure: Freehold EPC Rating: Awaited

Council Tax Band: G

£1,000,000



Ground Floor



First Floor

Total floor area 387.4 m² (4,170 sq.ft.) approx

This floor plan is for illustrative purposes only. It is not drawn to scale. Any measurements, floor areas (including any total floor area), openings and orientation are approximate. No details are guaranteed, they cannot be relied upon for any purpose and they do not form part of any agreement. No liability is taken for any error, omission or misstatement. A party must rely upon its own inspection(s). Powered by www.propertybox.io



[view this property online](http://mannersandharrison.co.uk/Property/MAR112170) mannersandharrison.co.uk/Property/MAR112170



Property Ref:
MAR112170 - 0002

1. MONEY LAUNDERING REGULATIONS Intending purchasers will be asked to produce identification documentation at a later stage and we would ask for your co-operation in order that there is no delay in agreeing the sale. 2. These particulars do not constitute part or all of an offer or contract. 3. The measurements indicated are supplied for guidance only and as such must be considered incorrect. Potential buyers are advised to recheck measurements before committing to any expense. 4. We have not tested any apparatus, equipment, fixtures or services and it is in the buyers interest to check the working condition of any appliances. 5. Where an EPC, or a Home Report (Scotland only) is held for this property, it is available for inspection at the branch by appointment. If you require a printed version of a Home Report, you will need to pay a reasonable production charge reflecting printing and other costs. 6. We are not able to offer an opinion either written or verbal on the content of these reports and this must be obtained from your legal representative. 7. Whilst we take care in preparing these reports, a buyer should ensure that his/her legal representative confirms as soon as possible all matters relating to title including the extent and boundaries of the property and other important matters before exchange of contracts.

Manners & Harrison is a trading name of Sequence (UK) Limited which is registered in England and Wales under company number 4268443, Registered Office is Cumbria House, 16-20 Hockliffe Street, Leighton Buzzard, Bedfordshire, LU7 1GN. VAT Registration Number is 500 2481 05.

manners & harrison



01642 311133



Marion@mannersandharrison.co.uk



30 & 30a Stokesley Road, Marton,
MIDDLESBROUGH, Cleveland, TS7 8DX



mannersandharrison.co.uk