



Glencairn Road, SW16

£300,000

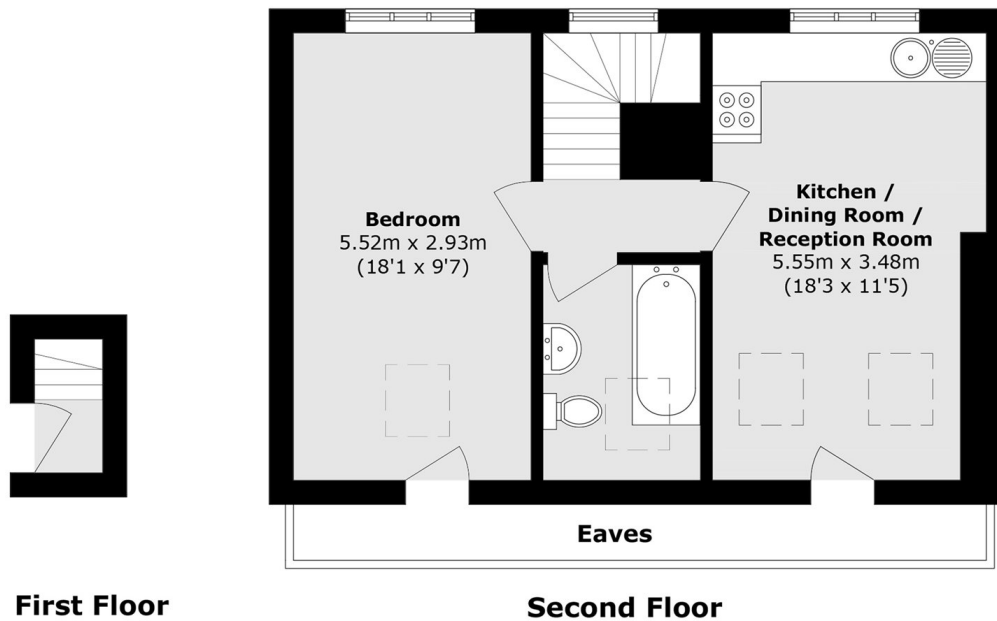
This top floor one double bedroom period home is an ideal first time purchase. It features a spacious open-plan living area, flooded with natural light, and benefits from a modern kitchen.

Glencairn Road is ideally positioned just off Streatham High Road, with its wide array of shops, bars, and restaurants only moments away. Nearby Norbury and Streatham Common stations provide frequent mainline services to London Victoria and London Bridge, offering excellent connections into Central London.

Features

- One Double Bedroom
- Open Plan Living
- Over 520 Sq Ft
- Convenient Location
- Streatham Common
- No Onward Chain

Glencairn Road,
LONDON, SW16



Total area (approx.): 48.5 sq. m (522.0 sq. ft)