



WESTBOURNE TERRACE, W2

£2,817 per month

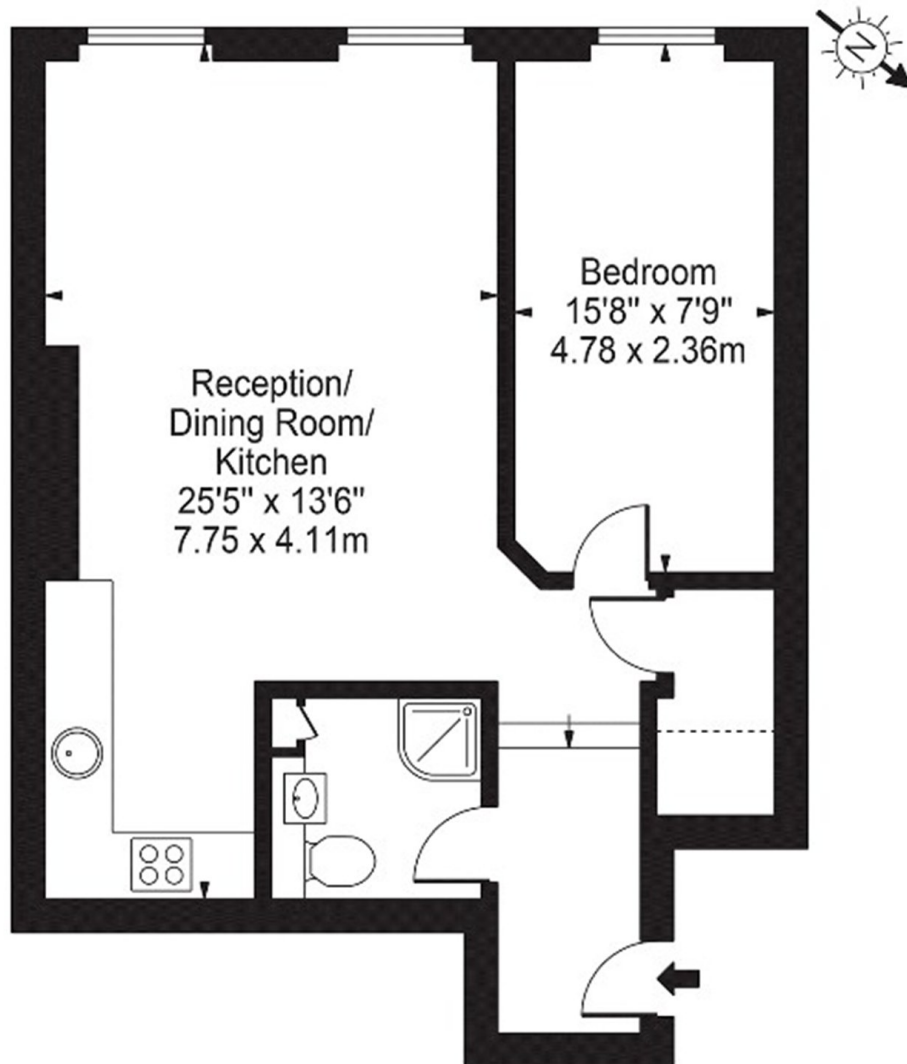
Stunning south west facing apartment set on this impressive tree lined road.

Wooden floors
South-West facing
Double bedroom

Reception room
Moments from Hyde Park
EPC - D

STEP INSIDE WESTBOURNE TERRACE

Westbourne Terrace, W2
Approx. Gross Internal Area 560 Sq Ft - 52.03 Sq M



Third Floor
For Illustration Purposes Only - Not To Scale

This floor plan should be used as a general outline for guidance only and does not constitute in whole or in part an offer or contract.
Any intending purchaser or lessee should satisfy themselves by inspection, searches, enquiries and full survey as to the correctness of each statement.
Any areas, measurements or distances quoted are approximate and should not be used to value a property or be the basis of any sale or let.

Notting Hill
020 7313 6910

Energy Rating: D We aim to make our particulars both accurate and reliable. However, they are not guaranteed; nor do they form part of an offer or contract. If you require clarification on any points then please contact us, especially if you're traveling some distance to view. Please note that appliances and heating systems have not been tested and therefore no warranties can be given as to their good working order

MARSH &
PARSONS