



Shepherd's Bush Green, W12

£415 Per week

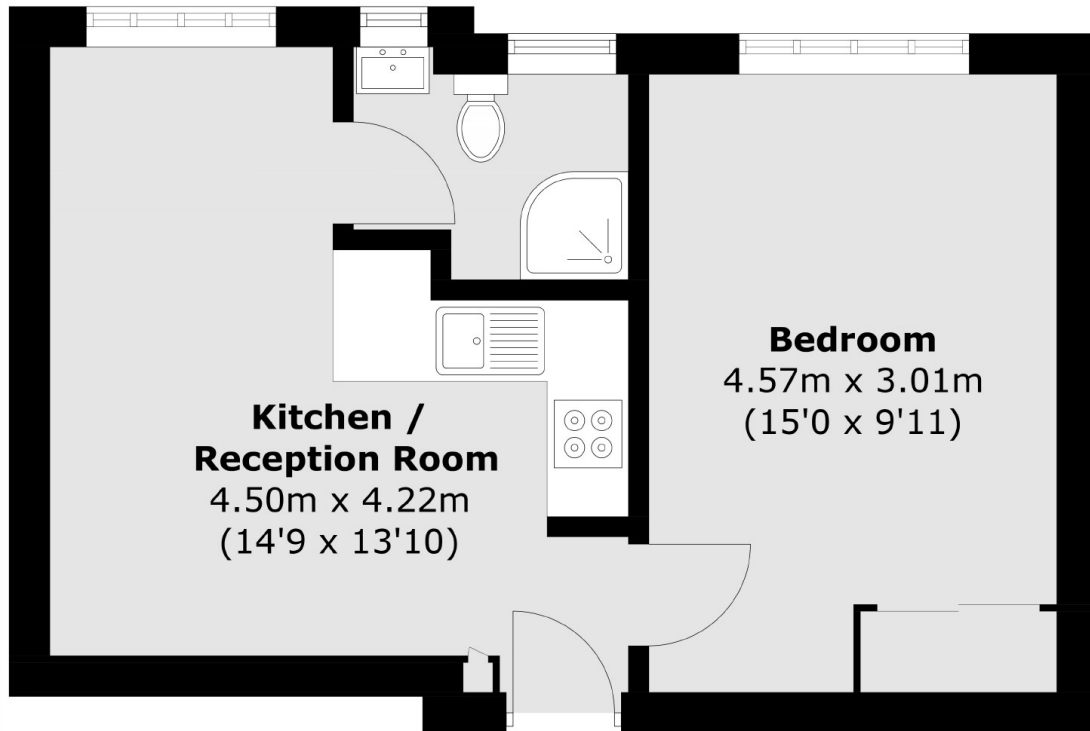
A one bedroom flat set within a 1930's Art Deco building. The flat offers a spacious double bedroom, a good size reception room, a kitchen and a bathroom.

The nearest underground station is Shepherd's Bush (Central Line, London Overground) and Shepherd's Bush Market (Hammersmith & City Line) and motorists can find easy access in and out of London via the A40/M40.

Features

- Art Deco Building
- One Bedroom Flat
- Lift
- Central Location
- Good Condition

Shepherds Bush Green, London, W12



Total area (approx.): 33.8 sq. m (363.8 sq. ft)