



17 Batworth Park Crossbush, ARUNDEL BN18 9PG

£245,000 Leasehold



2 Bedrooms



1 Bathroom



1 Reception Room

Sw

Sims Williams

Key Features

- First Floor Apartment
- Rural Location
- Fitted Kitchen
- Spacious Living Room with Bay Window
- Main Bedroom with Ensuite
- Further Bedroom with Ensuite
- Private Garage
- Communal Grounds & Resident Parking
- No Onward Chain

EPC Rating

Current = C

Potential = C

Council Tax Band

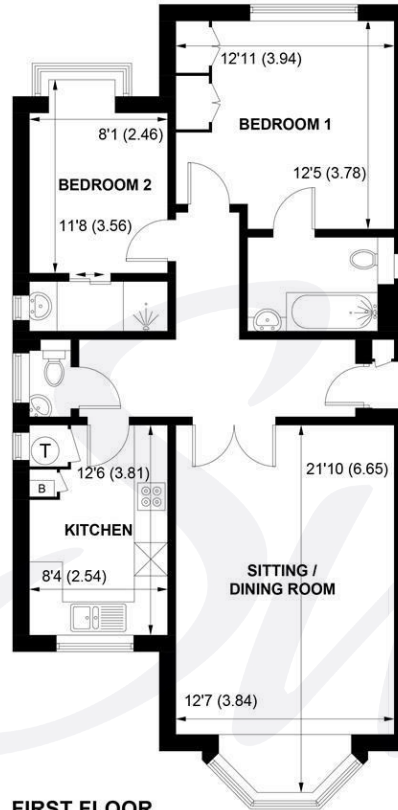
Band = D

Tenure - Leasehold

Years Remaining: 60 years

Service Charge: £4,655.00





APPROXIMATE GROSS INTERNAL AREA = 816 SQ FT / 75.8 SQ M

EXTERNAL CUPBOARD = 1 SQ FT / 0.1 SQ M

TOTAL = 817 SQ FT / 75.9 SQ M

NOT TO SCALE (For illustrative purposes only as defined by RICS Code of Measuring Practice) 2026 ©
Produced for Sims Williams



simswilliams.co.uk

CHICHESTER

8-9 Southgate
Sales 01243 787868
Lettings 01243 836055
chichester@simswilliams.co.uk

WALBERTON

5 Maple Parade
Sales 01243 551368
Lettings 01243 836055
walberton@simswilliams.co.uk

ARUNDEL

8a High Street
Sales 01903 885678
Lettings 01903 881133
arundel@simswilliams.co.uk

BOGNOR REGIS

46 High Street
Sales 01243 862626
Lettings 01243 836055
bognor-regis@simswilliams.co.uk

Viewing Strictly by arrangement via the vendor's agent Sims Williams 01903 885678. These particulars are believed to be correct but their accuracy is not guaranteed and they do not form part of any contract.