



Knights Lane

Kingsthorpe Village, Northampton

oriordanbond
SALES & LETTINGS



Knights Lane

Kingsthorpe Village
NN2 6QL

Offers Over
£310,000

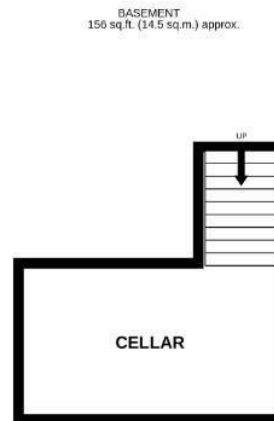
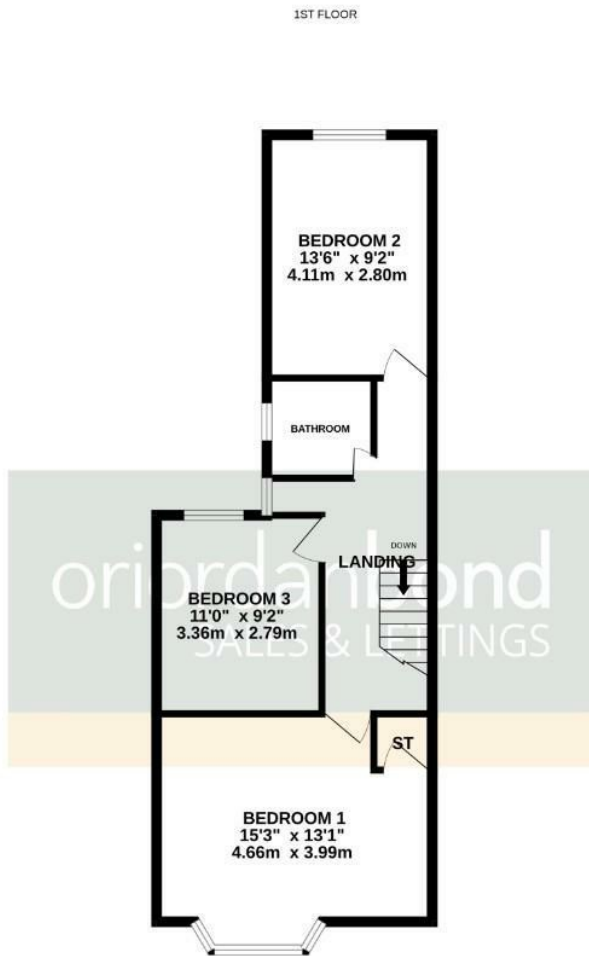
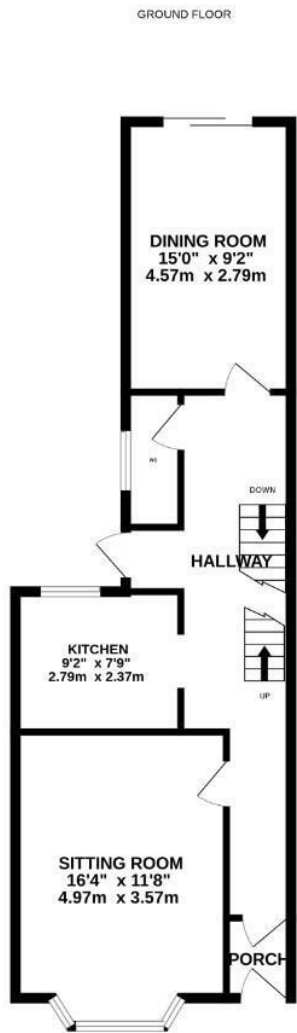
A mature double bay fronted three bedroom family home set in the desirable location of Kingsthorpe Village. The property is within walking distance of local amenities, a bus stop and Kingsthorpe Village Primary School.

The accommodation comprises entrance hall, sitting room, separate kitchen, dining room, cloakroom/WC, cellar, three first floor double bedrooms and a shower room. Outside is a large rear garden with patio area leading to laid to lawn with shrub borders. To the front of the property is a block paved driveway providing off road parking. Further benefits include gas radiator heating and double glazing. (B/1141/L)

- Three bedroom terraced home
- Two reception rooms
- Shower room
- Gas radiator heating
- Large rear garden
- Off road parking







TOTAL FLOOR AREA : 1297 sq.ft. (120.5 sq.m.) approx.

Whilst every attempt has been made to ensure the accuracy of the floorplan contained here, measurements of doors, windows, rooms and any other items are approximate and no responsibility is taken for any error, omission or mis-statement. This plan is for illustrative purposes only and should be used as such by any prospective purchaser. The services, systems and appliances shown have not been tested and no guarantee as to their operability or efficiency can be given.
Made with Metropix ©2026



Additional information

- Council Tax Band: C
- Energy Efficiency Rating: D

Viewing

Viewing strictly by appointment – details below

Disclaimer

O'Riordan Bond Estate Agents Limited has not tested apparatus, equipment, fittings or services and so cannot verify they are in working order. The buyer is advised to obtain verification from their solicitor or surveyor.

O'Riordan Bond Kingsthorpe Sales

01604 722007

kingsthorpe@oriordanbond.co.uk

