



1 Bedrooms

Apartment

£390,000

Located in

Brentford





29 Moorings House

Brentford | Middlesex | TW8 8EL



Set within the exclusive, gated waterside development at The Island, Brentford Lock, this beautifully presented ground floor apartment offers contemporary luxury living with tranquil views over the Grand Union Canal.

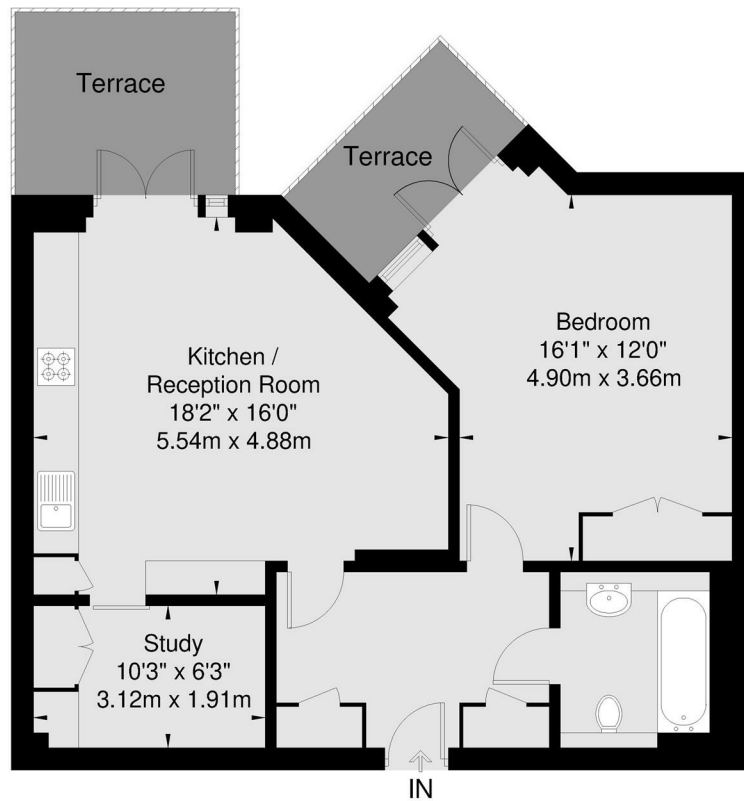
29 Moorings House

£390,000 Leasehold



- Ground Floor Luxury Apartment
- One bedroom
- Open-plan fully Integrated Kitchen/dining/reception room
- River views
- Concierge service
- Underground Parking
- Study/TV room
- Gated waterside development
- Two private terraces
- Excellent local amenities

Moorings House
Approx Gross Internal Area
64.8 Sq m / 698 Sq Ft



Viewmedia @ 2026
Viewmedia.co.uk

Whilst every attempt has been made to ensure the accuracy of this floor plan, measurements of doors, windows and rooms are approximate and no responsibility is taken for any error or omission. This illustration is for identification purpose only. Not drawn to scale, unless stated. Dimensions shown are to the nearest 3" and are to the points indicated by the arrow heads.

EPC Rating: C
Council Tax Band D
Local Authority

Agents Note: Whilst every care has been taken to prepare these particulars, they are for guidance purposes only. All measurements are approximate and are for general guidance purposes only and whilst every care has been taken to ensure their accuracy, they should not be relied upon and potential buyers/tenants are advised to recheck the measurements.

Energy Efficiency Rating		
	Current	Potential
Very energy efficient - lower running costs		
(92 plus) A		
(81-91) B		
(69-80) C	80	80
(55-68) D		
(39-54) E		
(21-38) F		
(1-20) G		
Not energy efficient - higher running costs		
England & Wales	EU Directive 2002/91/EC	

30 Radnor Road
TW1 4NQ
Twickenham
TW1 4NQ



jo@teddyproperty.com

02046 384065

30