



## Elgin Avenue, W9

£750,000

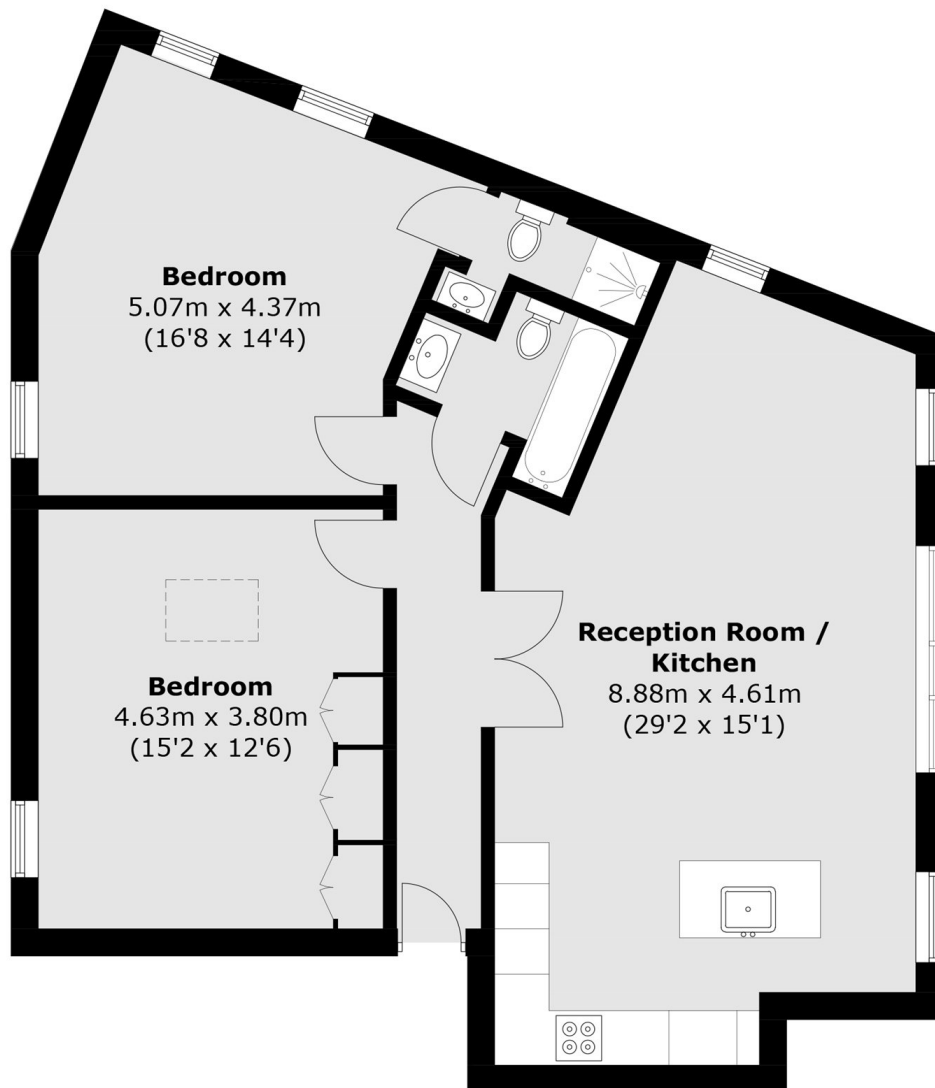
A top floor flat set in a charming Victorian conversion. This well-presented property comes complete with two double bedrooms, one of which features an en suite, an open plan kitchen/reception and sash windows throughout.

Elgin Avenue is in the heart of Maida Vale. The property is conveniently located within walking distance of several transportation links, including Maida Vale station (Bakerloo line), a myriad of restaurants, cafés and shops, and the green spaces of Paddington Recreation Ground.

### Features

- Top Floor Flat
- Two Double Bedrooms
- Open Plan Reception
- En Suite
- Prime Location
- Chain Free

# Elgin Avenue, Maida Vale, W9



## Third Floor

Total area (approx.): 84.0 sq. m (904.1 sq. ft)