

Kingston Road, SW20

£1,995 Per calendar month

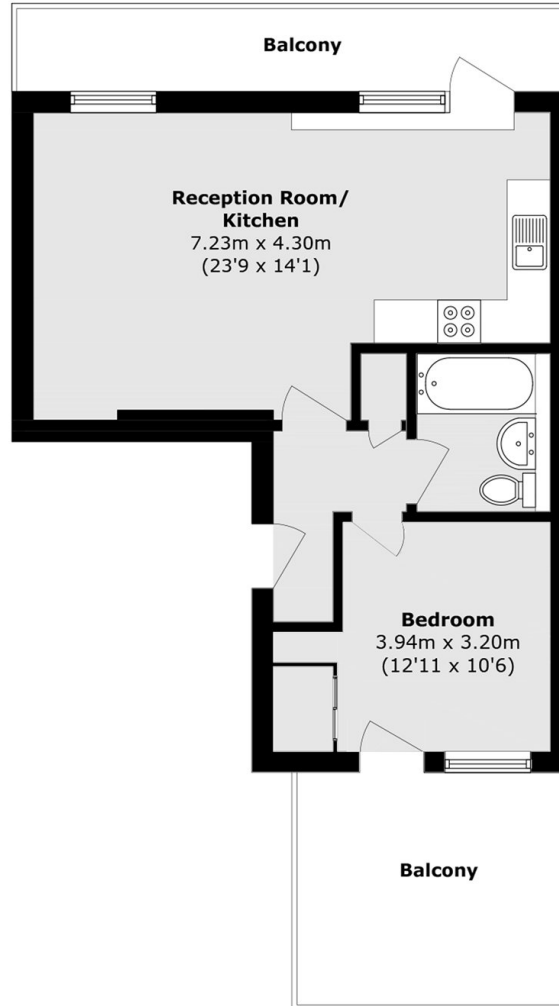
This new build top floor one bedroom apartment has two outdoor spaces, lift access, video entry and has great light throughout the property. The open plan reception room has a private balcony and the bedroom has its own private roof terrace.

Wimbledon Chase station is just a few moments walk away, providing direct access to Central London. By road the A3 is a mile from the development. Residents benefit from an array of shops, bars and restaurants as well as the very popular David Lloyd Leisure Club.

Features

- New Build
- One Bedroom
- Two Roof Terraces
- Open Plan Reception
- Lift Access
- Video Entry

Kingston Road, Wimbledon, SW20



Total area (approx.): 49.0 sq. m (527.4 sq. ft)