



75, High Street, Hunsdon  
SG12 8NJ  
Offers Over £500,000



[stevenoates.com](http://stevenoates.com)





## Randle Cottage, 75 High Street, Hunsdon, Hertfordshire, SG12 8NJ

A surprisingly spacious 2 bedroom period cottage benefiting from generous living accommodation with a unique blend of charming character along with a light, open layout for everyday use. The property comprises of a good size entrance hall, 3 open reception areas, a separate kitchen, garden room and utility on the ground floor. On the first floor, there are 2 double bedrooms and a good size bathroom. Externally, there is a pretty rear garden which features a brick built outhouse and driveway parking to the rear. Internal viewing is advised to fully appreciate this property.

The property sits within the centre of the popular village of Hunsdon. The village boasts a strong sense of community, with a choice of two popular village pubs, village shop and primary school. For commuters, Hunsdon enjoys superb transport links, just a short drive from Harlow Town and Roydon stations, offering direct rail services into London Liverpool Street in under 40 minutes. Road access is equally convenient, with the A10, M11, and M25 easily reachable. Despite its tranquil setting, the village lies within easy reach of Bishop's Stortford and Hertford, offering a wider array of shops, restaurants, and amenities.





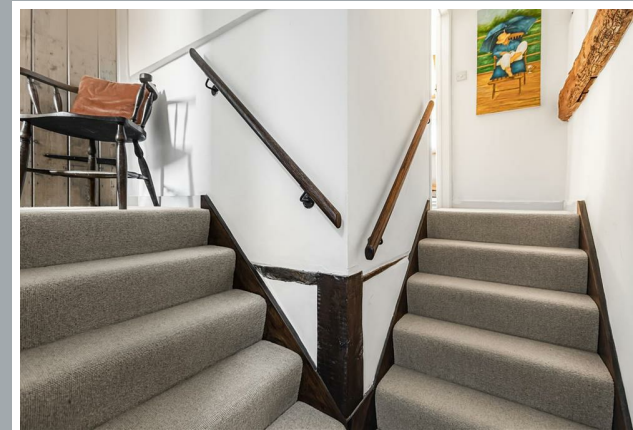
70 Fore Street, Hertford, Hertfordshire, SG14 1BY





70 Fore Street, Hertford, Hertfordshire, SG14 1BY





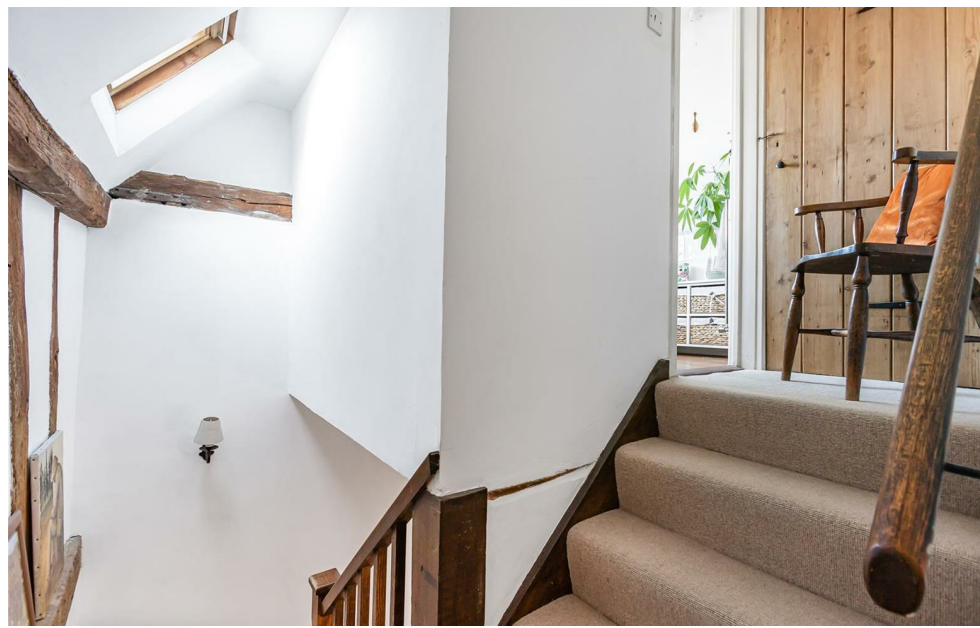
70 Fore Street, Hertford, Hertfordshire, SG14 1BY





70 Fore Street, Hertford, Hertfordshire, SG14 1BY





70 Fore Street, Hertford, Hertfordshire, SG14 1BY





70 Fore Street, Hertford, Hertfordshire, SG14 1BY





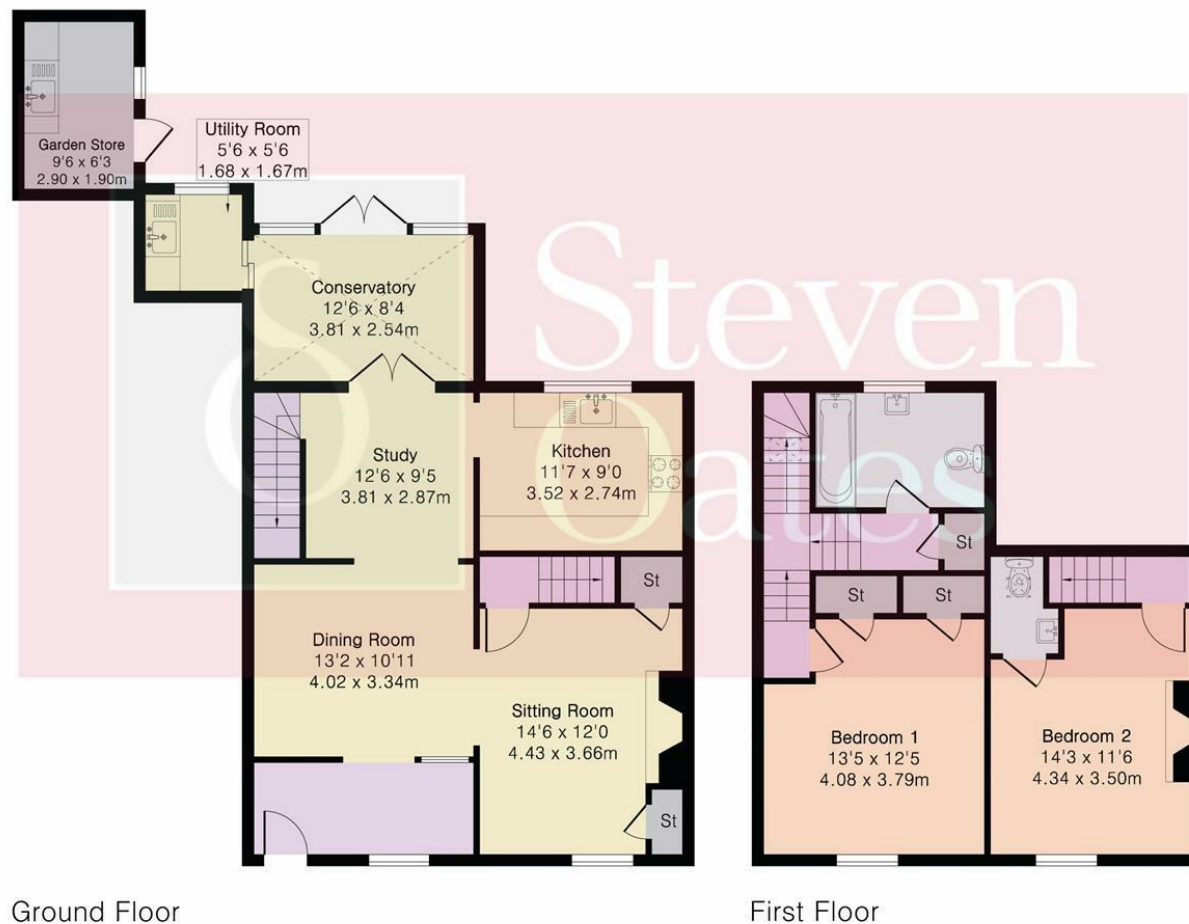
70 Fore Street, Hertford, Hertfordshire, SG14 1BY



**Approximate Gross Internal Area 1374 sq ft - 127 sq m**

Ground Floor Area 844 sq ft – 78 sq m

First Floor Area 530 sq ft – 49 sq m



Ground Floor

First Floor

These particulars, whilst believed to be accurate are set out as a general outline only for guidance and do not constitute any part of an offer or contract. Intending purchasers should not rely on them as statements of representation of fact, but must satisfy themselves by inspection or otherwise as to their accuracy. No person in this firm's employment has the authority to make or give any representation or warranty in respect of the property.



[stevenoates.com](http://stevenoates.com)