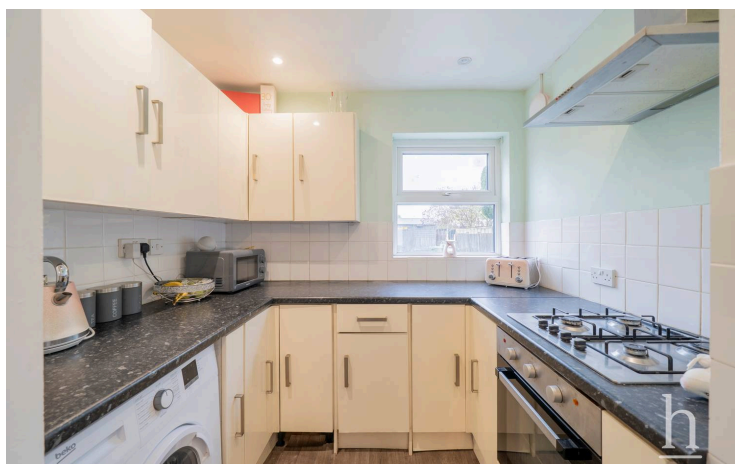


Three bedroom terraced house • Lounge • Dining Room • Fitted kitchen • Family bathroom • Good size garden  
• Close to local amenities



## 22 Meadow Lane, Ellesmere Port £150,000 Freehold





A surprisingly spacious three-bedroom terraced home, ideally positioned just moments from the local train station and a range of amenities.

Council Tax band: A

Tenure: Freehold

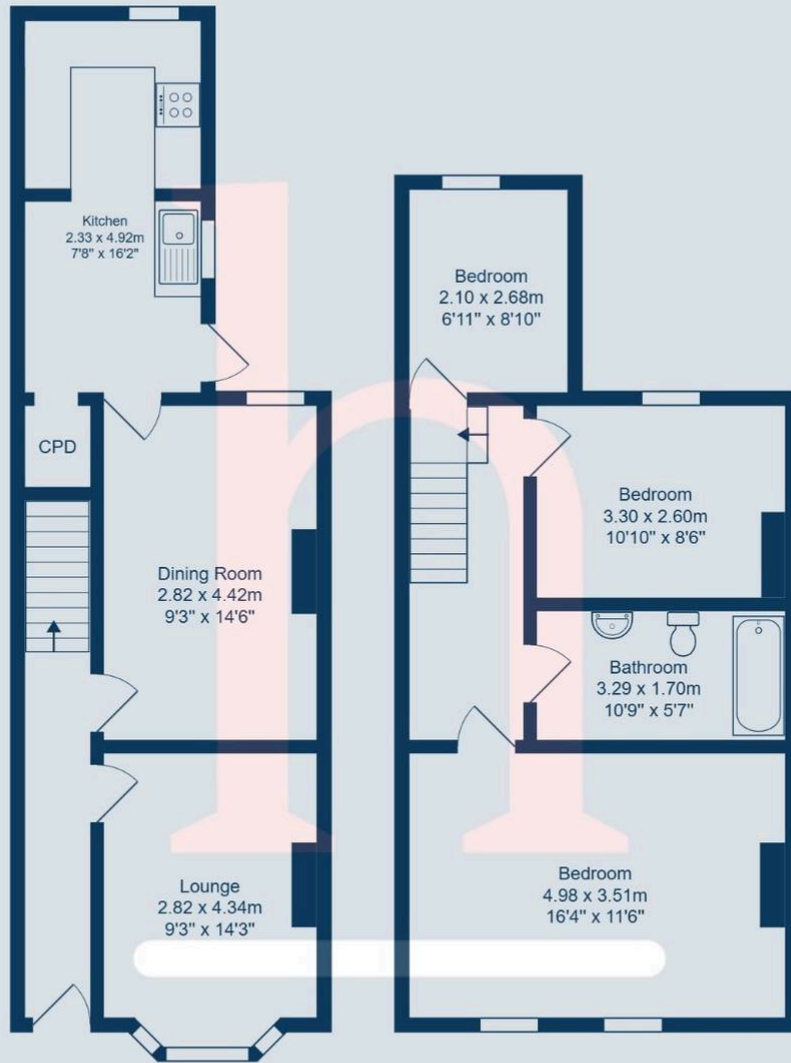






Ground Floor

1st Floor



Total Area: 90.0 m<sup>2</sup> ... 969 ft<sup>2</sup>

All measurements are approximate and for display purposes only.

You can include any text here. The text can be modified upon generating your brochure.