

Location:

Burlington Mews is moments away from the wide array of shops and restaurants Acton has to offer and the popular Churchfield Road. Local transport links include East Acton (Central Line), Acton Central (Overground) and Acton Mainline (Elizabeth Line).

Key points:

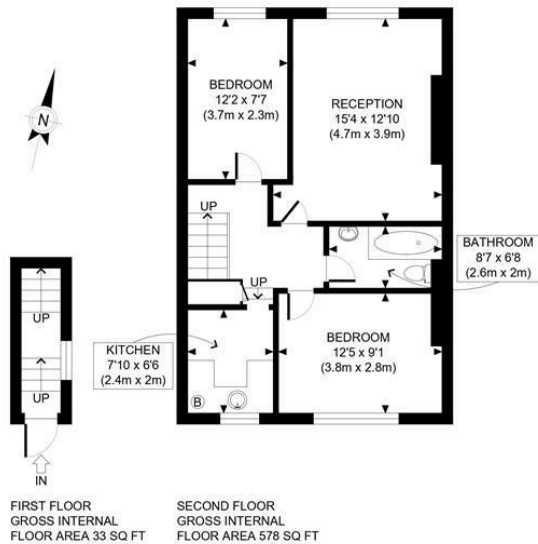
- Two bedrooms
- Top floor flat
- 611 sq ft / 57 sq m
- Share of freehold
- No onward chain

Do Better:

Acton
sales@astonrowe.co.uk

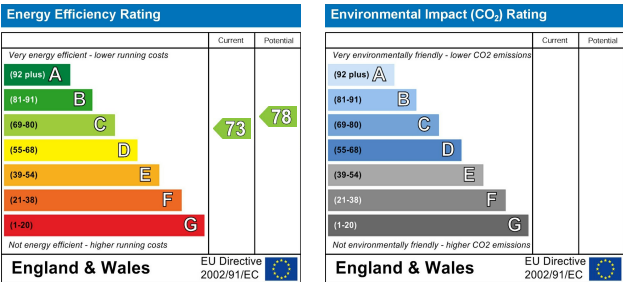
57-59 Churchfield Road,
Acton, London, W3 6AY

020 8992 3600



PROPERTY PHOTO PLANS.CO.UK
ONE STOP SHOP FOR PROPERTY MARKETING

This plan is for illustrative purposes only and should be used as such by any prospective client. Whilst every attempt has been made to ensure the accuracy of the Floor Plan contained here, measurements of the doors, windows, rooms and any other items are approximate and no responsibility is taken for any errors, omissions, or misstatement. The services, systems and appliances shown have not been tested and no guarantee as to the operability or efficiency can be given.



£350,000

Burlington Mews, London W3 6AZ

- 0 Reception Rooms
- 2 Bedrooms
- 1 Bathrooms



The current owner says:

The property is in a fantastic location for the local shops, schools, parks and transport links.

A bright and well-proportioned two-bedroom, top floor apartment in Acton. The property is made up of a spacious reception room with high ceilings, a separate kitchen, two bedrooms, a family bathroom and lots of storage within the property.

Burlington Mews is moments away from the wide array of shops and restaurants Acton has to offer and the popular Churchfield Road. Local transport links include East Acton (Central Line), Acton Central (Overground) and Acton Mainline (Elizabeth Line) as well as excellent bus services to nearby Shepherd's Bush, Chiswick, and Hammersmith. The M4 and M40 motorway routes are also easily accessible.

What's better:

A bright and spacious two-bedroom, top floor apartment in Acton.

