



Huddleston Road, NW2

£575,000

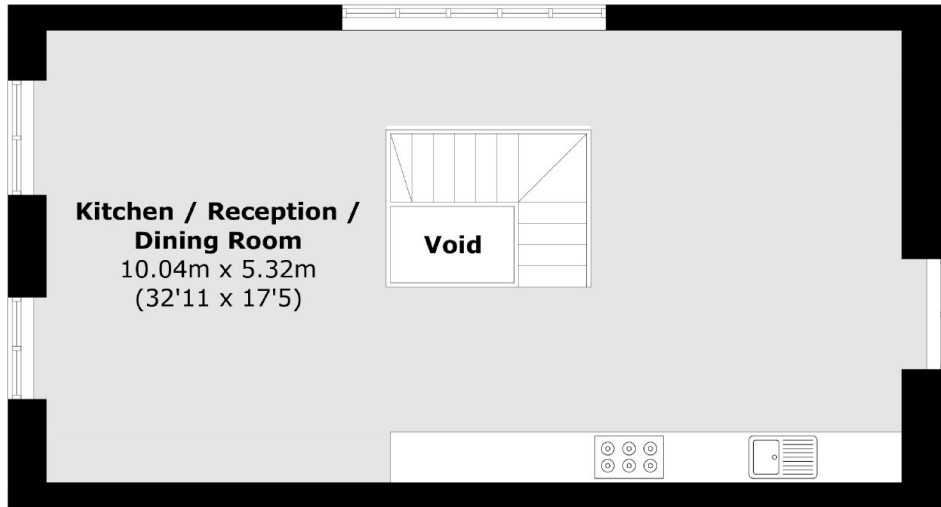
This two double bedroom, two bathroom split level apartment is arranged over the first and second floors of a charming church conversion, with an impressive 575 sq ft open plan living area with vaulted ceilings and beautiful stained glass windows, ample storage, exposed beams, wood flooring and high quality fixtures throughout.

Situated on Huddleston Road, a short walk away from the local cafés, restaurants and amenities of Willesden Green and Walm Lane. The 86 acre green open spaces of Gladstone Park are nearby, and transport links are superb from Willesden Green (Jubilee line) and Dollis Hill (Jubilee line).

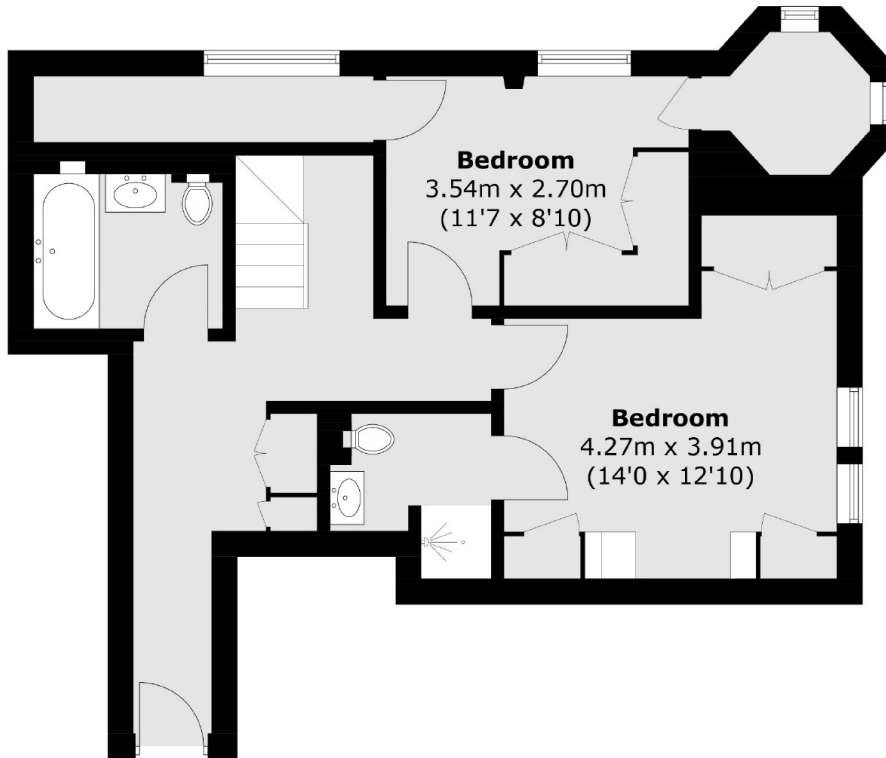
Features

Two Double Bedrooms
In Excess Of 1,100 sqft
Split-Level Apartment
High Ceilings
Church Conversion
Modern Finish

Huddlestone Road,
London, NW2



First Floor



Ground Floor

Total area (approx.): 106.5 sq. m (1146.3 sq. ft)
(Excluding Void)