



Crosby Row, SE1

£2,500 Per calendar month

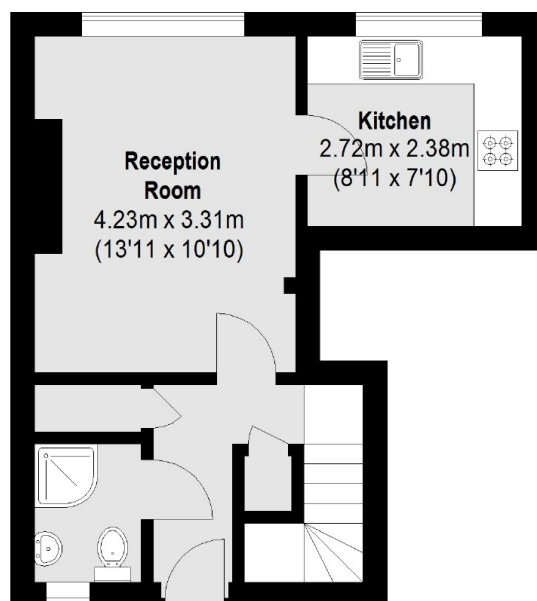
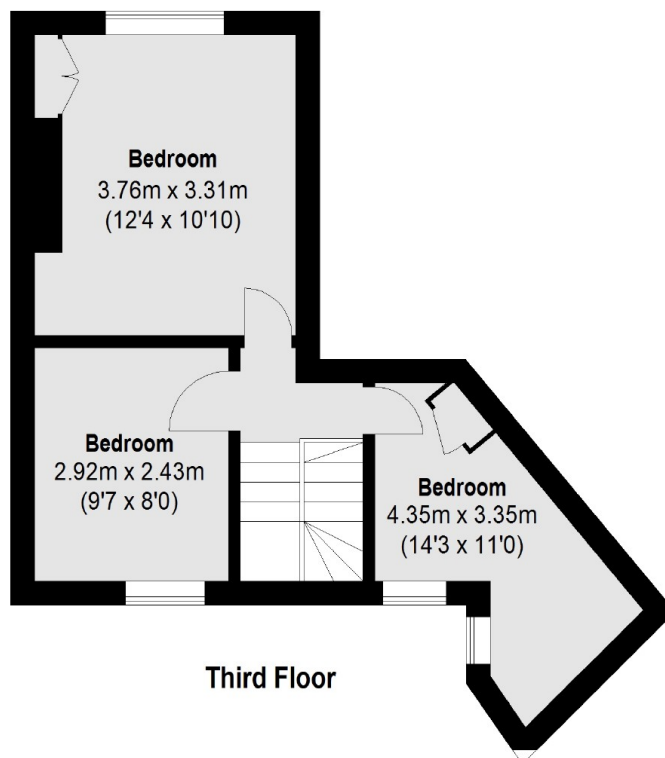
This modern style, two bedroom apartment is split over two levels, comes with a fantastic sized home office space too. Situated moments from Borough High Street, Bermondsey Street and London Bridge Station and is ideally suited to a family, professional couple or 2 professional sharers.

Situated just behind Borough High Street, Crosby Row is a short walk from London Bridge Station, Borough Market and Bermondsey Street.

Features

- Two Double Bedrooms
- Modern Style
- Home Office Space
- Duplex Flat
- Separate Kitchen
- Fantastic Location

Crosby Row, London, SE1



Total area (approx.): 64.55 sq. m (694 Sq. ft)