



Connells

Hillside Gardens
Braintree



Property Description

Discover the perfect blend of comfort and modern living in this charming three bedroom mid-terrace residence.

Step into a welcoming entrance hall that leads you to a newly fitted kitchen. The expansive 21 ft living room/diner is perfect for entertaining or unwinding after a long day and it seamlessly flows into a delightful conservatory.

The first floor offers three well proportioned bedrooms, a family bathroom and a separate WC.

Outside, enjoy your own private sanctuary in the garden, complete with a brick shed and garage for all your storage needs. Ample communal parking is available.

This property is close to Braintree Town Centre and Braintree Train Station which has links to London Liverpool Street, making it easy to access all the amenities the area has to offer. Furthermore 'Braintree Village' with a variety of shopping and leisure facilities are only a short distance away.

Additionally the house is within walking distance to reputable schools including 'John Ray Infant And Junior School' and 'Notley High School & Braintree Sixth Form' making it a great choice for families with children.

Furthermore, the A131 and A120 are easily accessible providing excellent transport links

to Chelmsford City and Stansted Airport.

Entrance Hall

Stairs to first floor, radiator, understair storage cupboard.

Kitchen

9' 10" x 9' 8" (3.00m x 2.95m)

Inset sink unit one and a half bowl with left hand drainer with cupboards under, working surfaces to the side with a matching range of wall mounted units with further drawers and cupboards under, built in oven, hob and extractor fan, space for appliances, double glazed window to rear.

Living Room/Diner

21' 1" x 12' 7" (6.43m x 3.84m)

Double glazed window to the front aspect, two radiators, doors to conservatory.

Conservatory

12' 7" x 9' 4" (3.84m x 2.84m)

Double glazed doors to the rear garden, windows to the rear and side aspect, door the side aspect, radiator.

First Floor Landing

Loft access.

Bedroom One

12' 7" x 11' 1" (3.84m x 3.38m)

Double glazed window to the front aspect, radiator.

Bedroom Two

11' 11" x 9' 4" (3.63m x 2.84m)

Double glazed window to the rear aspect, fitted wardrobes, radiator.

Bedroom Three

9' x 9' (2.74m x 2.74m)

Double glazed window to the front aspect, storage cupboard, radiator.

Family Bathroom

Vanity hand wash basin with cupboard under, paneled bath with shower unit above, heated towel rail, double glazed window to the rear aspect.

Seperate Wc

Low level WC, double glazed window to the rear aspect.

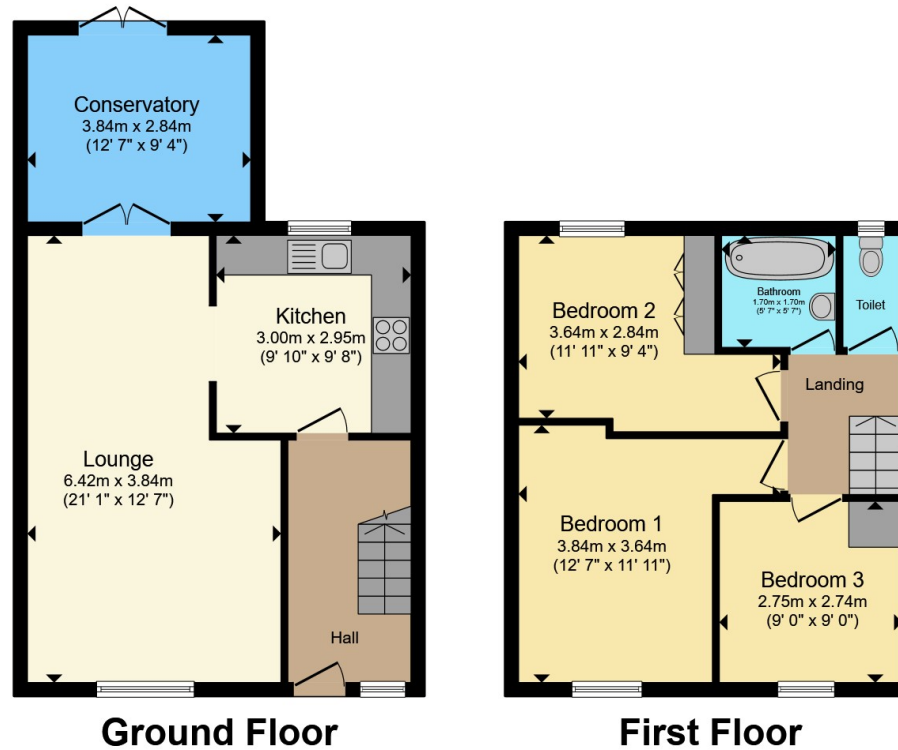
Rear Garden

Courtyard style, brick shed, courtesy door to the garage, gate providing access to the parking.









Total floor area 89.0 m² (958 sq.ft.) approx

This floor plan is for illustrative purposes only. It is not drawn to scale. Any measurements, floor areas (including any total floor area), openings and orientation are approximate. No details are guaranteed, they cannot be relied upon for any purpose and they do not form part of any agreement. No liability is taken for any error, omission or misstatement. A party must rely upon its own inspection(s). Powered by www.propertybox.io



To view this property please contact Connells on

T 01376 552 222
E braintree@connells.co.uk

17 Great Square
 BRAINTREE CM7 1TX

EPC Rating: C Council Tax
 Band: C

Tenure: Freehold

view this property online connells.co.uk/Property/BRT308665



1. MONEY LAUNDERING REGULATIONS Intending purchasers will be asked to produce identification documentation at a later stage and we would ask for your co-operation in order that there will be no delay in agreeing the sale. 2. These particulars do not constitute part or all of an offer or contract. 3. The measurements indicated are supplied for guidance only and as such must be considered incorrect. Potential buyers are advised to recheck measurements before committing to any expense. 4. We have not tested any apparatus, equipment, fixtures, fittings or services and it is in the buyers interest to check the working condition of any appliances.

Connells Residential is registered in England and Wales under company number 1489613, Registered Office is Cumbria House, 16-20 Hockliffe Street, Leighton Buzzard, Bedfordshire, LU7 1GN. VAT Registration Number is 500 2481 05.

See all our properties at www.connells.co.uk | www.rightmove.co.uk | www.zoopla.co.uk

Property Ref: BRT308665 - 0007