



OAKWOOD COURT, W14

£9,000 per month

This stunning lateral three-bedroom apartment is situated on the first floor of the imposing red-brick Oakwood Court development and has south-facing views onto the communal garden from the reception room. The

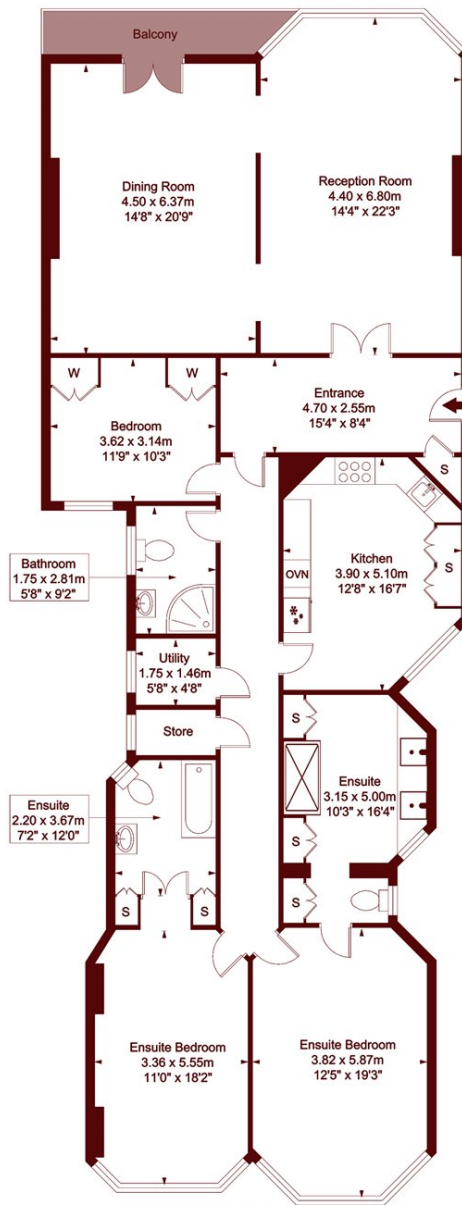
Three Large Bedrooms
Three Bathrooms
Double Reception Room

Portered Building
First Floor
Lift Access

STEP INSIDE OAKWOOD COURT

Oakwood Court

APPROX. GROSS INTERNAL FLOOR AREA : 204.55 SQM / 2202 SQFT



First Floor

This plan is for layout guidance only. Drawn in accordance with RICS guidelines. Not drawn to scale unless stated. Windows & door openings are approximate. Whilst every care is taken in the preparation of this plan, please check all dimensions, shapes & compass bearings before marking any decisions reliant upon them.

ELLIE CLAIRE PHOTOGRAPHY LTD
www.ellieclairephotography.com

Holland Park
020 7605 6895

Energy Rating: C We aim to make our particulars both accurate and reliable. However, they are not guaranteed; nor do they form part of an offer or contract. If you require clarification on any points then please contact us, especially if you're traveling some distance to view. Please note that appliances and heating systems have not been tested and therefore no warranties can be given as to their good working order

MARSH &
PARSONS