



33 Couchmore Avenue, Esher

Guide Price £4,000 pcm

**DAVIES**  
PROPERTY PARTNERS

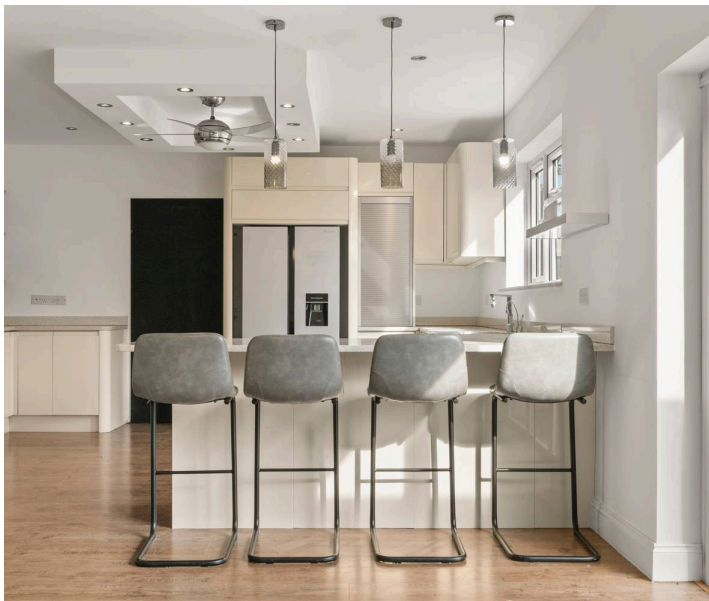
## 33 Couchmore Avenue

Esher, Esher

A generously proportioned and stylish chalet-bungalow, thoughtfully designed for modern living. On the ground floor, the property features a welcoming entrance hallway, a cloakroom, a spacious reception room, a well-appointed family bathroom, a family room / double bedroom, a practical utility room, and a stunning open-plan kitchen/dining area with bi-fold doors opening onto the rear garden.

Upstairs, you'll find three additional bedrooms, two of which feature en-suite facilities, providing comfort and privacy for family and guests alike.

Outside, the front of the property provides ample off-street parking alongside a mature landscaped garden. To the rear lies an impressive and secluded garden, approximately 53 feet wide by 200 feet long—perfect for relaxation or entertaining.

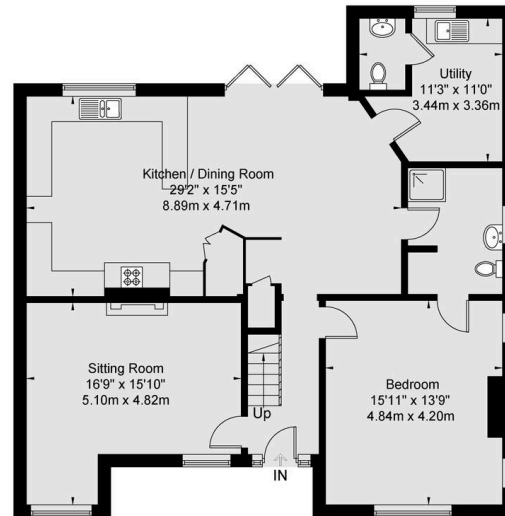


Call us to arrange a viewing on (01932) 588288

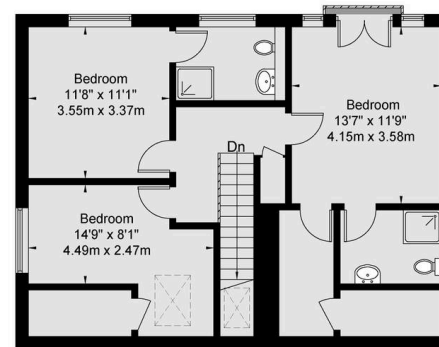


# Couchmore Avenue

Approx Gross Internal Area = 173.9 Sq m 1871 Sq Ft



Ground Floor



First Floor

Viewmedia @ 2022  
Viewmedia.co.uk

Whilst every attempt has been made to ensure the accuracy of this floor plan, measurements of doors, windows and rooms are approximate and no responsibility is taken for any error or omission. This illustration is for identification purpose only. Measured and drawn accordance with RICS guidelines. Not drawn to scale, unless stated. Dimensions shown are to the nearest 3" and are to the points indicated by the arrow heads.

**DAVIES**  
PROPERTY PARTNERS