



Marshall Street, W1F

£1,153 Per week

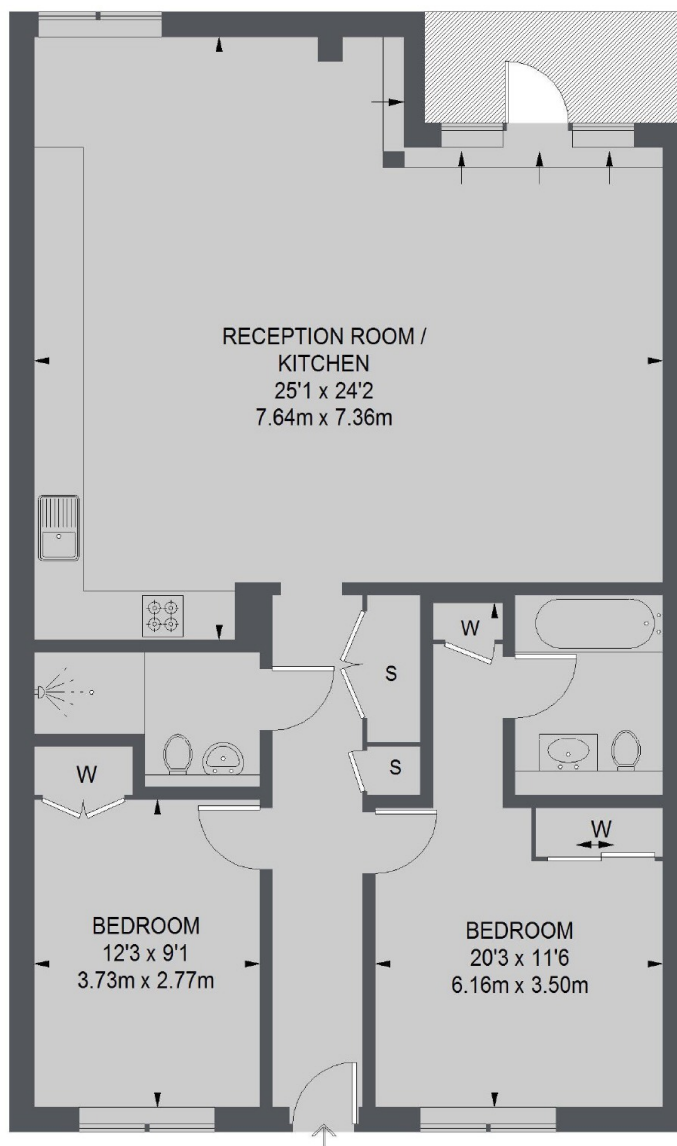
A well presented, bright and spacious two bedroom two bathroom apartment at the popular Regent Lofts and Penthouses development in the heart of Soho.

Regent Lofts is located just off Regent Street bordering Mayfair and Soho in the heart of London's West End, offering a variety of; shops, restaurants and bars. Carnaby Street and Piccadilly Circus are close by.

Features

New Development
24 Hour Concierge
Open Plan Kitchen
Under Floor Heating
Wood Floors
Lift

Marshall Street, London, W1F



FIFTH FLOOR

TOTAL APPROX. FLOOR AREA
1032 SQ. FT. (95.92 SQ. M.)