



Guide Price
£300,000

Freehold

3x  1x  2x 

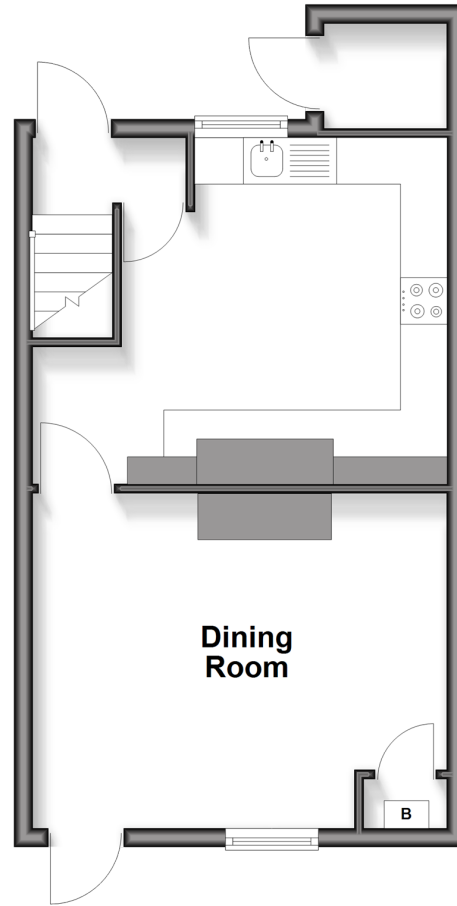
**John Street, Maidstone,
Kent ME14**

OVER 60?

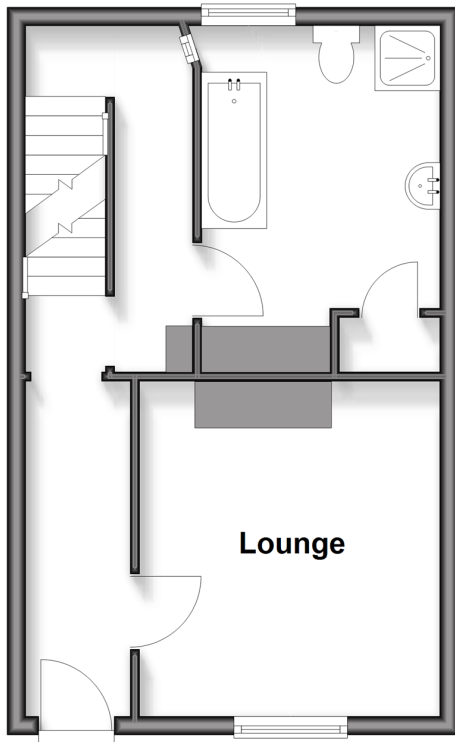
Secure this property
for up to **59% less!**

Wards
Helping you move forwards

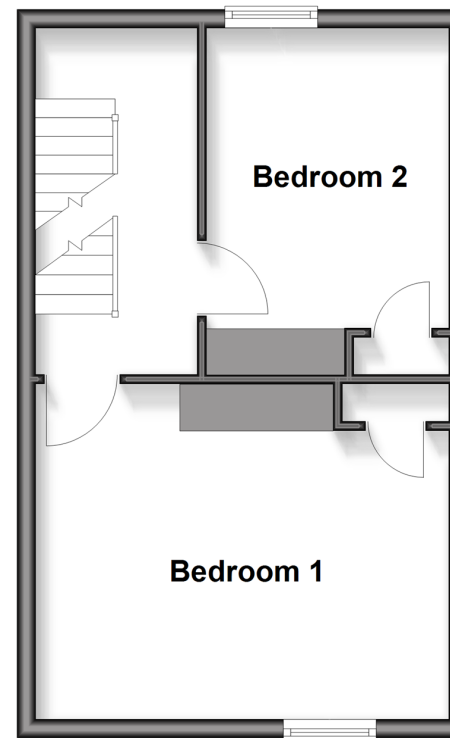
Lower Ground Floor
Approx. 34.7 sq. metres (373.9 sq. feet)



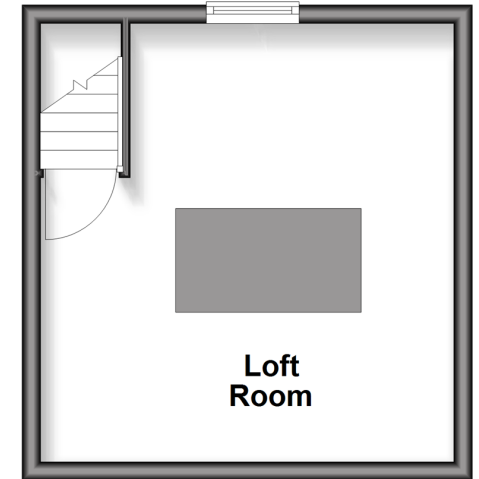
Upper Ground Floor
Approx. 33.1 sq. metres (356.4 sq. feet)



First Floor
Approx. 33.1 sq. metres (356.4 sq. feet)



Second Floor
Approx. 21.0 sq. metres (226.3 sq. feet)



Accommodation

UPPER GROUND FLOOR

Entrance Hall
Lounge: 11'0 x 10'0 (3.36m x 3.05m)
Bathroom

LOWER-GROUND FLOOR

Hallway
Kitchen: 13'0 x 11'0 (3.97m x 3.36m)
Dining Room: 13'0 x 11'10 (3.97m x 3.61m)

FIRST FLOOR

Landing
Bedroom 1: 13'10 x 11'0 (4.22m x 3.36m)
Bedroom 2: 10'11 x 8'0 (3.33m x 2.44m)

SECOND FLOOR

Landing
Loft Room: 15'0 x 13'0 (4.58m x 3.97m)

OUTSIDE

Rear Garden
Front Garden



Main features

- Chain free house
- Ample accommodation over four floors
- Private and well maintained rear garden
- Potential for investment
- Positioned within walking distance to the town centre and train stations to London



Nearest Schools

Primary Schools: North Borough Junior School 0.2 miles, East Borough Primary 0.8 miles, Sandling Primary 1.2 miles

Secondary Schools: Invicta Grammar School 1.0 miles



Transport Information

Train Stations: Maidstone East 0.4 miles, Maidstone Barracks 0.5 miles, Maidstone West 0.9 miles



Address

John Street, Maidstone, Kent ME14



Directions

For directions to this property please contact us.



Wards
Helping you move forwards

Call Maidstone Branch 01622 683737 ■ wardsof Kent.co.uk



- Legal advice should be taken to verify fixtures/fittings, planning, alterations and/or lease details
- Appliances & services are untested, dimensions are approximate and floor plans are not to scale
- Through a Homewise Home For Life Plan people aged 60+ can secure this property for up to 59% less, by purchasing a Lifetime Lease

EPC RATING

CURRENT:	POTENTIAL:
D(60)	B(85)

13159406/20260305/CV/AS