



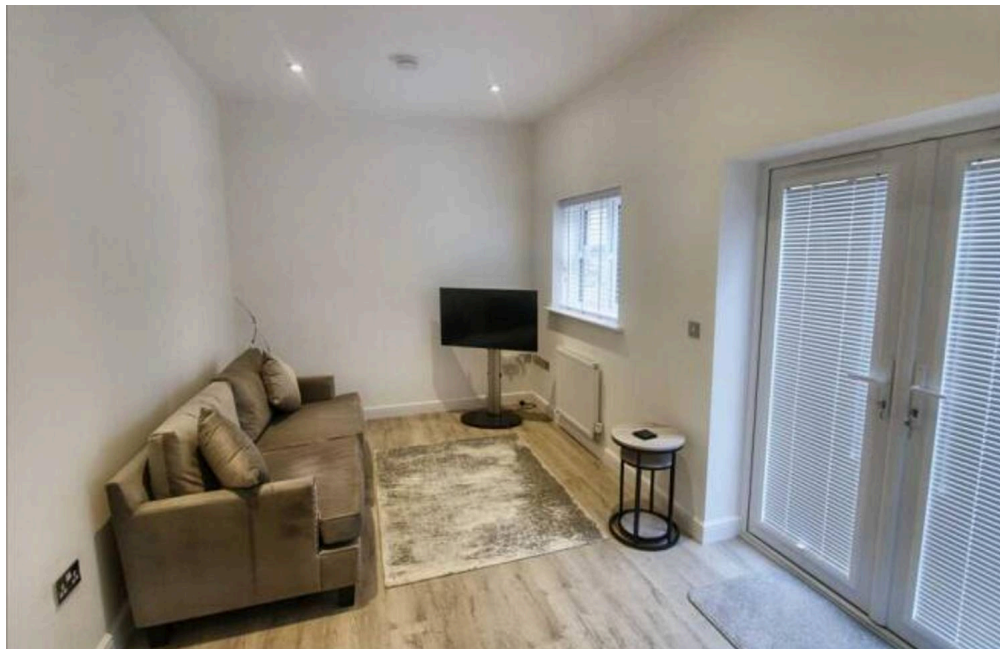
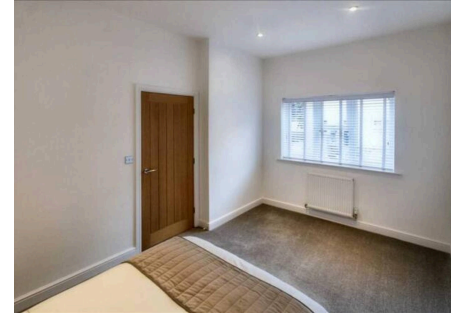
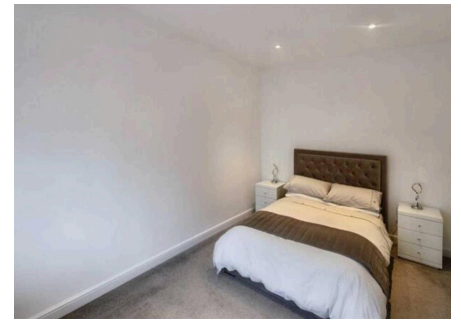
## Frearson Close, Eastwood, NG16 3UF

£165,000 Leasehold

- **\*\*NO UPWARD CHAIN\*\*** • Contemporary TWO BEDROOM End Terrace Bungalow on a Sought-After Over 55s Complex • Open Plan Kitchen Lounge Diner with Reputable Integrated Appliances • Single Allocated Parking Space • Private Enclosed Courtyard & Useful Outbuilding • Conveniently Located in Eastwood, Nottingham • A Short Walk from Local Amenities, Restaurants, Leisure Facilities & Excellent Transport Links



A contemporary TWO BEDROOM bungalow, quietly located within a sought-after over 55s development in the heart of Eastwood. Offering modern, low maintenance living, the layout briefly comprises an entrance hall, kitchen lounge diner with reputable integrated appliances, master bedroom, second versatile bedroom, and a well-appointed shower room. Outside, the property enjoys a private enclosed courtyard, a useful outbuilding, and a single allocated parking space. Situated on a popular modern complex, 23 Frearson Close is only a short walk from an extensive range of local amenities, including supermarkets, cafés, independent shops, restaurants and leisure facilities. Eastwood also offers excellent transport connections, with close proximity to the A610 and M1, making Nottingham, Derby and surrounding areas easily accessible. With its blend of comfort, convenience and community living, this bungalow presents an ideal opportunity for those seeking a peaceful yet well-



Council Tax band: A

Tenure: Leasehold

EPC Energy Efficiency Rating: B

EPC Environmental Impact Rating:  
B

