

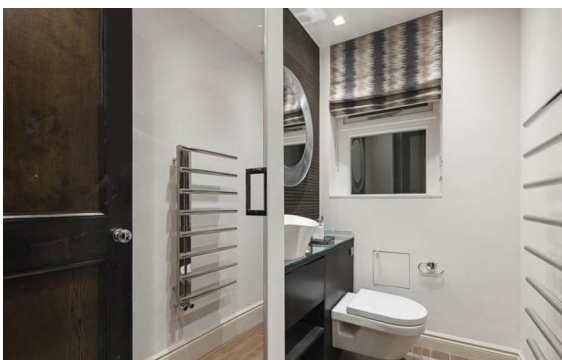
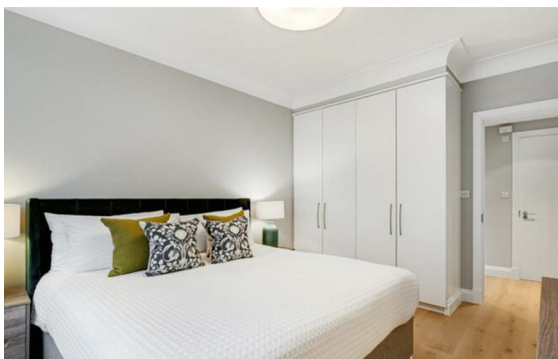


Hyde Park Place, Paddington, London, W2

Rent £1,450 Per Month

4 Bed | 3 Bath | 1 Reception

Please call us on 020 7724 2233 or email us info@newingtonstates.com to book a viewing.



Extraordinary four-bedroom apartment in this superb portered block overlooking Hyde Park just moments from Connaught Village and a short walk from Selfridges on Oxford Street. Comprising of four bedrooms, three bathrooms, extra large reception room with gorgeous furniture and fully fitted separated kitchen with ample storage and excellent appliances. Property further benefits from the high quality wooden flooring and 24H concierge service.

The property is excellently located for the Central Line - being only 0.2 miles away from Marble Arch Underground Station.

EPC rating: C

Energy Efficiency Rating: C

Agents Note: Whilst every care has been taken to prepare these particulars, they are for guidance purposes only. All measurements are approximate and are for general guidance purposes only and whilst every care has been taken to ensure their accuracy, they should not be relied upon and potential buyers/tenants are advised to recheck the measurements.

NEWINGTON
— ESTATES —

60 Upper Montagu Street

London

W1H 1SN

020 7724 2233

info@newingtonstates.com

<http://www.newingtonstates.com>