



RE/MAX

PROPERTY HUB



11 Millmans Road, Paignton, TQ3 1PE

Guide price £325,000

RE/MAX are delighted to bring to the market this beautifully presented and recently renovated two-bedroom semi-detached bungalow, situated in the highly sought-after village of Marldon. The property features a welcoming entrance hallway, a stylish open-plan lounge/dining area leading into a modern kitchen, two generously sized bedrooms, and a contemporary family bathroom. Outside, there are sunny, landscaped rear gardens, off-road parking, and a garage. Ideally located within easy reach of Marldon Primary School, local shops, the ring road, and scenic countryside walks.

ENTRANCE HALL

A uPVC double-glazed front door opens into a spacious and inviting hallway, providing access to all principal rooms. Features include a modern vertical column radiator, a cupboard housing the fuse box, loft access, and a thermostat control.

KITCHEN

A recently installed, stylish kitchen fitted with a range of wall, base, and drawer units complemented by roll-edged work surfaces. It includes a 1½ bowl composite sink with drainer, an integrated eye-level electric oven and grill, and a four-ring gas hob with extractor hood over. There is space and plumbing for a washing machine, dishwasher, and tumble dryer. Additional features include dual-aspect uPVC double-glazed windows, a contemporary vertical radiator, and tiled splashbacks.

LOUNGE / DINING ROOM

A bright and spacious open-plan living area, ideal for modern lifestyles and entertaining, flowing seamlessly into the kitchen. The room benefits from TV and internet points, a gas central heating radiator, and large uPVC double-glazed bi-fold doors opening onto the sunny, landscaped rear garden—perfect for indoor-outdoor living.

BEDROOM ONE

A generously sized main bedroom located at the front of the property, offering ample space for freestanding furniture. Includes a uPVC double-glazed window and gas central heating radiator.

BEDROOM TWO

A well-proportioned second bedroom, also positioned at the front, suitable as a guest room, nursery, or home office. Features a uPVC double-glazed window and gas central heating radiator.

FAMILY BATHROOM

A modern and stylish bathroom comprising a low-level WC, vanity wash hand basin with storage, and a panelled bath with overhead shower and glass screen. Finished with contemporary tiling, an obscure uPVC double-glazed window, a black heated towel rail, and a shaver point.

OUTSIDE

REAR GARDEN

A beautifully landscaped and low-maintenance rear garden featuring a generous sun deck—ideal for alfresco dining and relaxation—alongside a central lawned area and a timber-built summer house.

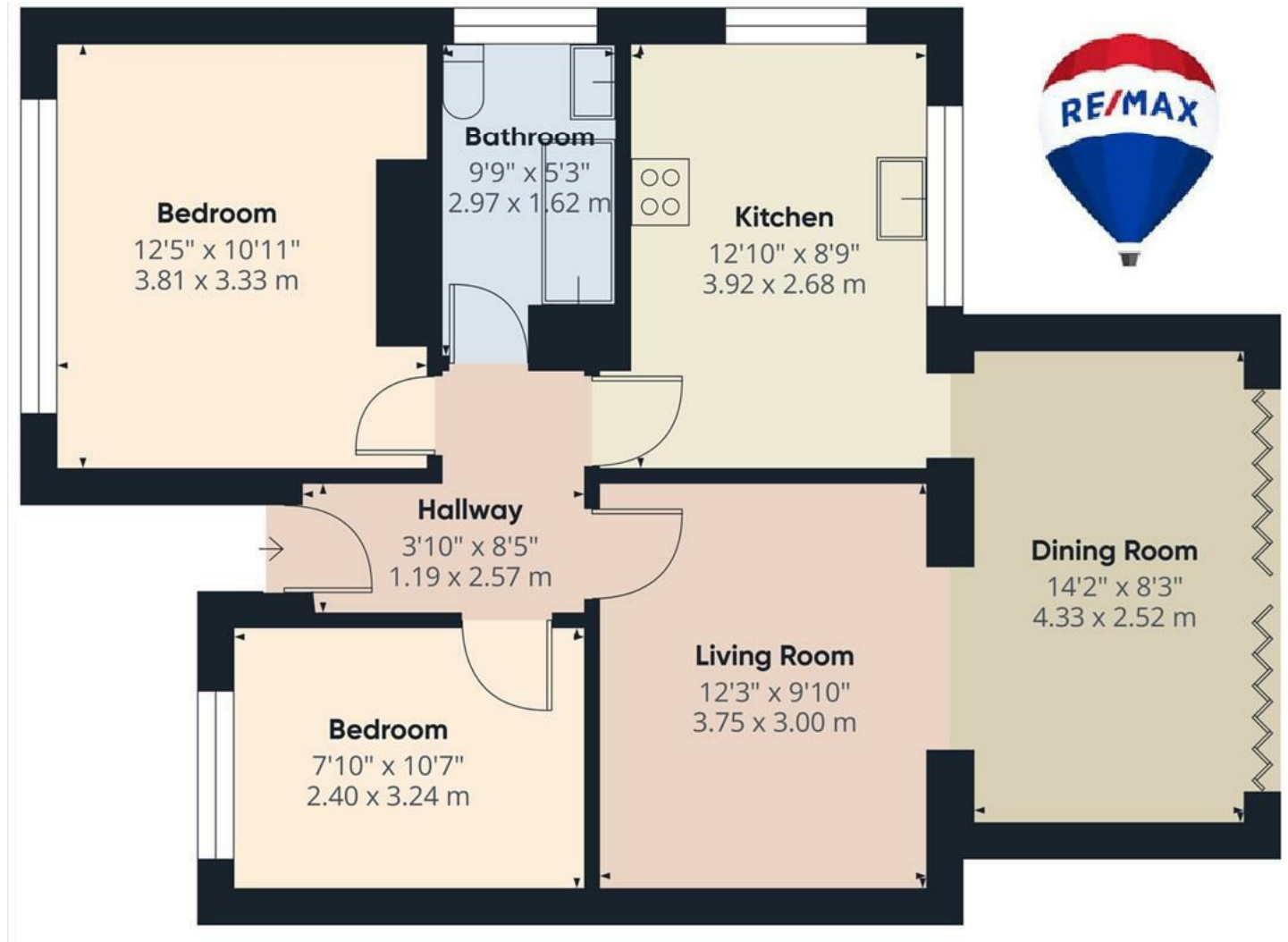
FRONT GARDEN

Provides off-road parking for multiple vehicles.

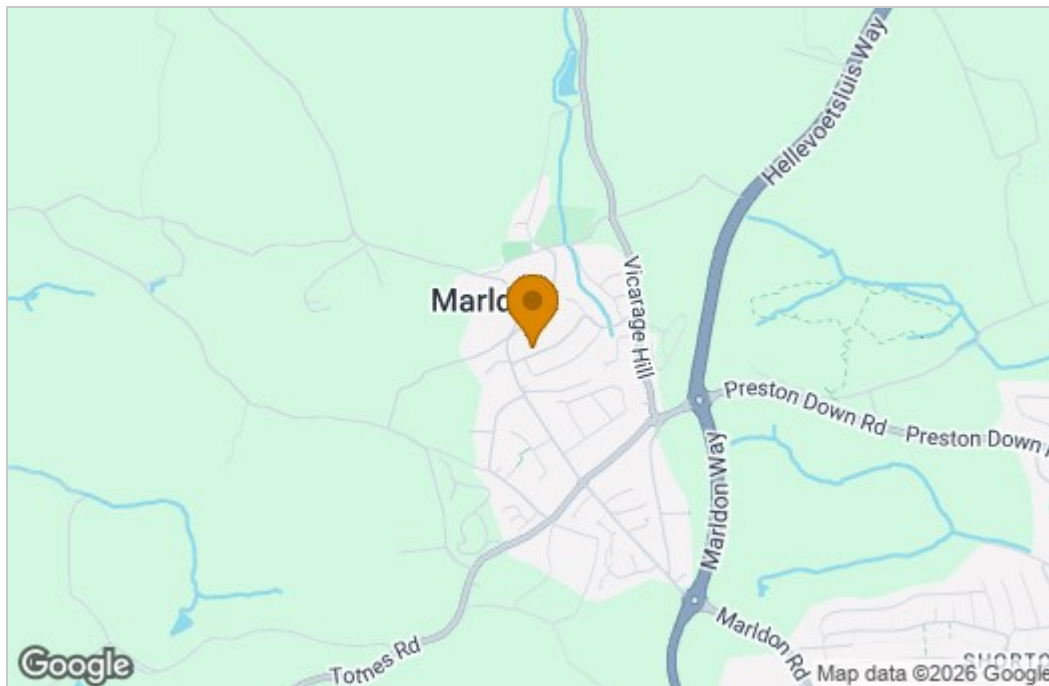
GARAGE

The property also benefits from a single garage with traditional wooden barn-style doors, offering excellent storage or hobby space.

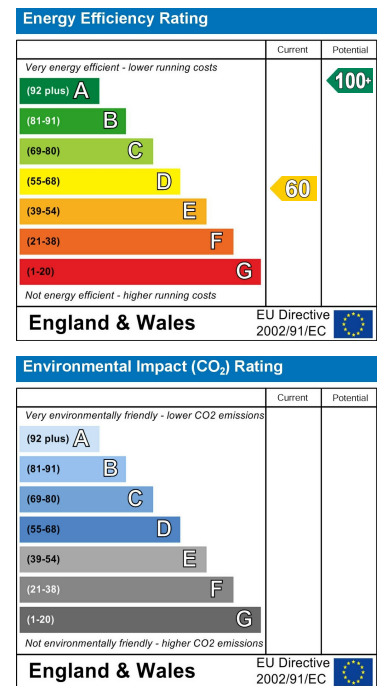
Floor Plan



Area Map



Energy Efficiency Graph



These particulars, whilst believed to be accurate are set out as a general outline only for guidance and do not constitute any part of an offer or contract. Intending purchasers should not rely on them as statements of representation of fact, but must satisfy themselves by inspection or otherwise as to their accuracy. No person in this firm's employment has the authority to make or give any representation or warranty in respect of the property.

2 Reynell Road, Newton Abbot, Devon, TQ12 6YA

Tel: 07850 038794 Email: ryan.flory@remax.uk <https://remax.uk/associates/Ryan%20Flory>