



Minley Grove, Fleet GU51 2RJ

£975 Per Month

Luff
ASSOCIATES
letting specialists



Minley Grove, Fleet. GU51 2RJ

£975 Per Month

- Ground floor apartment
- Living room
- Modern bathroom
- Close to Fleet mainline station
- One bedroom
- Modern kitchen
- Parking
- Unfurnished



Description

Luff Associates are proud to offer this well presented one bedroom, ground floor apartment located within walking distance of Fleet train station, as well as being close by to Fleet town centre with all local shops, restaurants and other amenities.

The accommodation offers a living room, bedroom with built-in wardrobe, modern kitchen and modern bathroom. The property also benefits from double-glazed windows and electric heating.

Outside there are communal grounds and an allocated parking space.

Unfurnished and available 20th August 2026

Council tax band: B

EPC rating: C

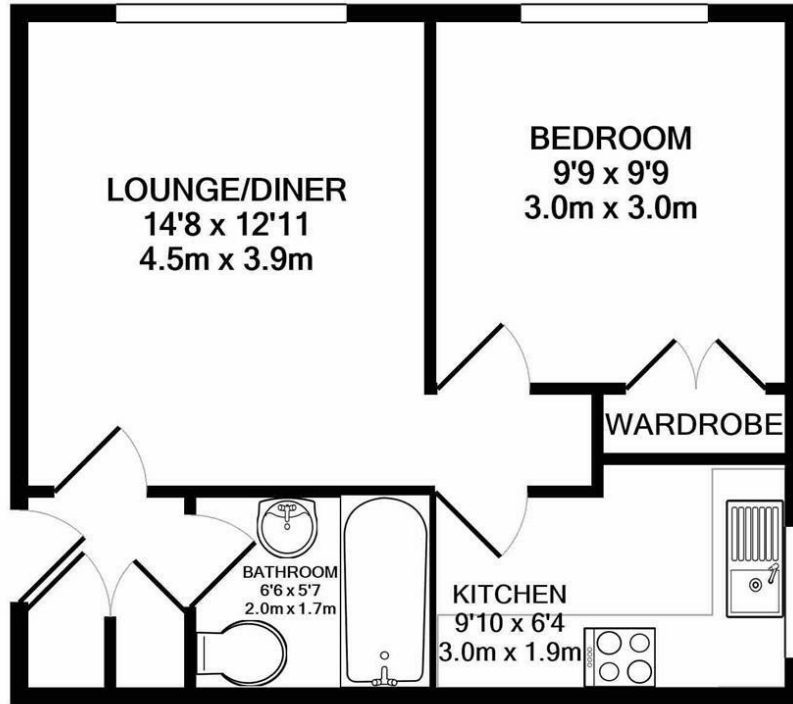
Deposit = 5 weeks rent - £1,125

First Months rent - £975

Holding deposit - £225 (will be deducted from the first months rent upon move in)



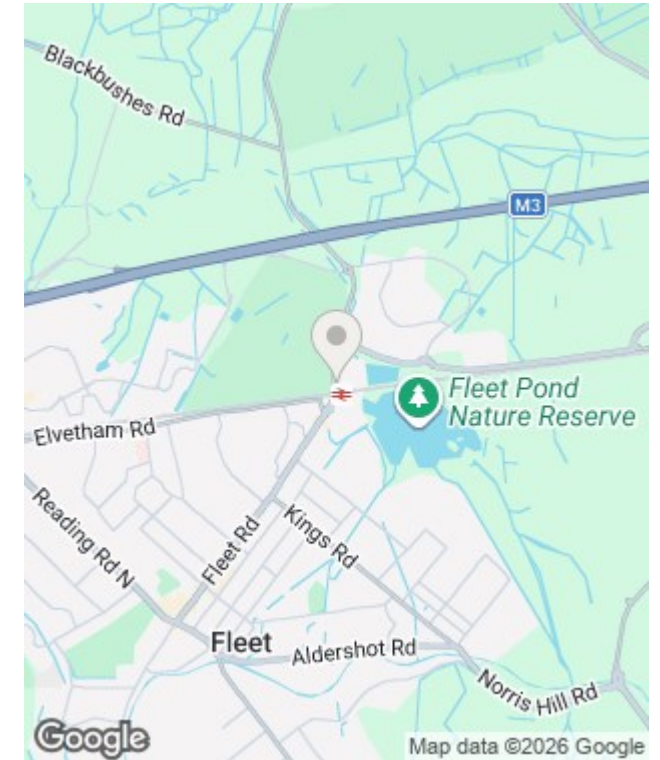
Floorplan



Whilst every attempt has been made to ensure the accuracy of the floor plan contained here, measurements of doors, windows, rooms and any other items are approximate and no responsibility is taken for any error, omission, or mis-statement. This plan is for illustrative purposes only and should be used as such by any prospective purchaser. The services, systems and appliances shown have not been tested and no guarantee as to their operability or efficiency can be given

Made with Metropix ©2021

Area Map



Energy Efficiency Rating		Environmental Impact (CO ₂) Rating	
	Current	Potential	
Very energy efficient - lower running costs			Very environmentally friendly - lower CO ₂ emissions
(92 plus) A			(92 plus) A
(81-91) B			(81-91) B
(69-80) C			(69-80) C
(55-68) D			(55-68) D
(39-54) E			(39-54) E
(21-38) F			(21-38) F
(1-20) G			(1-20) G
Not energy efficient - higher running costs			Not environmentally friendly - higher CO ₂ emissions
		73	79
England & Wales	EU Directive 2002/91/EC		England & Wales
	EU Directive 2002/91/EC		EU Directive 2002/91/EC



In partnership with
LUFF & WILKIN
sales 01252 838 899

Disclaimer: The Rent advertised does not include the Tenancy Deposit or any fee's or charges which are payable. Further information can be obtained from the agent or at the point of viewing. These details have been prepared and issued in good faith and do not constitute representations of fact or form part of any offer or contract Luff Associates Ltd have not carried out a structural survey of the property, nor have we tested any of the services or appliances. All measurements are intended to be approximate only and all photographs show parts of the property as they were at the time they were taken. Any reference to alterations or particular use of the property wherever stated, is not a statement that planning, building regulations or other relevant sent has been obtained