



Belsize Square

Belsize Park, NW3

Asking Price £1,695,000

A very well-presented garden flat measuring over 1480 square feet in a stucco fronted house and situated in a highly sought-after road within Belsize Park.

The accommodation comprises open-plan reception room and kitchen, main bedroom with en-suite shower room, two further bedrooms, bathroom and a utility space.

The mature and private garden is approximately 35 ft in length.

The property is offered to the market with no onward chain. Planning permission was previously granted to extend the property to the rear. Permit parking is available on the road.



Belsize Square

Belsize Park, NW3

- Lateral three bedroom garden flat
- Approximately 1400 square foot
- Private & mature garden
- Desirable road within Belsize Park
- Chain free
- Share of freehold and a 999 year lease
- 0.2 miles to Belsize Village
- 0.5 miles to the Jubilee Line
- 0.6 to the Northern Line



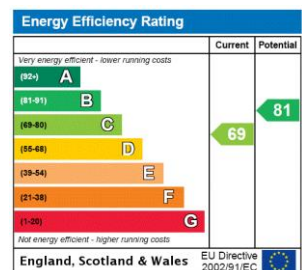
Tenure: Share of Freehold and a new lease with 999 years remaining.

Service Charge: £2,460 per annum

Ground Rent: £1 per annum

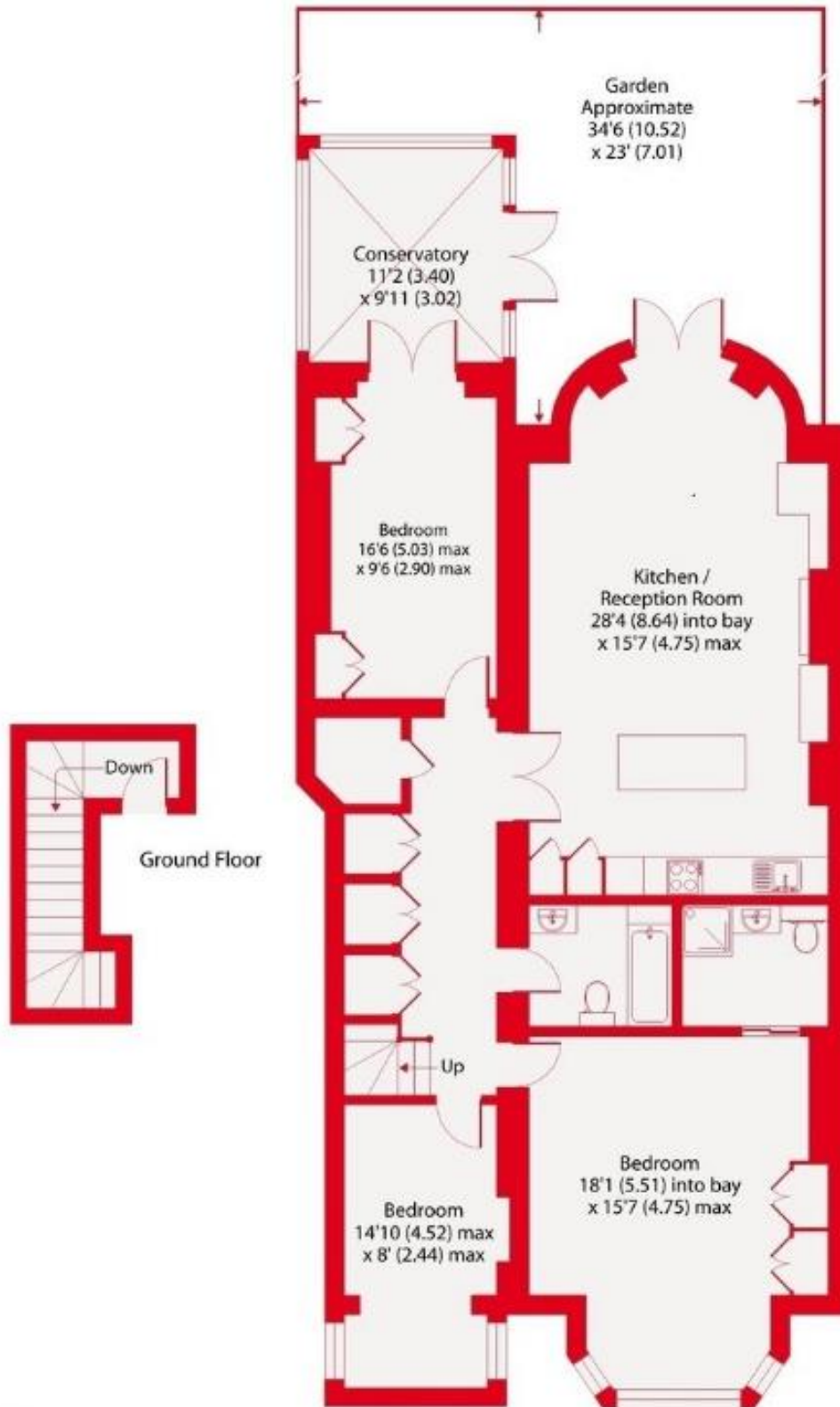
Local Authority: Camden

Council Tax Band: G



Chestertons Hampstead Sales

55-56 Hampstead High Street
Hampstead
NW3 1QH
hampstead@chestertons.co.uk
020 7794 3311
chestertons.co.uk



Belsize Square, NW3
Approximate Area = 1486 sq ft / 138.1 sq m
For identification only - Not to scale