



Maygrove Road, Kilburn NW6

London NW6

£425,000





## Maygrove Road

London NW6

Amazing raised ground floor apartment, chain free and long lease.

Council Tax band: TBD

Tenure: Leasehold

EPC Energy Efficiency Rating: C

EPC Environmental Impact Rating: C



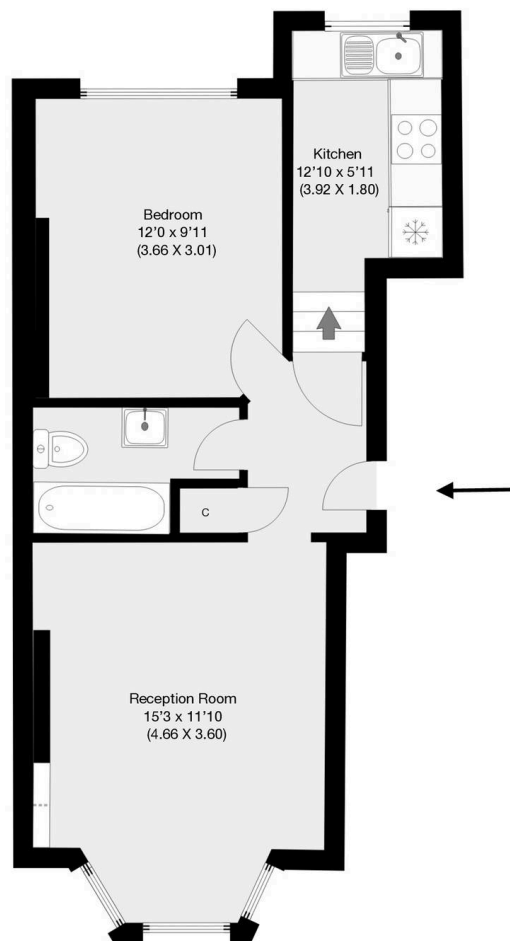






## Maygrove Road, London, NW6

Approximate Gross Internal Area 42 sqm / 452 sqft



Ground Floor

THIS FLOOR PLAN IS PRODUCED FOR GARRISON ESTATES SUBMITTED BY **ARCHIMEDIA** web: [www.archi-media.co.uk](http://www.archi-media.co.uk)

Whilst every attempt has been made to ensure the accuracy of the floor plan contained here, measurements of doors, windows and rooms are approximate and no responsibility is taken for any error, omission or misstatement. These plans are for representation purposes only and should be used as such by any prospective buyer or lease. Specifically no guarantee is given on the gross internal floor area of the property if quoted on this plan and any figures given is initial guidance only and should be treated as such.





## Garrison Estates

20 College Parade, Salusbury Road, Queens Park – NW6 6RN

020 4511 4820 • [contact@garrisonestates.co.uk](mailto:contact@garrisonestates.co.uk) • [www.garrisonestates.co.uk/](http://www.garrisonestates.co.uk/)