



Marlborough Road, Gillingham ME7 5HP

£1,195 Per Calendar Month

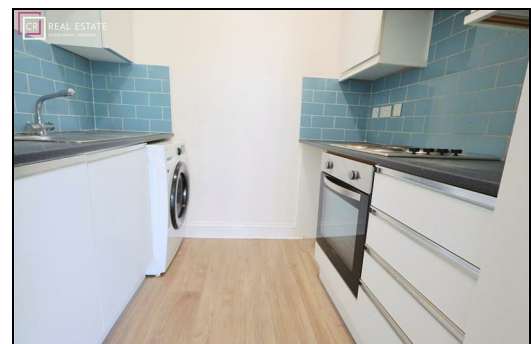
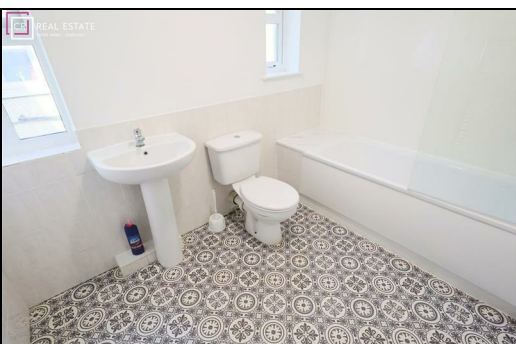
CR Real Estate are delighted to present this beautifully refurbished two-bedroom top floor flat, ideally positioned overlooking the popular Great Lines Heritage Park and conveniently located within easy reach of Medway Hospital, Gillingham town centre, and the mainline train station. This bright and airy property has been finished to a high standard throughout, offering a wonderful sense of space and natural light. The generous open-plan living area provides a welcoming environment, with the lounge leading onto a private enclosed balcony — the perfect spot to relax and take in the open views. The modern fitted kitchen is seamlessly integrated into the living space and comes complete with appliances, making it ideal for both everyday living and entertaining. The property further benefits from two well-proportioned bedrooms, along with a stylish contemporary bathroom.

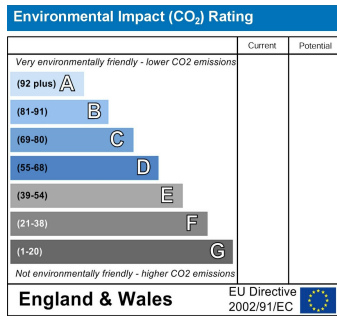
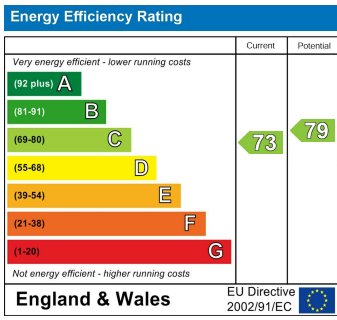
Perfectly suited for professional couples this home combines comfort, convenience and a desirable location.

CR Real Estate are part The Ombudsman Redress Scheme and are a member of the Propertymark Client Money Protection Scheme. Tenant deposits are protected by the Tenancy Deposit Scheme. For more information, please contact us.

Client Money Protection is provided by: Client Money Protect. Scheme Ref: CMP004209

Independent redress is provided by: The Property Ombudsman (TPO). Membership Number: E01687





ESTATE AGENCY : REDEFINED

