



Price

£125,000

Leasehold

1x  1x  1x 

Lakeside House,
Holmesdale Road, North
Holmwood, Dorking,
Surrey, RH5

OVER 60?

Secure this property
for up to **59% less!**

cubitt & west
Helping you move forwards



Main features

- Fantastic investment opportunity
- Great opportunity for first time buyer
- Allocated parking space
- Easy access to Dorking with its High Street and stations
- Integrated pull down bed
- Sought after village location
- Chain free

Accommodation

GROUND FLOOR

Entrance Hall

Lounge/Bedroom: 14'5 x 9'10
(4.40m x 3.00m)

Kitchen: 9'2 x 5'2 (2.80m x 1.58m)

Shower Room

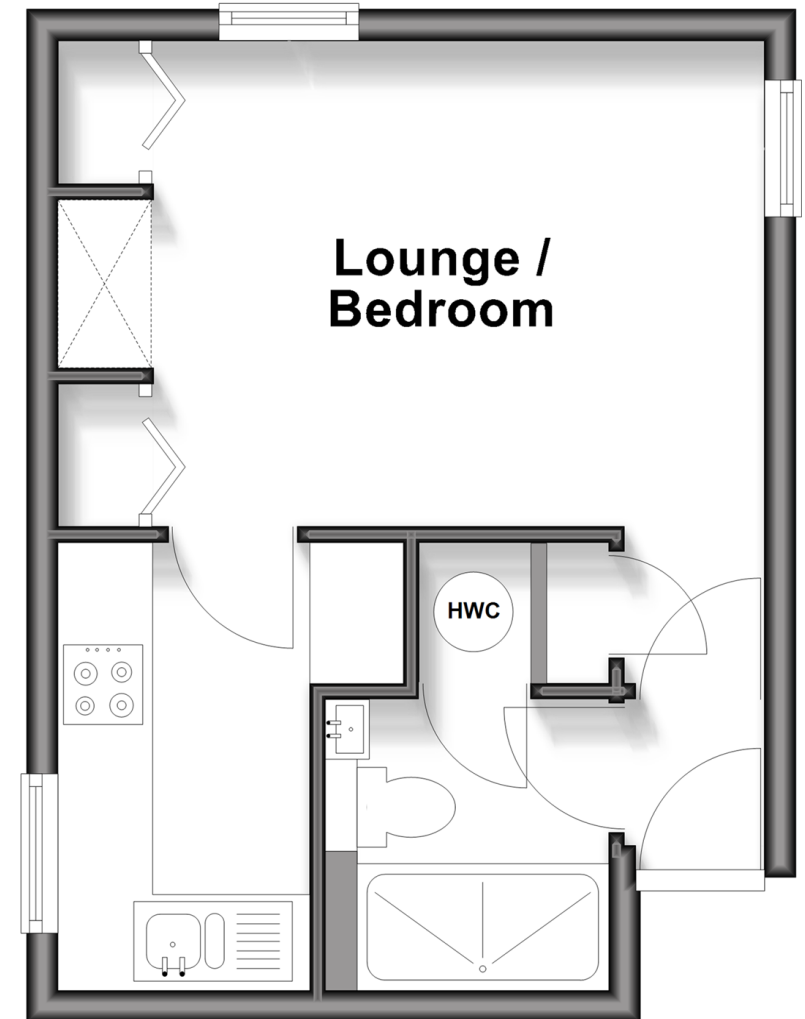
OUTSIDE

Communal Gardens

Allocated Parking

Ground Floor

Approx. 25.7 sq. metres (276.5 sq. feet)



Call Dorking - 01306 883399 ■ cubittandwest.co.uk

- Legal advice should be taken to verify fixtures/fittings, planning, alterations and/or lease details
- Appliances & services are untested, dimensions are approximate and floor plans are not to scale
- Through a Homewise Home For Life Plan people aged 60+ can secure this property for up to 59% less, by purchasing a Lifetime Lease



20511700/20260128/CFE/SB