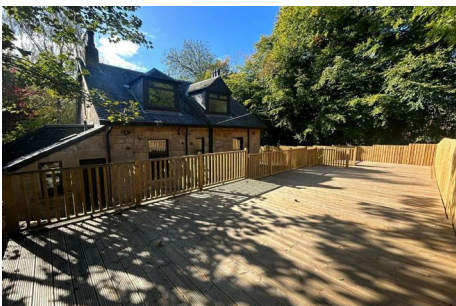


Manse Road, Glasgow, G61

£3,150 Per Calendar Month



- LOCATED CLOSE TO BEARSDEN CROSS
- EXCELLENT LOCAL AMENITIES
- PROPERTY HAS UNDERGONE FULL RENOVATION
- C 2000 SQ. FT COMPRISING SIX FULL APARTMENTS
- ATTACHED GARAGE AND EXTENSIVE ADDITIONAL OFF ROAD PARKING
- SUBSTANTIAL DECKED AREA TO REAR GARDEN
- EXCELLENT TRANSPORT INFRASTRUCTURE

Contact us for more details:
Tel: 0141 942 9090 Email: info@gsproperties.co.uk

Full listings online at <https://www.gsproperties.com>