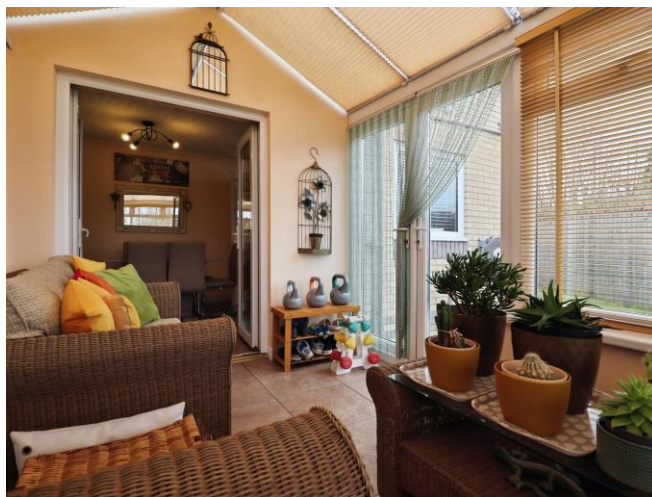




Swyn Y Nant, £280,000

- Three Bedroom Semi-Detached House
- Driveway & Garage
- Beautifully Presented Throughout
- Private Rear Garden
- Conservatory
- No Chain
- EPC Rating: C



 3  2  1



About the property

Discover your dream home in the heart of Thomastown with this stunning three-bedroom semi-detached house, perfectly designed for modern living. This property boasts a beautifully presented interior that exudes warmth and style, making it an inviting space for families and professionals alike. The spacious layout features contemporary decor throughout, ensuring that every corner of the home reflects a sense of elegance and comfort.

Step into the expansive living area, where natural light floods in, creating a bright and airy atmosphere. The highlight of this home is the charming conservatory at the rear, offering a serene space to relax or entertain while enjoying views of the garden. Each of the three generously sized bedrooms provides ample space for rest and relaxation, making it easy to unwind after a long day. With driveway parking available for multiple cars, convenience is at your fingertips, allowing for easy access and peace of mind.

Situated in a sought-after area, this property is ideally located near a variety of shops, schools, and essential amenities, making it perfect for families and individuals who value accessibility. Whether you're looking to enjoy local parks, vibrant community life, or simply the comfort of a well-appointed home, this semi-detached house in Thomastown is the perfect choice. Don't miss the opportunity to make this beautiful property your own—schedule a viewing today!

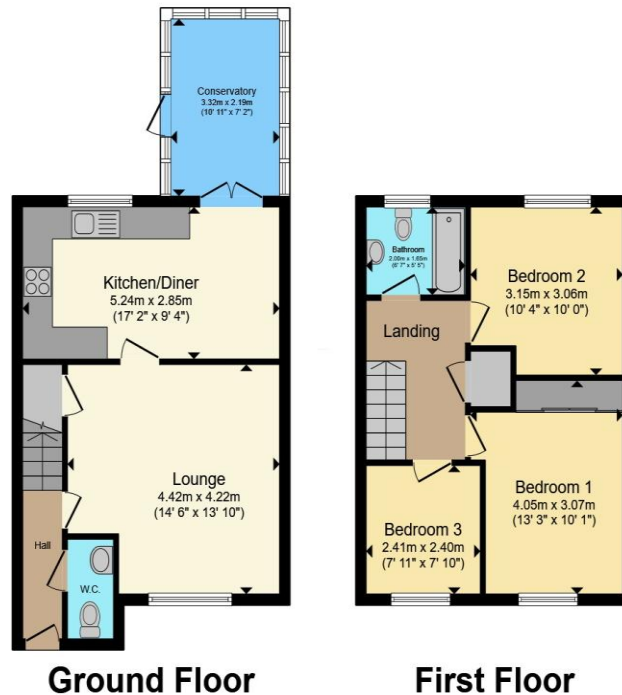


Accommodation

01443 222851

talbotgreen@peteralan.co.uk

Floorplan



Total floor area 84.2 m² (906 sq.ft.) approx

This floor plan is for illustrative purposes only. It is not drawn to scale. Any measurements, floor areas (including any total floor area), openings and orientation are approximate. No details are guaranteed, they cannot be relied upon for any purpose and they do not form part of any agreement. No liability is taken for any error, omission or misstatement. A party must rely upon its own inspection(s). Powered by www.propertybox.io



Important Information

Note while we endeavour to make our sales details accurate and reliable, if there is any point which is of particular interest to you, please contact the office and we will be pleased to confirm the position for you. We have not personally tested any apparatus, equipment, fixtures, fittings or services and cannot verify they are in working order or fit for their purposes. Nothing in these particulars is intended to indicate that carpets or curtains, furnishings or fittings, electrical goods (whether wired or not). Gas fires or light fittings or any other fixtures not expressly included form part of the property offered for sale. This computer generated Floorplan, if applicable, is intended as a general guide to the layout and design of the property. It is not to scale and should not be relied upon for dimensions. Tenure: We cannot confirm the tenure of the property as we have not had access to the legal documents. The buyer is advised to obtain verification from their solicitor or surveyor.

Peter Alan Limited is registered in England and Wales under company number 2073153, Registered Office is Cumbria House, 16-20 Hockliffe Street, Leighton Buzzard, Bedfordshire, LU7 1GN. VAT Registration Number is 500 2481 05. For activities relating to regulated mortgages and non-investment insurance contracts, Peter Alan Limited is an appointed representative of Connells Limited which is authorised and regulated by the Financial Conduct Authority. Connells Limited's Financial Services Register number is 302221. Most buy-to-let

