



Tranquil Vale  
London | Greater London | SE3 0BP

 FINE & COUNTRY

# Step inside

## Tranquil Vale

Occupying an outstanding elevated position overlooking the Heath towards the historic All Saints Church, this handsome double-fronted Victorian residence is one of the most distinctive homes in Blackheath.

The property has been sympathetically modernised in recent years and offers beautifully presented family accommodation arranged across four floors, combining elegant period character with contemporary finishes.

Original features remain throughout the home, including ornate cornicing, period fireplaces and an impressive staircase. The first floor provides three bright double bedrooms, two enjoying wonderful views across the Heath, along with two recently refurbished bathrooms including an en-suite.

The upper floor features a spectacular double-aspect room currently used as a family reception room, offering flexibility and potential to create two additional bedrooms if required.

On the ground floor the welcoming entrance hall leads to a study with bespoke shelving and Heath views, while the magnificent double-aspect reception room enjoys high ceilings and a beautiful fireplace.

The garden floor offers a newly installed bespoke kitchen and dining area, together with generous storage, a wine store and separate front access.

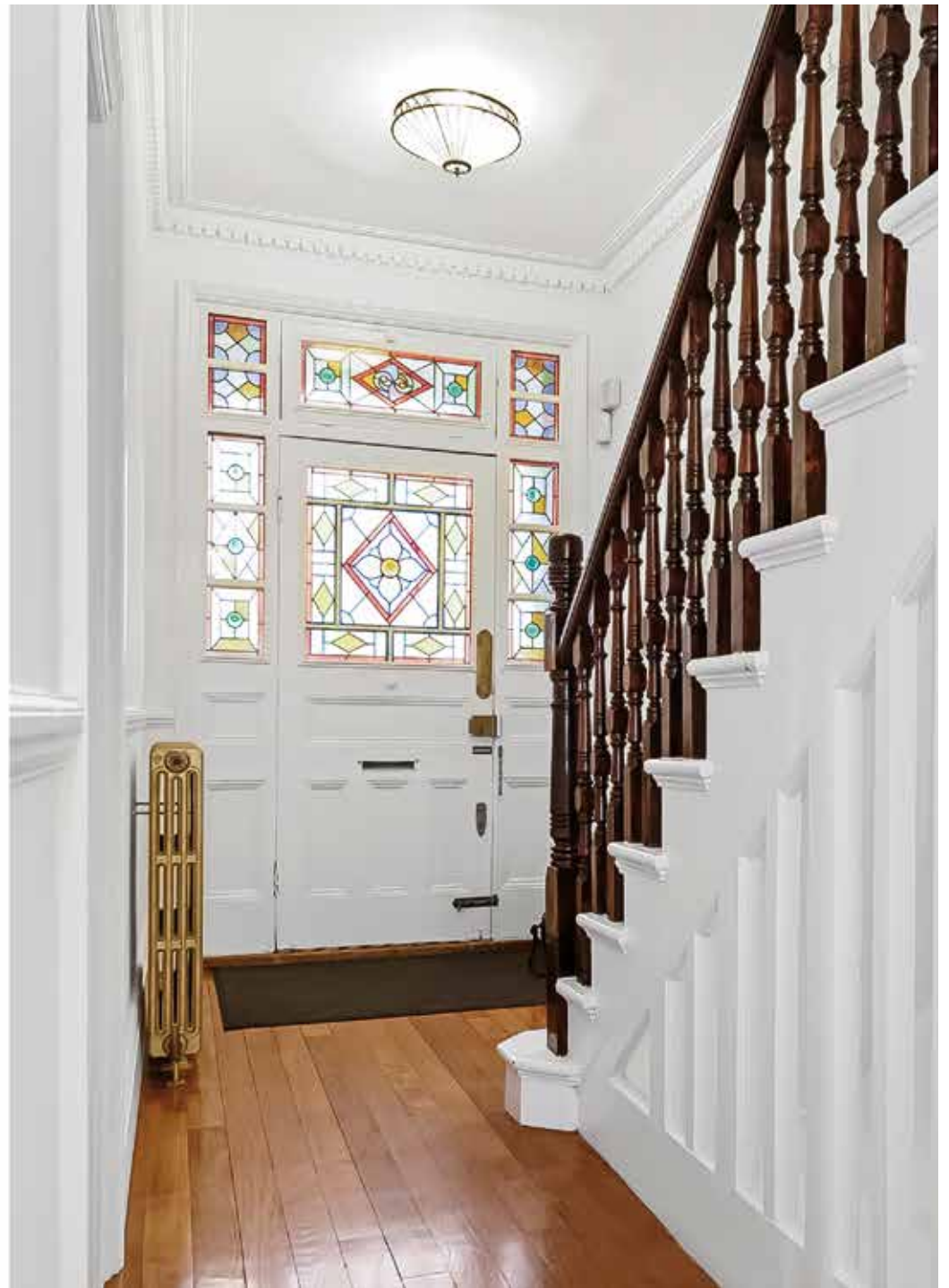
The attractive rear garden features a large terrace ideal for outdoor entertaining, mature Japanese-style planting and a useful garden room, with rear access onto Camden Row.

A rare opportunity to acquire a landmark Blackheath home combining exceptional views with immediate proximity to the centre of the village.

Set above the village with uninterrupted views across the Heath towards All Saints Church, this magnificent double-fronted Victorian home is widely regarded as one of the most distinguished houses in Blackheath. Beautifully modernised, it combines exceptional period architecture with elegant, spacious family living just moments from the village centre.



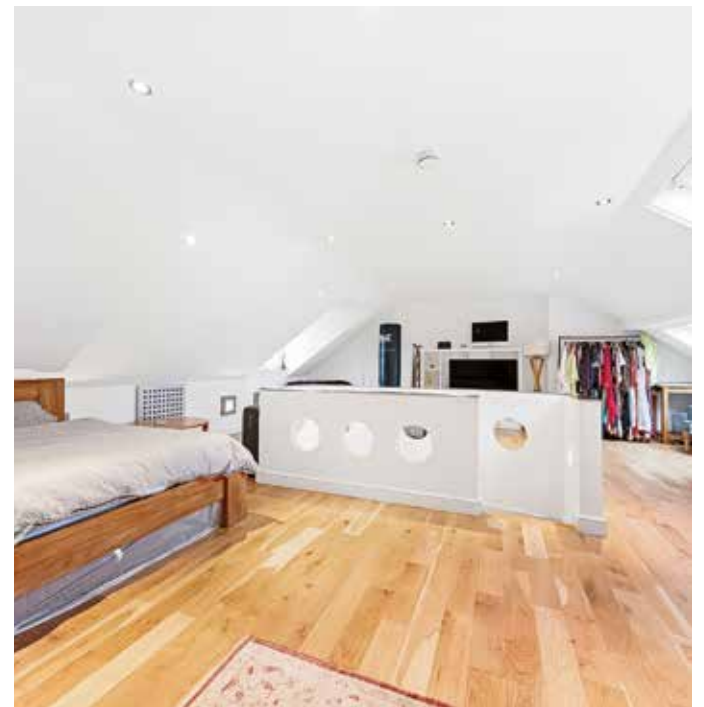
















# Tranquil Vale, SE3

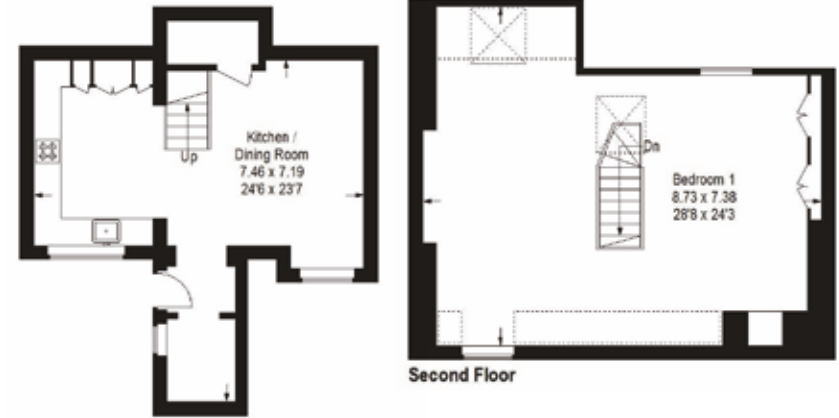
Approximate Gross Internal Area = 243.0 sq m / 2616 sq ft  
 Limited Use Area = 8.7 sq m / 94 sq ft  
 Outbuilding = 29.2 sq m / 314 sq ft  
 Total = 280.9 sq m / 3024 sq ft

= Reduced headroom below 1.5 m / 5'0"

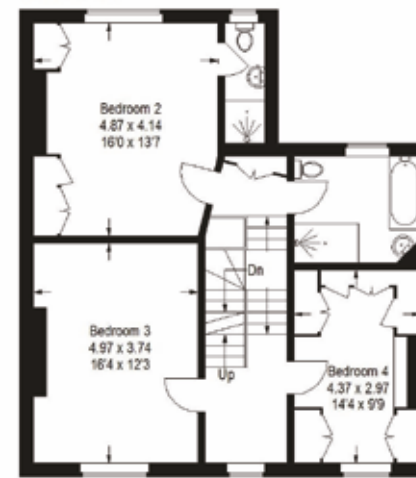


**Ground Floor**

This plan is for layout guidance only. Not drawn to scale unless stated. Windows and door openings are approximate. Whilst every care is taken in the preparation of this plan, please check all dimensions, shapes and compass bearings before making any decisions reliant upon them. (ID1283)

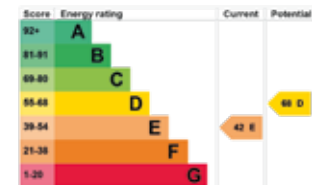


**Lower Ground Floor**



**First Floor**

Tenure: Freehold  
Council Tax Band: G



follow Fine & Country South East London on



Fine & Country South East London  
47b Great Guildford Street, London Bridge, London SE1 0ES  
Tel: +44 (0) 20 7635 2063 | southeastlondon@fineandcountry.com

