



Rochester Mews

Camden, NW1

Asking Price £2,200,000

Designed by renowned architect Peter Sherratt, this stunning four-bedroom mews house offers superb accommodation in a quiet, yet central location.

This truly unique mews house offers spacious living accommodation over three floors, each having a different feel. The ground floor comprises three double bedrooms and a bathroom. The first floor comprises an open plan living area with reception, kitchen and dining area with access to a southerly facing roof terrace. The entire top floor is the master bedroom with en suite bathroom and dressing area. The clever use of skylights and windows make this house exceptionally bright and airy, with different open views, yet still remarkably private.

CHESTERTONS



Rochester Mews

Camden, NW1

- Architecturally Designed
- Mews House
- Four Bedrooms
- Roof Terrace
- Excellent Location



Situated in the Rochester conservation area, Rochester Mews is a desirable location and quietly tucked away on a cobbled street. The area boasts excellent transport links and a fantastic array of shops and restaurants. In catchment for the outstanding Camden school for Girls and in close proximity to Kings Cross.

Tenure: Freehold

Service Charge: N/A

Ground Rent: N/A

Local Authority: London Borough Of Camden

Council Tax Band: G

Score	Energy rating	Current	Potential
92+	A		
81-91	B		
69-80	C		
55-68	D		
39-54	E		
21-38	F		
1-20	G		
		71 C	80 C

Chestertons Camden & Kentish Town Sales

99-101 Parkway

Camden

London

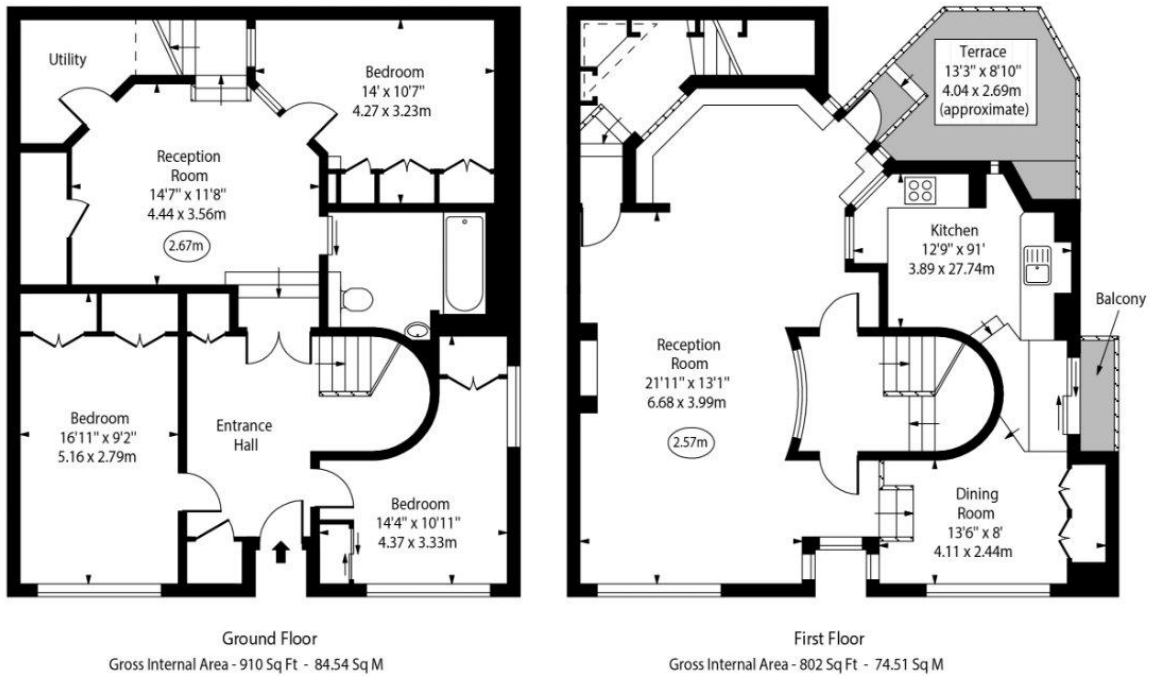
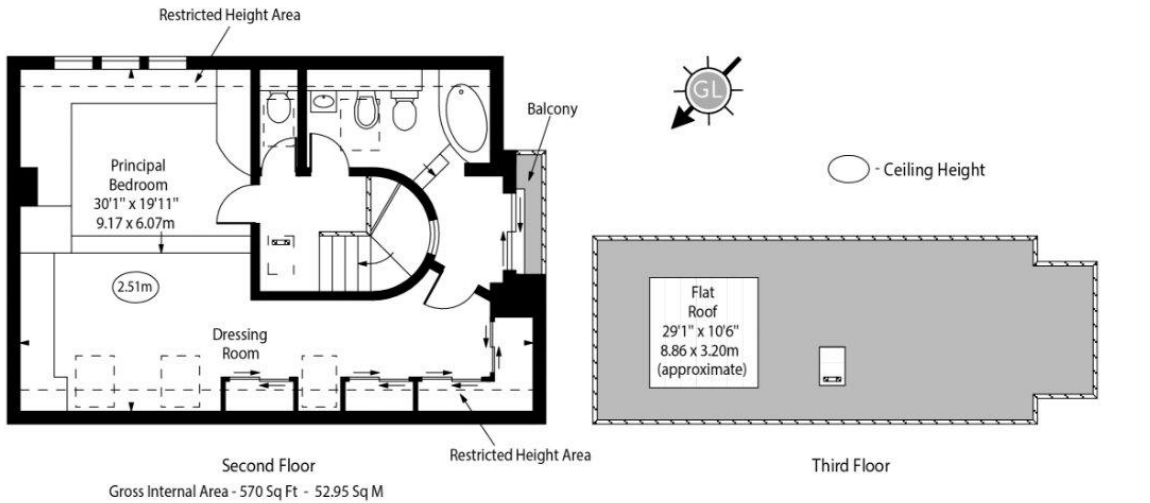
NW1 7PP

camden@chestertons.co.uk

020 7267 2053

chestertons.co.uk

Rochester Mews



Approx Gross Internal Area 2218 Sq Ft - 206.05 Sq M
Approx. Floor Area Including Restricted Heights 2282 Sq Ft - 212.00 Sq M
 (Excluding Flat Roof)

Every attempt has been made to ensure the accuracy of the floor plan shown.
 However, all measurements, fixtures, fittings, and data shown are approximate interpretations and
 for illustrative purposes only. Measured according to the RICS. Not To Scale.
www.goldlens.co.uk
 Ref. No. 032109K