

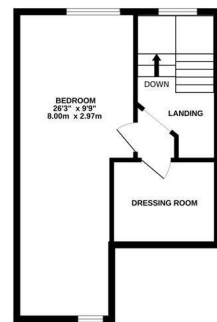
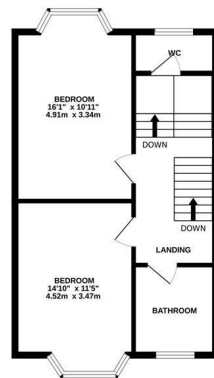
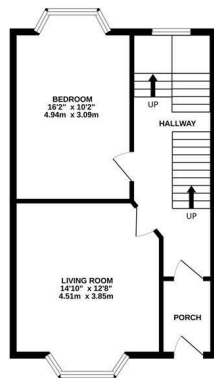
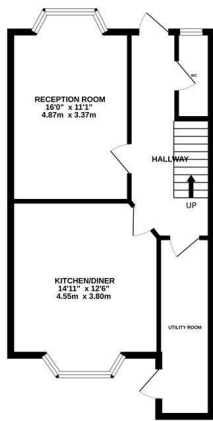


Milward Road, Hastings TN34 3RS

Offers in excess of £500,000



An attractive FOUR STOREY Victorian terraced house, ideally positioned just a short stroll from the beach, HASTINGS TOWN CENTRE with its mainline railway station and Hastings Old Town which offers a collection of artisan shops, antique stores and traditional pubs. The versatile accommodation enjoys GRAND PROPORTIONS and retains an ABUNDANCE OF ORIGINAL FEATURES, including original floorboards, high ceilings and feature fireplaces. You enter through a stained glass door on to the ground floor where there is a cosy bay fronted living room fitted with a WOOD-BURNING STOVE and bespoke shutters, there is also a double bedroom on this level measuring 16'2 x 10'2 with a gorgeous feature fireplace and a bay window enjoying a rear aspect. The charming kitchen sits on the lower level and offers plenty of space for a table with a separate reception room looking out to the WELL TENDED REAR GARDEN, there is also handy utility room and a downstairs cloakroom. Two further double bedrooms span the first floor along with a cloakroom on the half landing and a family bathroom. The upper floor houses a large bedroom with a SEPARATE DRESSING ROOM/storage area which would make the perfect en-suite. Externally there is an idyllic patio providing the perfect spot to dine al-fresco, followed by an expanse of lawn. Boasting FAR REACHING VIEWS across Hastings to the sea this fantastic property is not to be missed.



TOTAL FLOOR AREA: 1894 sq.ft. (175.9 sq.m.) approx.

Whilst every attempt has been made to ensure the accuracy of the floorplan contained here, measurements of doors, windows, rooms and any other items are approximate and no responsibility is taken for any error, omission or mis-statement. This plan is for illustrative purposes only and should be used as such by any prospective purchaser. The services, systems and appliances shown have not been tested and no guarantee as to their operability or efficiency can be given.
Made with Metropix ©2026

