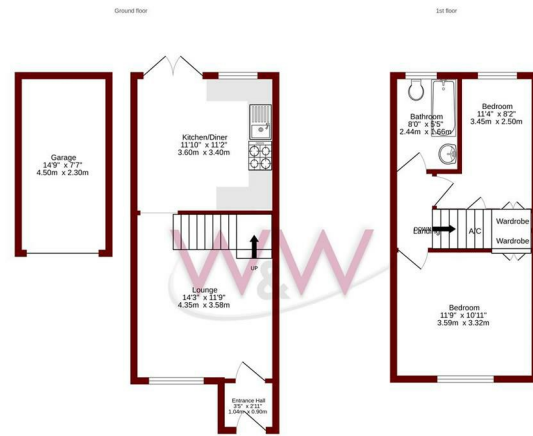




Ryecroft | | Titchfield Common | PO14 4PZ

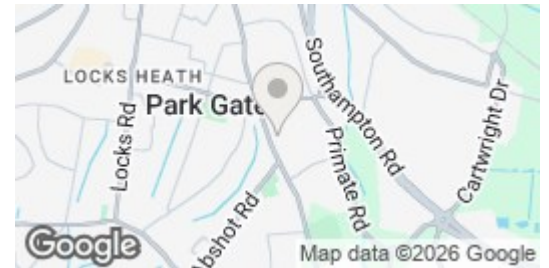
£1,350 Per Month





We warrant every effort has been made to ensure the accuracy of the foregoing particulars, but we do not warrant the accuracy of the same. We warrant that the particulars are true and correct to the best of our knowledge and belief at the time of the preparation of the particulars. The particulars, however, are not intended to constitute an offer of any financial product and are not intended to be used for any other purpose. The particulars, however, are not intended to constitute an offer of any financial product and are not intended to be used for any other purpose. The particulars, however, are not intended to constitute an offer of any financial product and are not intended to be used for any other purpose.

Energy Efficiency Rating		Current	Potential
Very energy efficient - lower running costs			
(92 plus)	A		89
(81-91)	B		
(69-80)	C		
(55-68)	D	56	
(39-54)	E		
(21-38)	F		
(1-20)	G		
Not energy efficient - higher running costs			
England & Wales		EU Directive 2002/91/EC	



Description

W&W are pleased to offer for rent this two bedroom end terraced home offered. The property boasts two bedrooms, lounge/dining room, kitchen & main bathroom. The property also benefits from a rear garden & allocated parking and a garage.

Ryecroft is a quiet cul de sac situated just 5 minutes walk to the local convenience store, also within walking distance is St Johns CofE School. Further amenities can be found at Park Gate & Locks Heath which are easily accessible.

Key features



H3 Whiteley Shopping Centre
 Whiteley Way
 Whiteley
 Hants
 PO15 7PD
 01489 580800
 pm@walkerwaterer.co.uk
 www.walkerwaterer.co.uk