



Monks Park, HA9

£1,039 Per week

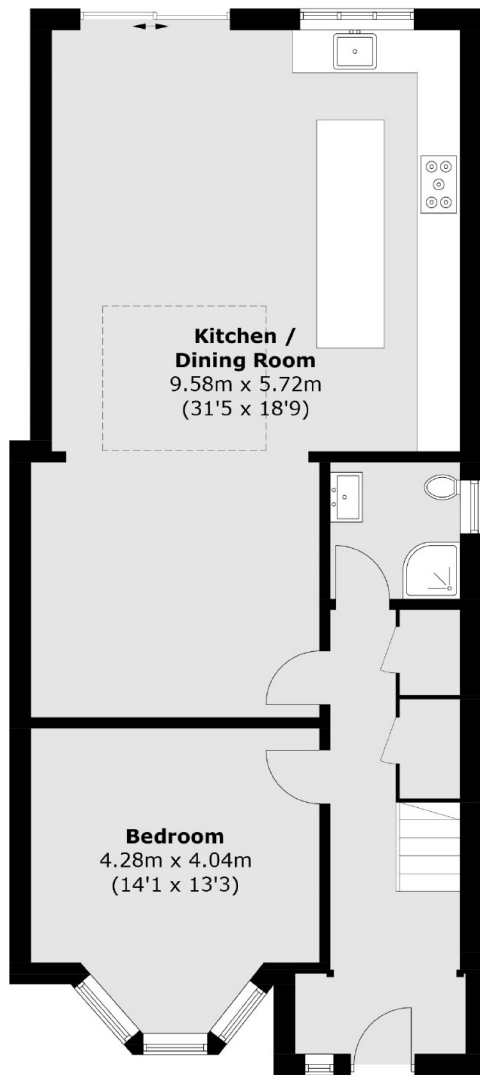
This stunning semi-detached five bedroom house offers generous living space across three floors. It features a spacious open-plan reception room and an island kitchen, ideal for cooking and entertaining. The property also boasts a large back garden and off-street parking.

Monks Park is ideally situated with Wembley Park and Wembley Stadium nearby with excellent transport connections. There is also an impressive selection of shopping outlets, providing a vibrant atmosphere.

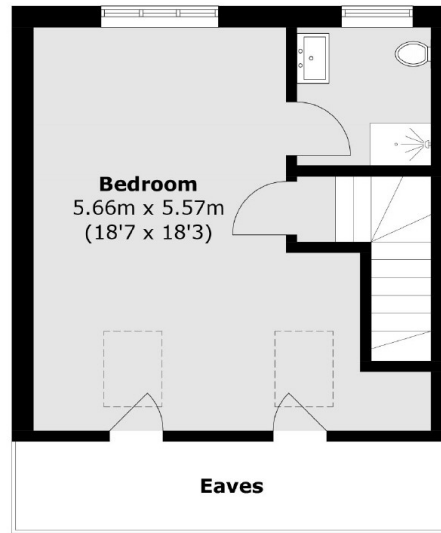
Features

- Semi-detached
- Off-street Parking
- Private Rear Garden
- Island Kitchen
- Five Bedrooms
- Three Bathrooms

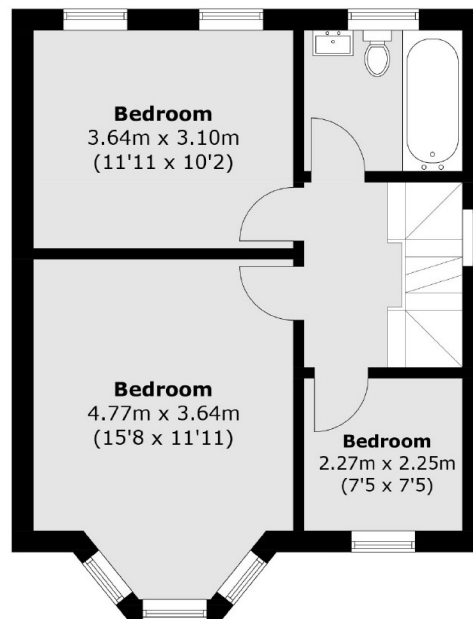
Monks Park, Wembley, HA9



Ground Floor



Second Floor



First Floor

Total area (approx.): 157.5 sq. m (1,695.2 sq. ft)
(Excluding Eaves)