

Howard Morley
& Sons



PCM

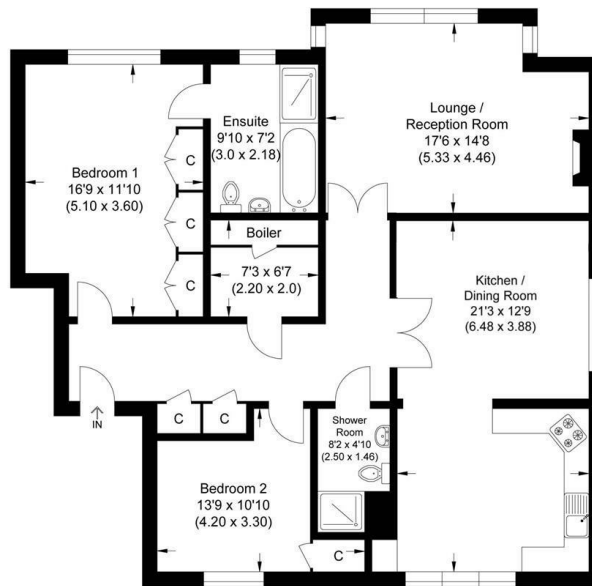
£1,700 PCM

Annesley House

Guildford, GU2 9AF



Approximate Gross Internal Area
108.69 sq m / 1169.92 sq ft




Ground Floor

Illustration for identification purposes only, measurements are approximate, not to scale.

2 | 

2 | 

2 | 

| Energy Efficiency Rating | | Current | Potential |
|---|--|---|-----------|
| Very energy efficient - lower running costs | | | |
| (92 plus) A | | | |
| (81-91) B | | | |
| (69-80) C | | 79 | 80 |
| (55-68) D | | | |
| (39-54) E | | | |
| (21-38) F | | | |
| (1-20) G | | | |
| Not energy efficient - higher running costs | | | |
| England & Wales | | EU Directive 2002/91/EC  | |

Agents Note: Whilst every care has been taken to prepare these particulars, they are for guidance purposes only. All measurements are approximate and are for general guidance purposes only and whilst every care has been taken to ensure their accuracy, they should not be relied upon and potential buyers/tenants are advised to recheck the measurements

Howard Morley
& Sons

OFFICE ADDRESS
276 High Street
Guildford
Surrey
GU1 3JL

OFFICE DETAILS
01483 575 304
lettings@hmorley.co.uk
hmorley.co.uk